

I. EARTH CURRENTS

In the present report of the Observatory, six kinds of tables are published in the section earth currents.

The coordinates of the Observatory are:

$$\varphi \ 47^{\circ}38' \quad \lambda \ 16^{\circ}43'$$

$$\Phi \ 47,2^{\circ} \quad \wedge \ 98,3^{\circ}$$

All times are given in this part in CET (i. e. GMT + 1 h), nearly (-7 min) corresponding to LT.

The tables published are the following:

1. The activity indices T of the general activity for each three hour interval of the local day, as well as the character figures of single frequency bands for whole days K_1-K_5 .

The T-scale is linear; its scale corresponds to 1,8 mV/km. The monthly mean T-values are separately given for the North-South and East-West components. The scales for K_1-K_5 are as follows:

| Frequency band | limits between K-values | | | | | | | | |
|---------------------|-------------------------|-----|-----|-----|-----|-----|-----|-----|-----|
| | 0—1 | 1—2 | 2—3 | 3—4 | 4—5 | 5—6 | 6—7 | 7—8 | 8—9 |
| 1. Period 0— 2 min | 2 | 4 | 7 | 13 | 18 | 23 | 29 | 41 | 54 |
| 2. Period 2— 6 min | 9 | 13 | 18 | 23 | 29 | 34 | 41 | 56 | 90 |
| 3. Period 6—12 min | 16 | 22 | 25 | 32 | 38 | 45 | 56 | 83 | 120 |
| 4. Period 12—24 min | 34 | 43 | 54 | 70 | 85 | 101 | 124 | 151 | 202 |
| 5. Period 24—60 min | 29 | 43 | 67 | 88 | 110 | 131 | 191 | 234 | 339 |

All these values are given in the table in units of 10^{-5} V/km.

Values in brackets mean extrapolated ones from incomplete material, where the lacking hours have been substituted by the average of recorded hours.

II. Monthly and yearly means, and means for disturbed and quiet days of the amplitudes of the former frequency bands and of the earth current field intensity. D and Q days are the same as in section Geomagnetism. The rows 1–5 contain the average amplitudes of the five bands in 10^{-5} V/km. Row 6 contains the hourly means of the earth current field intensity, corrected for long period variations (equally in 10^{-5} V/km).

III. Results of harmonical analysis from monthly means of the earth current field intensity.

IV. Time of special events (common table from magnetic and earth current records).

V. Results of rapid-run recording on world days. The figures show the daily frequency distribution of periods 2; 6; 10; 15; 20; 30; 40 sec and 1; 1,5; 2,5 min, the mean amplitudes in the bands 0–1 and 1–2 min, and the estimated spectra for each two month period on world days. In the yearly average the spectra for each three-hour period of the day are given, too. The frequencies are expressed in per mille, the amplitudes in 10^{-6} V/km. For details of the processing see J. VERŐ: Die abgeänderte Methode zur Bearbeitung der tellurischen Schnellregistrierungen, von 1960 an, im Observatorium bei Nagycenk (Acta Technica Hung. 1963. T. 43. 101.)

VI. Micropulsation indices for the years 1966–1971. The indices have been determined from the occurrence frequency of different period micropulsations, striving at a possibly uniform distribution of days in each of the five possible indices (1–5).

The determination of these indices can be shortly explained as follows: The days are arranged according to the occurrence frequency of each band. Index 1 is attributed to the days with lowest fifth of occurrence frequencies (0 to 20 per cent), index 2 to days with occurrence frequencies in the second lowest fifth (20 to 40 per cent) etc., index 5 to days with highest occurrence frequencies (80 to 100 per cent of days). G indicates days when the indices have been determined from 20 mm/min records, on all other days from 6 mm/min

records. It must be reminded that mainly in the lowest and highest bands the uniform distribution could not be achieved due to insufficient occurrence of these bands on the records.

The bands are the following:

| | | | |
|-----|----|----|---------|
| P1 | 0 | to | 5 sec |
| P2 | 5 | to | 10 sec |
| P3 | 10 | to | 15 sec |
| P4 | 15 | to | 20 sec |
| P5 | 20 | to | 25 sec |
| P6 | 25 | to | 30 sec |
| P7 | 30 | to | 40 sec |
| P8 | 40 | to | 60 sec |
| P9 | 60 | to | 90 sec |
| P10 | 90 | to | 120 sec |
| P11 | 2 | to | 5 min |
| P12 | 5 | to | 10 min |

For a detailed description of the method of determination of these indices, see: L. HOLLÓ, M. TATRALLYAY and J. VERŐ. Experimental results with the characterization of geomagnetic micropulsations (*Acta Geodaetica, Geophysica et Montanistica Hungarica*, 1972.)

Mrs. J. CZUCZOR, L. HOLLÓ, M. TATRALLYAY and J. VERŐ took part in the processing and compilation of the data.

Records were taken in the Observatory with three instruments of the types GMG T9/1956 and GMG T/14 1961, with small modifications in order to meet the demands of the use in the observatory. A general description of the processing and compilation is found in the report of the Observatory from 1966, in German by A. ÁDÁM, J. VERŐ, A. WALLNER: *Tellurische und erdmagnetische Messungen im Observatorium bei Nagycenk. Observatoriumsberichte des Geophysikalischen Forschungslaboratoriums der Ungarischen Akademie der Wissenschaften vom Jahre 1966, Sopron, 1967.*

I.

Activity indices T and K₁—K₅

January

| Day | T | Sum | K ₁ | K ₂ | K ₃ | K ₄ | K ₅ |
|-----|----------|-----|----------------|----------------|----------------|----------------|----------------|
| 1. | 21110130 | 9 | 5 | 1 | 4 | 2 | 1 |
| 2. | 22444532 | 26 | 7 | 3 | 4 | 3 | 2 |
| 3. | 44457894 | 45 | 7 | 4 | 4 | 3 | 7 |
| 4. | 52353332 | 26 | 6 | 3 | 5 | 1 | 5 |
| 5. | 21232231 | 16 | 5 | 1 | 5 | 2 | 1 |
| 6. | 21111110 | 8 | 3 | 0 | 4 | 1 | 0 |
| 7. | 00011000 | 2 | 3 | 0 | 3 | 0 | 0 |
| 8. | 00001010 | 2 | 4 | 1 | 4 | 0 | 0 |
| 9. | 00000010 | 1 | 3 | 0 | 4 | 0 | 0 |
| 10. | 10011052 | 10 | 3 | 1 | 4 | 1 | 2 |
| 11. | 11111410 | 10 | 4 | 1 | 3 | 1 | 2 |
| 12. | 20001100 | 4 | 3 | 1 | 4 | 0 | 0 |
| 13. | 01114202 | 11 | 4 | 1 | 5 | 3 | 1 |
| 14. | 11112101 | 8 | 0 | 0 | 4 | 2 | 1 |
| 15. | 11121102 | 9 | 2 | 0 | 4 | 1 | 1 |
| 16. | 20022103 | 10 | 3 | 1 | 4 | 1 | 1 |
| 17. | 00111102 | 6 | 3 | 1 | 4 | 1 | 0 |
| 18. | 21134533 | 22 | 6 | 2 | 5 | 3 | 2 |
| 19. | 21222244 | 19 | 7 | 3 | 5 | 2 | 3 |
| 20. | 43664443 | 34 | 5 | 3 | 5 | 3 | 5 |
| 21. | 32323322 | 18 | 5 | 2 | 4 | 2 | 2 |
| 22. | 21111013 | 10 | 4 | 0 | 4 | 3 | 0 |
| 23. | 31110121 | 10 | 4 | 0 | 4 | 2 | 1 |
| 24. | 11112024 | 12 | 4 | 0 | 4 | 2 | 1 |
| 25. | 32111120 | 11 | 4 | 0 | 4 | 3 | 2 |
| 26. | 00000000 | 0 | 3 | 0 | 4 | 0 | 0 |
| 27. | 19855574 | 44 | 5 | 4 | 6 | 6 | 5 |
| 28. | 33232989 | 39 | 4 | 1 | 4 | 6 | 6 |
| 29. | 53123222 | 20 | 4 | 0 | 4 | 3 | 5 |
| 30. | 35653227 | 33 | 7 | 4 | 5 | 5 | 4 |
| 31. | 31333253 | 23 | 7 | 3 | 5 | 3 | 4 |

Monthly averages: T (N) 1,911
T (E) 1,468
K₁ 4,26
K₂ 1,32
K₃ 4,26
K₄ 2,10
K₅ 2,06

February

| Day | T | Sum | K ₁ | K ₂ | K ₃ | K ₄ | K ₅ |
|-----|----------|-----|----------------|----------------|----------------|----------------|----------------|
| 1. | 23142921 | 24 | 6 | 3 | 4 | 4 | 2 |
| 2. | 22023242 | 17 | 6 | 2 | 4 | 2 | 2 |
| 3. | 21111000 | 6 | 5 | 1 | 4 | 0 | 1 |
| 4. | 00011020 | 4 | 3 | 0 | 4 | 1 | 1 |
| 5. | 11011001 | 5 | 3 | 1 | 4 | 1 | 1 |
| 6. | 20112011 | 8 | 2 | 0 | 4 | 3 | 1 |
| 7. | 02110112 | 8 | 5 | 2 | 4 | 2 | 2 |
| 8. | 41133113 | 18 | 7 | 4 | 5 | 4 | 3 |
| 9. | 22124200 | 13 | 5 | 2 | 5 | 3 | 2 |
| 10. | 21123414 | 18 | 6 | 2 | 5 | 2 | 3 |
| 11. | 10031112 | 9 | 3 | 1 | 5 | 2 | 1 |
| 12. | 11122322 | 14 | 4 | 1 | 4 | 3 | 2 |
| 13. | 21111000 | 6 | 6 | 1 | 4 | 1 | 1 |
| 14. | 01244452 | 22 | 5 | 3 | 5 | 3 | 3 |
| 15. | 43335599 | 41 | 7 | 3 | 5 | 5 | 6 |
| 16. | 84434535 | 36 | 7 | 4 | 5 | 3 | 6 |
| 17. | 32233211 | 17 | 6 | 3 | 5 | 4 | 2 |
| 18. | 22222132 | 16 | 4 | 2 | 4 | 3 | 0 |
| 19. | 22121111 | 11 | 4 | 1 | 2 | 2 | 0 |
| 20. | 02132142 | 15 | 6 | 2 | 5 | 3 | 1 |
| 21. | 11111210 | 8 | 2 | 0 | 4 | 1 | 1 |
| 22. | 10010000 | 2 | 3 | 0 | 3 | 0 | 0 |
| 23. | 00112156 | 16 | 6 | 3 | 5 | 2 | 3 |
| 24. | 50223229 | 25 | 6 | 3 | 5 | 3 | 2 |
| 25. | 73335789 | 45 | 7 | 4 | 6 | 3 | 7 |
| 26. | 59444322 | 33 | 7 | 3 | 6 | 4 | 4 |
| 27. | 51114222 | 18 | 7 | 3 | 4 | 2 | 3 |
| 28. | 12111100 | 7 | 3 | 0 | 4 | 2 | 0 |

Monthly averages:

| | |
|----------------|-------|
| T (N) | 2,009 |
| T (E) | 1,353 |
| K ₁ | 4,92 |
| K ₂ | 1,92 |
| K ₃ | 4,50 |
| K ₄ | 2,42 |
| K ₅ | 2,14 |

March

| Day | T | Sum | K ₁ | K ₂ | K ₃ | K ₄ | K ₅ |
|-----|----------|-----|----------------|----------------|----------------|----------------|----------------|
| 1. | 11110101 | 6 | 4 | 1 | 4 | 1 | 0 |
| 2. | 01001111 | 5 | 5 | 1 | 4 | 1 | 1 |
| 3. | 21122133 | 15 | 5 | 1 | 4 | 1 | 3 |
| 4. | 33233340 | 21 | 4 | 1 | 4 | 3 | 4 |
| 5. | 21111100 | 7 | 3 | 0 | 4 | 1 | 1 |
| 6. | 11021102 | 8 | 5 | 2 | 4 | 1 | 1 |
| 7. | 10101111 | 6 | 4 | 1 | 4 | 1 | 0 |
| 8. | 15223122 | 18 | 4 | 2 | 6 | 2 | 4 |
| 9. | 10225211 | 14 | 5 | 2 | 5 | 2 | 0 |
| 10. | 33252241 | 22 | 6 | 3 | 5 | 2 | 3 |
| 11. | 12132200 | 11 | 4 | 1 | 4 | 1 | 1 |
| 12. | 11223429 | 24 | 6 | 3 | 1 | 4 | 3 |
| 13. | 32354897 | 41 | 8 | 6 | 6 | 5 | 6 |
| 14. | 54533396 | 38 | 8 | 5 | 6 | 4 | 6 |
| 15. | 75422431 | 28 | 7 | 4 | 5 | 3 | 2 |
| 16. | 53233313 | 23 | 8 | 3 | 4 | 2 | 4 |
| 17. | 31212132 | 15 | 5 | 2 | 4 | 3 | 3 |
| 18. | 31011115 | 13 | 4 | 1 | 4 | 2 | 2 |
| 19. | 21116328 | 24 | 4 | 1 | 5 | 1 | 3 |
| 20. | 41222111 | 14 | 5 | 1 | 4 | 2 | 2 |
| 21. | 10111111 | 7 | 5 | 1 | 4 | 0 | 0 |
| 22. | 11011111 | 7 | 3 | 0 | 4 | 1 | 0 |
| 23. | 00211122 | 9 | 4 | 2 | 4 | 1 | 0 |
| 24. | 11243153 | 20 | 6 | 3 | 4 | 3 | 3 |
| 25. | 31251222 | 18 | 7 | 4 | 4 | 3 | 2 |
| 26. | 31254231 | 21 | 7 | 3 | 5 | 3 | 3 |
| 27. | 21222121 | 13 | 6 | 3 | 4 | 2 | 2 |
| 28. | 20001131 | 8 | 5 | 2 | 4 | 0 | 1 |
| 29. | 00110001 | 3 | 4 | 0 | 4 | 1 | 0 |
| 30. | 01011135 | 12 | 4 | 2 | 4 | 3 | 2 |
| 31. | 44423683 | 34 | 7 | 3 | 5 | 5 | 5 |

Monthly averages: T (N) 1,907
T (E) 1,407
K₁ 5,23
K₂ 2,07
K₃ 4,29
K₄ 2,07
K₅ 2,16

April

| Day | T | Sum | K ₁ | K ₂ | K ₃ | K ₄ | K ₅ |
|-----|----------|-----|----------------|----------------|----------------|----------------|----------------|
| 1. | 23432111 | 17 | 6 | 2 | 5 | 1 | 2 |
| 2. | 00114311 | 11 | 4 | 1 | 4 | 0 | 2 |
| 3. | 41131238 | 23 | 4 | 2 | 4 | 3 | 3 |
| 4. | 55724567 | 41 | 5 | 2 | 6 | 7 | 2 |
| 5. | 21222363 | 21 | 7 | 3 | 5 | 2 | 4 |
| 6. | 21221212 | 13 | 6 | 2 | 4 | 3 | 2 |
| 7. | 11211002 | 8 | 6 | 3 | 4 | 2 | 1 |
| 8. | 11111113 | 10 | 3 | 0 | 4 | 2 | 1 |
| 9. | 33879595 | 49 | 6 | 4 | 5 | 4 | 8 |
| 10. | 45434556 | 36 | 7 | 5 | 6 | 5 | 6 |
| 11. | 33544415 | 29 | 6 | 3 | 5 | 3 | 4 |
| 12. | 31223121 | 15 | 5 | 1 | 5 | 2 | 3 |
| 13. | 11223201 | 12 | 4 | 1 | 4 | 2 | 1 |
| 14. | 40019549 | 32 | 7 | 3 | 6 | 5 | 4 |
| 15. | 96334134 | 34 | 6 | 3 | 5 | 6 | 6 |
| 16. | 42443112 | 21 | 6 | 2 | 5 | 4 | 2 |
| 17. | 21121104 | 12 | 6 | 2 | 4 | 1 | 1 |
| 18. | 21112323 | 15 | 5 | 1 | 5 | 3 | 1 |
| 19. | 22522112 | 17 | 7 | 3 | 5 | 2 | 0 |
| 20. | 11122031 | 11 | 3 | 0 | 4 | 0 | 1 |
| 21. | 00113348 | 20 | 4 | 1 | 5 | 6 | 2 |
| 22. | 52121218 | 22 | 3 | 0 | 4 | 0 | 4 |
| 23. | 01132124 | 14 | 5 | 1 | 4 | 2 | 3 |
| 24. | 11011110 | 6 | 5 | 1 | 4 | 0 | 0 |
| 25. | 00000000 | 0 | 3 | 0 | 4 | 0 | 0 |
| 26. | 00002212 | 7 | 3 | 1 | 4 | 1 | 1 |
| 27. | 11111111 | 8 | 4 | 2 | 4 | 0 | 1 |
| 28. | 22329912 | 30 | 5 | 2 | 4 | 3 | 3 |
| 29. | 42334125 | 24 | 4 | 3 | 5 | 3 | 3 |
| 30. | 54211211 | 17 | 5 | 1 | 4 | 3 | 1 |

Monthly averages: T (N) 2,275
T (E) 1,752
K₁ 5,00
K₂ 1,83
K₃ 4,57
K₄ 2,50
K₅ 2,40

| May | | | | | | | |
|-----|----------|-----|----------------|----------------|----------------|----------------|----------------|
| Day | T | Sum | K ₁ | K ₂ | K ₃ | K ₄ | K ₅ |
| 1. | 11112112 | 10 | 3 | 0 | 4 | 2 | 1 |
| 2. | 72321211 | 19 | 5 | 2 | 4 | 0 | 1 |
| 3. | 11111223 | 12 | 5 | 2 | 4 | 1 | 1 |
| 4. | 32012110 | 10 | 4 | 1 | 4 | 1 | 2 |
| 5. | 21012224 | 14 | 5 | 2 | 4 | 2 | 3 |
| 6. | 34477596 | 45 | 7 | 4 | 5 | 4 | 6 |
| 7. | 65655487 | 46 | 8 | 5 | 6 | 3 | 5 |
| 8. | 23435332 | 25 | 6 | 3 | 4 | 2 | 1 |
| 9. | 32221311 | 15 | 5 | 2 | 4 | 1 | 1 |
| 10. | 33112111 | 13 | 4 | 1 | 6 | 0 | 2 |
| 11. | 12211001 | 8 | 4 | 1 | 4 | 0 | 0 |
| 12. | 10101001 | 4 | 4 | 0 | 4 | 0 | 0 |
| 13. | 20101111 | 7 | 3 | 0 | 4 | 1 | 1 |
| 14. | 12014334 | 18 | 4 | 1 | 4 | 1 | 4 |
| 15. | 41112422 | 17 | 4 | 1 | 4 | 2 | 2 |
| 16. | 00100011 | 3 | 4 | 0 | 4 | 0 | 0 |
| 17. | 75655797 | 51 | 6 | 4 | 6 | 6 | 8 |
| 18. | 95423444 | 35 | 5 | 2 | 4 | 3 | 6 |
| 19. | 21112313 | 14 | 4 | 1 | 5 | 2 | 3 |
| 20. | 20121000 | 6 | 5 | 2 | 4 | 0 | 2 |
| 21. | 10012110 | 6 | 4 | 1 | 4 | 2 | 1 |
| 22. | 31211011 | 10 | 4 | 1 | 4 | 0 | 2 |
| 23. | 42222222 | 18 | 5 | 2 | 4 | 2 | 2 |
| 24. | 01121222 | 11 | 5 | 2 | 4 | 3 | 2 |
| 25. | 12212212 | 13 | 5 | 2 | 5 | 1 | 1 |
| 26. | 21111211 | 10 | 3 | 2 | 4 | 1 | 2 |
| 27. | 200000 | (2) | 5 | 2 | 4 | 0 | 0 |
| 28. | 002121 | (8) | 5 | 1 | 4 | 1 | 2 |
| 29. | 20111122 | 10 | 5 | 3 | 4 | 2 | 1 |
| 30. | 41335324 | 25 | 5 | 2 | 5 | 5 | 3 |
| 31. | 11101110 | 6 | 5 | 2 | 4 | 1 | 0 |

Monthly averages: T (N) 1,930
T (E) 1,522
K₁ 4,71
K₂ 1,74
K₃ 4,32
K₄ 1,58
K₅ 2,19

June

| Day | T | Sum | K ₁ | K ₂ | K ₃ | K ₄ | K ₅ |
|-----|----------|-----|----------------|----------------|----------------|----------------|----------------|
| 1. | 01224334 | 19 | 4 | 1 | 4 | 2 | 3 |
| 2. | 44656539 | 42 | 7 | 4 | 5 | 1 | 5 |
| 3. | 36433233 | 27 | 6 | 3 | 5 | 5 | 3 |
| 4. | 21232111 | 13 | 5 | 3 | 5 | 2 | 1 |
| 5. | 12211111 | 10 | 5 | 2 | 4 | 1 | 1 |
| 6. | 11211110 | 8 | 3 | 0 | 4 | 1 | 1 |
| 7. | 01111111 | 7 | 3 | 1 | 5 | 2 | 1 |
| 8. | 32111011 | 10 | 4 | 1 | 4 | 1 | 2 |
| 9. | 00111111 | 6 | 3 | 0 | 4 | 0 | 1 |
| 10. | 01112111 | 8 | 2 | 0 | 4 | 1 | 0 |
| 11. | 11111101 | 7 | 3 | 1 | 5 | 3 | 1 |
| 12. | 01111001 | 5 | 2 | 1 | 4 | 1 | 1 |
| 13. | 00004331 | 11 | 2 | 0 | 5 | 2 | 2 |
| 14. | 11111101 | 7 | 2 | 0 | 4 | 1 | 0 |
| 15. | 01111113 | 9 | 3 | 2 | 5 | 1 | 2 |
| 16. | 11011111 | 7 | 3 | 0 | 4 | 1 | 1 |
| 17. | 11243211 | 15 | 3 | 0 | 4 | 2 | 1 |
| 18. | 12222112 | 13 | 3 | 2 | 4 | 2 | 1 |
| 19. | 12100100 | 3 | 4 | 0 | 4 | 1 | 1 |
| 20. | 11000010 | 3 | 3 | 1 | 4 | 1 | 0 |
| 21. | 01112112 | 9 | 3 | 1 | 5 | 1 | 1 |
| 22. | 12012120 | 9 | 4 | 1 | 4 | 0 | 2 |
| 23. | 22232420 | 17 | 4 | 1 | 4 | 0 | 2 |
| 24. | 01102123 | 10 | 3 | 2 | 4 | 2 | 1 |
| 25. | 22224437 | 26 | 4 | 1 | 5 | 2 | 4 |
| 26. | 94432121 | 26 | 6 | 3 | 5 | 4 | 2 |
| 27. | 11101101 | 6 | 3 | 0 | 4 | 3 | 1 |
| 28. | 01121313 | 12 | 2 | 0 | 5 | 2 | 2 |
| 29. | 32126445 | 27 | 5 | 2 | 5 | 5 | 5 |
| 30. | 52223113 | 19 | 6 | 2 | 5 | 4 | 2 |

Monthly averages: T (N) 1,529
T (E) 1,233
K₁ 3,67
K₂ 1,17
K₃ 4,43
K₄ 1,80
K₅ 1,67

July

| Day | T | Sum | K ₁ | K ₂ | K ₃ | K ₄ | K ₅ |
|-----|----------|-----|----------------|----------------|----------------|----------------|----------------|
| 1. | 33422112 | 18 | 6 | 3 | 5 | 4 | 2 |
| 2. | 33225212 | 20 | 5 | 3 | 5 | 4 | 4 |
| 3. | 31111211 | 11 | 4 | 0 | 4 | 1 | 1 |
| 4. | 31101112 | 10 | 3 | 0 | 4 | 1 | 2 |
| 5. | 12222023 | 14 | 4 | 2 | 5 | 2 | 2 |
| 6. | 32111253 | 18 | 3 | 0 | 4 | 2 | 3 |
| 7. | 31111111 | 10 | 2 | 1 | 4 | 1 | 1 |
| 8. | 12111041 | 11 | 4 | 1 | 4 | 2 | 2 |
| 9. | 32210011 | 10 | 3 | 0 | 4 | 2 | 2 |
| 10. | 21000012 | 6 | 3 | 2 | 4 | 2 | 1 |
| 11. | 01112131 | 10 | 3 | 1 | 5 | 2 | 1 |
| 12. | 21021243 | 15 | 2 | 0 | 4 | 2 | 4 |
| 13. | 42231121 | 16 | 3 | 1 | 5 | 2 | 2 |
| 14. | 22312211 | 14 | 4 | 2 | 4 | 2 | 2 |
| 15. | 13223111 | 14 | 4 | 2 | 4 | 2 | 2 |
| 16. | 12222111 | 12 | 4 | 1 | 4 | 4 | 2 |
| 17. | 22111210 | 10 | 5 | 1 | 5 | 0 | 1 |
| 18. | 01014230 | 11 | 3 | 1 | 4 | 3 | 2 |
| 19. | 42111111 | 12 | 5 | 1 | 4 | 1 | 1 |
| 20. | 11102210 | 8 | 4 | 2 | 4 | 0 | 1 |
| 21. | 10234942 | 25 | 5 | 3 | 4 | 3 | 3 |
| 22. | 23101002 | 9 | 2 | 0 | 4 | 0 | 1 |
| 23. | 21124142 | 17 | 3 | 1 | 5 | 2 | 2 |
| 24. | 32010010 | 7 | 4 | 1 | 4 | 0 | 2 |
| 25. | 01111100 | 5 | 3 | 1 | 4 | 0 | 0 |
| 26. | 00011396 | 20 | 4 | 2 | 4 | 2 | 3 |
| 27. | 43234211 | 20 | 6 | 2 | 5 | 3 | 2 |
| 28. | 12322101 | 12 | 5 | 2 | 4 | 1 | 2 |
| 29. | 00011432 | 11 | 4 | 2 | 4 | 1 | 2 |
| 30. | 61123121 | 17 | 3 | 0 | 4 | 1 | 2 |
| 31. | 11113122 | 12 | 3 | 0 | 5 | 3 | 1 |

Monthly averages:

| | |
|----------------|-------|
| T (N) | 1,465 |
| T (E) | 1,202 |
| K ₁ | 3,71 |
| K ₂ | 1,23 |
| K ₃ | 4,29 |
| K ₄ | 1,77 |
| K ₅ | 1,87 |

August

| Day | T | Sum | K ₁ | K ₂ | K ₃ | K ₄ | K ₅ |
|-----|----------|-----|----------------|----------------|----------------|----------------|----------------|
| 1. | 11112113 | 11 | 3 | 0 | 4 | 1 | 2 |
| 2. | 55522211 | 23 | 5 | 3 | 5 | 2 | 2 |
| 3. | 10101113 | 8 | 4 | 0 | 5 | 1 | 0 |
| 4. | 21211121 | 11 | 3 | 0 | 4 | 2 | 0 |
| 5. | 54211101 | 15 | 4 | 0 | 4 | 0 | 2 |
| 6. | 01100111 | 5 | 3 | 0 | 4 | 0 | 0 |
| 7. | 00121312 | 10 | 3 | 0 | 4 | 3 | 1 |
| 8. | 21122113 | 13 | 3 | 1 | 4 | 1 | 2 |
| 9. | 21121253 | 17 | 4 | 1 | 4 | 0 | 3 |
| 10. | 34313421 | 21 | 5 | 3 | 5 | 3 | 3 |
| 11. | 52443211 | 22 | 5 | 3 | 6 | 5 | 2 |
| 12. | 11323301 | 14 | 5 | 2 | 4 | 3 | 2 |
| 13. | 21112112 | 11 | 5 | 2 | 4 | 2 | 0 |
| 14. | 11111112 | 9 | 5 | 2 | 4 | 1 | 2 |
| 15. | 11012112 | 9 | 4 | 2 | 4 | 1 | 1 |
| 16. | 14213211 | 15 | 4 | 1 | 4 | 2 | 2 |
| 17. | 11121104 | 11 | 4 | 2 | 5 | 2 | 0 |
| 18. | 54115512 | 24 | 4 | 2 | 5 | 4 | 2 |
| 19. | 10110101 | 5 | 6 | 3 | 4 | 1 | 0 |
| 20. | 11000011 | 4 | 5 | 2 | 4 | 0 | 0 |
| 21. | 11221123 | 13 | 3 | 1 | 5 | 2 | 2 |
| 22. | 21112112 | 11 | 3 | 0 | 4 | 1 | 2 |
| 23. | 74432121 | 24 | 4 | 1 | 4 | 2 | 3 |
| 24. | 11112123 | 12 | 4 | 1 | 4 | 0 | 2 |
| 25. | 21112112 | 11 | 4 | 0 | 4 | 1 | 2 |
| 26. | 31121214 | 15 | 5 | 2 | 4 | 3 | 2 |
| 27. | 11100021 | 6 | 4 | 0 | 4 | 1 | 0 |
| 28. | 10011421 | 10 | 3 | 0 | 4 | 2 | 1 |
| 29. | 31125212 | 17 | 4 | 1 | 5 | 2 | 2 |
| 30. | 30111212 | 11 | 3 | 1 | 4 | 2 | 1 |
| 31. | 54666339 | 42 | 5 | 3 | 5 | 6 | 4 |

Monthly averages: T (N) 1,645
T (E) 1,306
K₁ 4,06
K₂ 1,23
K₃ 4,32
K₄ 1,81
K₅ 1,52

September

| Day | T | Sum | K ₁ | K ₂ | K ₃ | K ₄ | K ₅ |
|-----|----------|------|----------------|----------------|----------------|----------------|----------------|
| 1. | 52122132 | 19 | 4 | 3 | 5 | 2 | 2 |
| 2. | 00100001 | 2 | 3 | 0 | 4 | 0 | 0 |
| 3. | 11111011 | 7 | 3 | 1 | 4 | 1 | 0 |
| 4. | 00111344 | 14 | 4 | 1 | 4 | 1 | 2 |
| 5. | 31123215 | 18 | 4 | 2 | 4 | 1 | 3 |
| 6. | 11222211 | 12 | 4 | 2 | 4 | 2 | 1 |
| 7. | 42231238 | 25 | 6 | 2 | 4 | 2 | 5 |
| 8. | 21132 21 | (14) | 3 | 1 | 4 | 2 | 2 |
| 9. | 115412 | (18) | 5 | 1 | 5 | 1 | 2 |
| 10. | 31211112 | 12 | 5 | 2 | 4 | 0 | 2 |
| 11. | 01111112 | 8 | 3 | 1 | 4 | 1 | 1 |
| 12. | 12211122 | 12 | 4 | 1 | 4 | 1 | 2 |
| 13. | 67425321 | 30 | 3 | 3 | 5 | 2 | 4 |
| 14. | 12121234 | 16 | 5 | 2 | 5 | 3 | 2 |
| 15. | 31244121 | 18 | 6 | 2 | 6 | 3 | 2 |
| 16. | 21232212 | 15 | 7 | 3 | 4 | 2 | 3 |
| 17. | 41133134 | 20 | 6 | 3 | 5 | 2 | 4 |
| 18. | 96435343 | 37 | 6 | 4 | 6 | 5 | 6 |
| 19. | 02333331 | 18 | 7 | 3 | 5 | 3 | 2 |
| 20. | 22323242 | 20 | 7 | 3 | 5 | 3 | 3 |
| 21. | 21111124 | 13 | 7 | 3 | 4 | 1 | 2 |
| 22. | 10111002 | 6 | 5 | 1 | 4 | 0 | 1 |
| 23. | 00111100 | 4 | 4 | 0 | 4 | 0 | 0 |
| 24. | 00110134 | 10 | 3 | 1 | 5 | 1 | 1 |
| 25. | 24495312 | 30 | 5 | 2 | 5 | 4 | 6 |
| 26. | 11132349 | 24 | 6 | 2 | 4 | 3 | 6 |
| 27. | 66777441 | 42 | 9 | 6 | 8 | 5 | 6 |
| 28. | 31233133 | 19 | 7 | 4 | 5 | 3 | 2 |
| 29. | 31112022 | 12 | 5 | 2 | 4 | 2 | 3 |
| 30. | 21244483 | 28 | 7 | 3 | 6 | 3 | 7 |

Monthly averages: T (N) 2,068
T (E) 1,588
K₁ 5,10
K₂ 2,13
K₃ 4,67
K₄ 1,97
K₅ 2,73

October

| Day | T | Sum | K ₁ | K ₂ | K ₃ | K ₄ | K ₅ |
|-----|----------|-----|----------------|----------------|----------------|----------------|----------------|
| 1. | 65333414 | 29 | 8 | 3 | 5 | 3 | 5 |
| 2. | 52244154 | 27 | 6 | 3 | 6 | 3 | 5 |
| 3. | 64223461 | 28 | 6 | 3 | 5 | 2 | 6 |
| 4. | 31332126 | 21 | 6 | 2 | 4 | 2 | 4 |
| 5. | 22144215 | 21 | 6 | 2 | 4 | 3 | 2 |
| 6. | 64124643 | 30 | 7 | 5 | 6 | 4 | 3 |
| 7. | 31122249 | 24 | 3 | 1 | 4 | 1 | 4 |
| 8. | 34224162 | 24 | 5 | 2 | 5 | 2 | 4 |
| 9. | 24635562 | 33 | 6 | 3 | 5 | 3 | 7 |
| 10. | 52231213 | 19 | 6 | 3 | 4 | 2 | 3 |
| 11. | 10118232 | 18 | 4 | 1 | 5 | 1 | 2 |
| 12. | 10002334 | 13 | 5 | 1 | 4 | 1 | 2 |
| 13. | 66233422 | 28 | 6 | 3 | 5 | 3 | 4 |
| 14. | 31212221 | 14 | 5 | 2 | 4 | 1 | 2 |
| 15. | 42153102 | 18 | 6 | 2 | 5 | 3 | 2 |
| 16. | 21111130 | 10 | 4 | 1 | 4 | 2 | 2 |
| 17. | 00121003 | 7 | 5 | 2 | 4 | 1 | 1 |
| 18. | 11120120 | 8 | 6 | 2 | 4 | 0 | 1 |
| 19. | 00111001 | 4 | 4 | 1 | 4 | 0 | 0 |
| 20. | 00112120 | 7 | 4 | 1 | 4 | 2 | 1 |
| 21. | 10011022 | 7 | 4 | 0 | 4 | 1 | 2 |
| 22. | 00121121 | 8 | 2 | 0 | 4 | 1 | 1 |
| 23. | 00113322 | 12 | 3 | 0 | 4 | 2 | 2 |
| 24. | 11225223 | 18 | 6 | 2 | 5 | 3 | 3 |
| 25. | 21011212 | 10 | 4 | 0 | 4 | 1 | 2 |
| 26. | 00000001 | 1 | 4 | 1 | 4 | 0 | 1 |
| 27. | 11101002 | 6 | 4 | 0 | 4 | 1 | 1 |
| 28. | 11053455 | 24 | 5 | 3 | 6 | 4 | 4 |
| 29. | 77353666 | 43 | 7 | 4 | 6 | 4 | 7 |
| 30. | 43232210 | 17 | 5 | 2 | 4 | 2 | 2 |
| 31. | 11110120 | 7 | 4 | 2 | 4 | 2 | 1 |

Monthly averages: T (N) 2,069
T (E) 1,509
K₁ 5,03
K₂ 1,84
K₃ 4,52
K₄ 1,94
K₅ 2,77

| November | | | | | | | |
|----------|----------|-----|----------------|----------------|----------------|----------------|----------------|
| Day | T | Sum | K ₁ | K ₂ | K ₃ | K ₄ | K ₅ |
| 1. | 30111011 | 8 | 5 | 2 | 4 | 0 | 1 |
| 2. | 00110121 | 6 | 5 | 1 | 4 | 0 | 1 |
| 3. | 00011000 | 2 | 2 | 0 | 4 | 0 | 1 |
| 4. | 21121111 | 10 | 4 | 0 | 4 | 3 | 1 |
| 5. | 10111001 | 5 | 3 | 0 | 4 | 1 | 2 |
| 6. | 10011001 | 4 | 3 | 0 | 4 | 1 | 0 |
| 7. | 12112100 | 8 | 3 | 0 | 4 | 1 | 2 |
| 8. | 11122133 | 14 | 5 | 2 | 4 | 3 | 3 |
| 9. | 10100110 | 4 | 4 | 1 | 4 | 0 | 2 |
| 10. | 11010121 | 7 | 3 | 1 | 5 | 1 | 2 |
| 11. | 24143253 | 24 | 5 | 1 | 5 | 3 | 5 |
| 12. | 31321113 | 15 | 6 | 1 | 4 | 1 | 3 |
| 13. | 11111100 | 6 | 4 | 0 | 4 | 1 | 1 |
| 14. | 00000011 | 2 | 5 | 1 | 4 | 0 | 1 |
| 15. | 10011001 | 4 | 3 | 1 | 4 | 0 | 1 |
| 16. | 10010000 | 2 | 3 | 0 | 4 | 1 | 0 |
| 17. | 00000010 | 1 | 0 | 0 | 4 | 0 | 1 |
| 18. | 12112200 | 9 | 3 | 1 | 4 | 1 | 2 |
| 19. | 01211212 | 10 | 3 | 0 | 4 | 2 | 2 |
| 20. | 11111021 | 8 | 3 | 0 | 4 | 2 | 2 |
| 21. | 11223121 | 13 | 3 | 0 | 4 | 2 | 2 |
| 22. | 53232259 | 31 | 6 | 2 | 5 | 4 | 6 |
| 23. | 86774677 | 52 | 6 | 3 | 5 | 4 | 6 |
| 24. | 84646957 | 49 | 7 | 4 | 6 | 5 | 6 |
| 25. | 46536693 | 42 | 6 | 3 | 6 | 5 | 5 |
| 26. | 23543460 | 27 | 5 | 2 | 5 | 2 | 4 |
| 27. | 11222212 | 13 | 4 | 0 | 5 | 2 | 2 |
| 28. | 22122132 | 15 | 4 | 1 | 5 | 2 | 2 |
| 29. | 10001131 | 7 | 4 | 1 | 4 | 2 | 1 |
| 30. | 20111001 | 6 | 5 | 1 | 4 | 1 | 0 |

Monthly averages: T (N) 1,809
T (E) 1,062
K₁ 4,07
K₂ 0,97
K₃ 4,37
K₄ 1,67
K₅ 2,23

December

| Day | T | Sum | K ₁ | K ₂ | K ₃ | K ₄ | K ₅ |
|-----|----------|-----|----------------|----------------|----------------|----------------|----------------|
| 1. | 10101112 | 7 | 2 | 0 | 4 | 2 | 1 |
| 2. | 01001311 | 7 | 5 | 1 | 4 | 1 | 2 |
| 3. | 11222191 | 19 | 5 | 1 | 4 | 2 | 5 |
| 4. | 31222023 | 15 | 6 | 1 | 5 | 2 | 2 |
| 5. | 10112201 | 8 | 4 | 1 | 4 | 2 | 0 |
| 6. | 00010001 | 2 | 4 | 0 | 4 | 1 | 0 |
| 7. | 00000100 | 1 | 4 | 0 | 4 | 1 | 1 |
| 8. | 20100000 | 3 | 4 | 0 | 4 | 0 | 0 |
| 9. | 01161012 | 12 | 5 | 3 | 5 | 1 | 1 |
| 10. | 10011110 | 5 | 6 | 1 | 3 | 0 | 0 |
| 11. | 10011122 | 8 | 2 | 1 | 4 | 0 | 2 |
| 12. | 21011443 | 16 | 4 | 1 | 4 | 0 | 3 |
| 13. | 21111235 | 16 | 3 | 0 | 5 | 2 | 3 |
| 14. | 00021000 | 3 | 3 | 0 | 4 | 1 | 0 |
| 15. | 10011010 | 4 | 4 | 0 | 4 | 1 | 1 |
| 16. | 00010055 | 11 | 4 | 2 | 4 | 0 | 3 |
| 17. | 64432999 | 46 | 7 | 4 | 6 | 5 | 6 |
| 18. | 53369133 | 35 | 4 | 2 | 6 | 7 | 4 |
| 19. | 00334021 | 13 | 3 | 1 | 5 | 2 | 2 |
| 20. | 00000002 | 2 | 3 | 1 | 4 | 0 | 1 |
| 21. | 10111235 | 14 | 6 | 2 | 4 | 0 | 2 |
| 22. | 13234462 | 25 | 7 | 3 | 5 | 4 | 5 |
| 23. | 32322251 | 20 | 6 | 2 | 5 | 3 | 4 |
| 24. | 11112012 | 9 | 4 | 0 | 4 | 2 | 1 |
| 25. | 11111111 | 8 | 4 | 0 | 4 | 2 | 1 |
| 26. | 32211125 | 17 | 4 | 1 | 4 | 3 | 3 |
| 27. | 11010000 | 3 | 1 | 0 | 4 | 1 | 0 |
| 28. | 00011112 | 6 | 4 | 1 | 4 | 2 | 1 |
| 29. | 11133221 | 14 | 3 | 0 | 5 | 3 | 2 |
| 30. | 42233222 | 20 | 6 | 2 | 5 | 3 | 5 |
| 31. | 21111133 | 13 | 6 | 2 | 4 | 1 | 3 |

Monthly averages: T (N) 1,451
T (E) 0,996
K₁ 4,29
K₂ 1,06
K₃ 4,35
K₄ 1,74
K₅ 2,06

II. Average amplitudes for different periods

| Hour Parameter | 0 | 1 | 2 | 3 | 4 | 5 | 6 | 7 | 8 | 9 | 10 | 11 |
|-------------------|----------------|-----|-----|-----|-----|-----|-----|-----|-----|-----|-----|-----|
| | January North | | | | | | | | | | | |
| 1 | 8 | 7 | 7 | 9 | 9 | 13 | 15 | 18 | 21 | 19 | 17 | 17 |
| 2 | 8 | 8 | 2 | 5 | 6 | 11 | 8 | 12 | 14 | 14 | 18 | 16 |
| 3 | 31 | 31 | 35 | 34 | 34 | 35 | 41 | 38 | 37 | 36 | 38 | 38 |
| 4 | 48 | 45 | 64 | 65 | 48 | 51 | 42 | 48 | 37 | 50 | 55 | 50 |
| 5 | 63 | 87 | 67 | 64 | 44 | 48 | 47 | 31 | 52 | 41 | 20 | 47 |
| 6 | -8 | -10 | -24 | -27 | -16 | -19 | +12 | +21 | +27 | +22 | +2 | -64 |
| | East | | | | | | | | | | | |
| 1 | 6 | 9 | 9 | 8 | 11 | 12 | 13 | 19 | 26 | 21 | 24 | 24 |
| 2 | 8 | 6 | 4 | 2 | 5 | 14 | 11 | 13 | 15 | 12 | 15 | 20 |
| 3 | 36 | 34 | 35 | 32 | 31 | 32 | 36 | 39 | 37 | 34 | 36 | 34 |
| 4 | 33 | 55 | 37 | 37 | 34 | 39 | 38 | 44 | 38 | 28 | 47 | 30 |
| 5 | 61 | 35 | 41 | 46 | 31 | 43 | 38 | 19 | 43 | 39 | 23 | 44 |
| 6 | +12 | +7 | +10 | +4 | -9 | -17 | -5 | -6 | -20 | +38 | +41 | +1 |
| | February North | | | | | | | | | | | |
| 1 | 10 | 12 | 10 | 12 | 9 | 15 | 14 | 23 | 24 | 23 | 24 | 17 |
| 2 | 11 | 11 | 9 | 10 | 5 | 8 | 11 | 19 | 18 | 21 | 17 | 17 |
| 3 | 37 | 33 | 35 | 39 | 35 | 35 | 38 | 36 | 39 | 39 | 41 | 46 |
| 4 | 50 | 48 | 51 | 42 | 55 | 51 | 53 | 53 | 61 | 84 | 82 | 93 |
| 5 | 53 | 82 | 83 | 60 | 60 | 41 | 27 | 9 | 28 | 24 | 38 | 32 |
| 6 | +12 | +10 | -7 | +24 | -22 | -17 | -17 | -3 | +27 | -37 | -39 | -65 |
| | East | | | | | | | | | | | |
| 1 | 12 | 11 | 8 | 8 | 6 | 15 | 15 | 25 | 26 | 34 | 33 | 33 |
| 2 | 13 | 8 | 7 | 5 | 4 | 12 | 10 | 15 | 14 | 23 | 21 | 19 |
| 3 | 32 | 32 | 35 | 35 | 37 | 37 | 33 | 35 | 37 | 31 | 35 | 35 |
| 4 | 48 | 31 | 37 | 49 | 42 | 42 | 50 | 46 | 41 | 42 | 50 | 42 |
| 5 | 48 | 56 | 73 | 30 | 30 | 28 | 19 | 19 | 17 | 32 | 29 | 32 |
| 6 | +16 | +12 | +15 | +12 | +3 | -12 | +13 | -19 | -9 | +9 | +21 | +6 |

and hourly means of earth current elements

| 12 | 13 | 14 | 15 | 16 | 17 | 18 | 19 | 20 | 21 | 22 | 23 | Averages |
|-----------|-----|-----|-----|-----|-----|-----|-----|-----|-----|-----|-----|----------|
| Component | | | | | | | | | | | | |
| 19 | 20 | 20 | 16 | 10 | 10 | 11 | 8 | 11 | 8 | 8 | 9 | 12,7 |
| 18 | 12 | 12 | 8 | 6 | 8 | 11 | 8 | 10 | 8 | 5 | 8 | 9,9 |
| 35 | 37 | 41 | 34 | 34 | 33 | 32 | 35 | 34 | 34 | 36 | 37 | 35,2 |
| 64 | 72 | 55 | 46 | 55 | 46 | 34 | 34 | 60 | 48 | 61 | 39 | 50 |
| 52 | 30 | 44 | 60 | 59 | 72 | 74 | 112 | 81 | 48 | 70 | 128 | 59,9 |
| -49 | -19 | +12 | +33 | +19 | 0 | +26 | +27 | +12 | +5 | +23 | +2 | |
| Component | | | | | | | | | | | | |
| 28 | 26 | 25 | 22 | 18 | 13 | 14 | 11 | 12 | 9 | 9 | 12 | 15,8 |
| 17 | 20 | 19 | 16 | 12 | 8 | 12 | 8 | 8 | 8 | 9 | 9 | 11,1 |
| 35 | 33 | 30 | 31 | 29 | 31 | 35 | 35 | 34 | 37 | 32 | 31 | 33,8 |
| 52 | 47 | 42 | 30 | 38 | 24 | 43 | 39 | 45 | 39 | 33 | 36 | 38,7 |
| 26 | 30 | 31 | 63 | 46 | 77 | 57 | 83 | 67 | 71 | 59 | 99 | 48,9 |
| -6 | -10 | +8 | -14 | +9 | -20 | +2 | -23 | -4 | -12 | +3 | -21 | |
| Component | | | | | | | | | | | | |
| 21 | 24 | 22 | 18 | 19 | 13 | 14 | 11 | 12 | 10 | 8 | 14 | 15,6 |
| 16 | 21 | 15 | 13 | 14 | 8 | 10 | 10 | 10 | 7 | 9 | 13 | 12,6 |
| 37 | 35 | 39 | 35 | 35 | 33 | 33 | 37 | 37 | 32 | 38 | 33 | 36,5 |
| 63 | 68 | 50 | 52 | 36 | 51 | 39 | 39 | 35 | 36 | 54 | 46 | 53,8 |
| 80 | 41 | 80 | 43 | 101 | 68 | 60 | 95 | 95 | 113 | 83 | 98 | 62,1 |
| -98 | -42 | +11 | +51 | +60 | +10 | +5 | +15 | +21 | +49 | +42 | +9 | |
| Component | | | | | | | | | | | | |
| 33 | 33 | 37 | 29 | 29 | 23 | 17 | 11 | 14 | 15 | 10 | 15 | 20,5 |
| 19 | 19 | 18 | 14 | 15 | 12 | 10 | 12 | 13 | 12 | 12 | 13 | 13,3 |
| 33 | 36 | 30 | 37 | 32 | 31 | 33 | 37 | 37 | 37 | 33 | 37 | 34,3 |
| 48 | 40 | 38 | 36 | 37 | 41 | 44 | 59 | 47 | 48 | 53 | 37 | 43,5 |
| 35 | 35 | 58 | 41 | 68 | 62 | 68 | 46 | 61 | 53 | 53 | 108 | 45,7 |
| -5 | -14 | 0 | +28 | +10 | -1 | -2 | -14 | -20 | -5 | -5 | -12 | |

| Hour Parameter | 0 | 1 | 2 | 3 | 4 | 5 | 6 | 7 | 8 | 9 | 10 | 11 |
|-------------------|-------------|-----|-----|-----|----|----|-----|-----|-----|-----|------|------|
| | March North | | | | | | | | | | | |
| 1 | 10 | 16 | 10 | 11 | 13 | 15 | 23 | 26 | 22 | 21 | 17 | 18 |
| 2 | 12 | 9 | 10 | 9 | 9 | 9 | 16 | 24 | 18 | 19 | 13 | 16 |
| 3 | 34 | 35 | 37 | 35 | 35 | 35 | 34 | 37 | 48 | 40 | 34 | 38 |
| 4 | 35 | 60 | 53 | 39 | 31 | 39 | 49 | 47 | 62 | 52 | 57 | 66 |
| 5 | 90 | 63 | 41 | 60 | 73 | 35 | 37 | 27 | 26 | 27 | 42 | 59 |
| 6 | -4 | -18 | 0 | +5 | -3 | +5 | +10 | +50 | +50 | +11 | -55 | -16 |
| | East | | | | | | | | | | | |
| 1 | 13 | 13 | 9 | 12 | 13 | 15 | 25 | 27 | 27 | 31 | 33 | 31 |
| 2 | 11 | 12 | 9 | 8 | 9 | 9 | 15 | 16 | 15 | 16 | 20 | 17 |
| 3 | 33 | 30 | 34 | 36 | 34 | 36 | 34 | 34 | 35 | 35 | 35 | 38 |
| 4 | 26 | 40 | 39 | 21 | 28 | 39 | 32 | 26 | 27 | 34 | 34 | 34 |
| 5 | 69 | 69 | 32 | 55 | 42 | 24 | 33 | 30 | 27 | 37 | 36 | 52 |
| 6 | +9 | +2 | +19 | +13 | +6 | +8 | -5 | +21 | +48 | +42 | +36 | -4 |
| | April North | | | | | | | | | | | |
| 1 | 11 | 14 | 12 | 14 | 14 | 19 | 24 | 25 | 24 | 23 | 19 | 17 |
| 2 | 13 | 9 | 10 | 8 | 10 | 13 | 25 | 23 | 17 | 16 | 19 | 8 |
| 3 | 34 | 32 | 37 | 35 | 36 | 40 | 39 | 38 | 43 | 38 | 41 | 40 |
| 4 | 49 | 35 | 53 | 43 | 47 | 46 | 59 | 67 | 61 | 49 | 46 | 71 |
| 5 | 71 | 139 | 50 | 60 | 28 | 39 | 34 | 31 | 38 | 52 | 70 | 65 |
| 6 | 0 | -7 | +12 | +8 | -7 | -6 | +30 | +76 | +44 | -28 | -114 | -194 |
| | East | | | | | | | | | | | |
| 1 | 13 | 13 | 13 | 8 | 15 | 18 | 24 | 29 | 33 | 31 | 29 | 28 |
| 2 | 15 | 8 | 7 | 3 | 7 | 11 | 11 | 15 | 19 | 20 | 18 | 17 |
| 3 | 25 | 34 | 38 | 35 | 32 | 30 | 31 | 34 | 38 | 37 | 38 | 38 |
| 4 | 44 | 44 | 38 | 36 | 35 | 31 | 47 | 31 | 41 | 34 | 40 | 44 |
| 5 | 76 | 55 | 37 | 50 | 41 | 47 | 27 | 42 | 35 | 34 | 61 | 49 |
| 6 | -4 | +8 | +4 | +13 | 0 | -2 | +2 | +34 | +59 | +74 | +56 | -2 |

| 12 | 13 | 14 | 15 | 16 | 17 | 18 | 19 | 20 | 21 | 22 | 23 | Averages |
|-----------|-----|-----|-----|-----|-----|-----|-----|-----|-----|-----|-----|----------|
| Component | | | | | | | | | | | | |
| 17 | 19 | 20 | 15 | 16 | 14 | 11 | 11 | 15 | 9 | 10 | 10 | 15,3 |
| 16 | 19 | 13 | 10 | 10 | 12 | 7 | 14 | 13 | 7 | 11 | 13 | 12,9 |
| 50 | 38 | 37 | 35 | 35 | 38 | 35 | 37 | 33 | 32 | 34 | 37 | 36,7 |
| 55 | 46 | 48 | 64 | 46 | 38 | 35 | 33 | 63 | 56 | 58 | 36 | 48,7 |
| 65 | 53 | 49 | 33 | 29 | 49 | 100 | 95 | 84 | 70 | 74 | 99 | 57,6 |
| -90 | -51 | 0 | +54 | +36 | +34 | +33 | +22 | +36 | 0 | +5 | -17 | |
| Component | | | | | | | | | | | | |
| 30 | 37 | 33 | 33 | 27 | 21 | 13 | 15 | 17 | 10 | 15 | 16 | 21,4 |
| 19 | 17 | 20 | 17 | 13 | 12 | 8 | 12 | 15 | 11 | 17 | 13 | 13,6 |
| 37 | 32 | 33 | 34 | 34 | 31 | 31 | 31 | 37 | 39 | 37 | 33 | 34,3 |
| 45 | 45 | 43 | 42 | 38 | 40 | 34 | 70 | 63 | 42 | 61 | 48 | 39,6 |
| 37 | 27 | 27 | 44 | 38 | 38 | 86 | 45 | 61 | 90 | 94 | 61 | 48 |
| -31 | -29 | -6 | +6 | +2 | -13 | -41 | -11 | -28 | -9 | -41 | +5 | |
| Component | | | | | | | | | | | | |
| 16 | 17 | 14 | 10 | 11 | 11 | 8 | 11 | 12 | 11 | 10 | 11 | 14,7 |
| 11 | 14 | 13 | 6 | 7 | 8 | 5 | 8 | 10 | 10 | 7 | 13 | 11,7 |
| 40 | 38 | 37 | 36 | 37 | 39 | 37 | 37 | 31 | 40 | 35 | 37 | 37,2 |
| 54 | 53 | 97 | 89 | 62 | 39 | 44 | 31 | 61 | 29 | 86 | 74 | 55,9 |
| 95 | 93 | 77 | 32 | 43 | 61 | 55 | 122 | 104 | 121 | 70 | 141 | 70,3 |
| -174 | -86 | +11 | +63 | +86 | +76 | +53 | +50 | +46 | +26 | +36 | -1 | |
| Component | | | | | | | | | | | | |
| 29 | 24 | 28 | 25 | 20 | 17 | 11 | 11 | 12 | 15 | 13 | 14 | 19,6 |
| 16 | 16 | 19 | 14 | 11 | 11 | 4 | 7 | 10 | 8 | 11 | 16 | 12,2 |
| 32 | 31 | 40 | 36 | 35 | 35 | 35 | 34 | 34 | 37 | 35 | 32 | 34,3 |
| 46 | 50 | 79 | 57 | 61 | 41 | 41 | 73 | 50 | 50 | 73 | 70 | 48,2 |
| 64 | 64 | 39 | 30 | 32 | 59 | 50 | 79 | 83 | 76 | 61 | 92 | 53,4 |
| -6 | -18 | -26 | -13 | -24 | -23 | -33 | -42 | -23 | -16 | -13 | -5 | |

| 12 | 13 | 14 | 15 | 16 | 17 | 18 | 19 | 20 | 21 | 22 | 23 | Averages |
|-----------|-----|-----|-----|-----|-----|-----|-----|-----|-----|-----|-----|----------|
| Component | | | | | | | | | | | | |
| 14 | 14 | 15 | 12 | 11 | 10 | 7 | 11 | 13 | 13 | 7 | 9 | 14 |
| 8 | 8 | 9 | 9 | 9 | 5 | 4 | 10 | 13 | 10 | 10 | 10 | 11,7 |
| 35 | 34 | 37 | 35 | 35 | 37 | 36 | 37 | 38 | 35 | 32 | 37 | 36,3 |
| 52 | 52 | 60 | 53 | 45 | 54 | 61 | 40 | 36 | 40 | 56 | 62 | 46,8 |
| 52 | 83 | 39 | 46 | 47 | 44 | 44 | 77 | 77 | 91 | 54 | 77 | 58,8 |
| -140 | -91 | -6 | +49 | +82 | +82 | +64 | +28 | +32 | +20 | +27 | +17 | |
| Component | | | | | | | | | | | | |
| 25 | 26 | 28 | 20 | 16 | 14 | 12 | 11 | 11 | 13 | 9 | 9 | 17,1 |
| 15 | 16 | 19 | 14 | 12 | 12 | 7 | 11 | 11 | 11 | 8 | 7 | 12,4 |
| 39 | 35 | 31 | 38 | 34 | 38 | 34 | 35 | 33 | 35 | 32 | 33 | 33,8 |
| 51 | 37 | 59 | 48 | 49 | 46 | 56 | 41 | 33 | 29 | 52 | 40 | 40,1 |
| 39 | 71 | 41 | 52 | 75 | 62 | 54 | 85 | 92 | 106 | 59 | 84 | 54,5 |
| -5 | -1 | +5 | -8 | -25 | -19 | -20 | -43 | -35 | -17 | +11 | +2 | |
| Component | | | | | | | | | | | | |
| 11 | 10 | 8 | 4 | 4 | 5 | 6 | 4 | 9 | 7 | 9 | 13 | 10 |
| 10 | 5 | 3 | 6 | 5 | 4 | 5 | 5 | 10 | 9 | 8 | 15 | 9,7 |
| 36 | 34 | 33 | 35 | 35 | 34 | 30 | 36 | 36 | 37 | 37 | 36 | 36 |
| 59 | 55 | 77 | 46 | 52 | 44 | 43 | 36 | 32 | 38 | 47 | 45 | 46,4 |
| 43 | 57 | 43 | 41 | 37 | 50 | 46 | 42 | 49 | 74 | 48 | 65 | 43,0 |
| -127 | -86 | -34 | +16 | +65 | +72 | +37 | +25 | +20 | +22 | +40 | +14 | |
| Component | | | | | | | | | | | | |
| 15 | 17 | 15 | 9 | 10 | 11 | 5 | 6 | 8 | 7 | 8 | 12 | 11,1 |
| 11 | 12 | 13 | 7 | 10 | 6 | 8 | 4 | 10 | 8 | 7 | 13 | 9 |
| 38 | 35 | 37 | 36 | 35 | 34 | 34 | 32 | 32 | 31 | 41 | 36 | 34,9 |
| 40 | 39 | 55 | 36 | 55 | 42 | 50 | 42 | 31 | 54 | 28 | 38 | 39,9 |
| 54 | 47 | 51 | 71 | 49 | 58 | 52 | 48 | 59 | 79 | 52 | 68 | 44,8 |
| -2 | -3 | -25 | -40 | -31 | -18 | -15 | -43 | -38 | -14 | -4 | 0 | |

| Hour Parameter | 0 | 1 | 2 | 3 | 4 | 5 | 6 | 7 | 8 | 9 | 10 | 11 |
|-------------------|--------------|-----|-----|-----|-----|-----|-----|-----|-----|-----|------|------|
| | July North | | | | | | | | | | | |
| 1 | 9 | 12 | 13 | 13 | 16 | 19 | 20 | 16 | 14 | 12 | 14 | 15 |
| 2 | 10 | 10 | 14 | 12 | 11 | 13 | 15 | 13 | 11 | 9 | 11 | 8 |
| 3 | 32 | 36 | 35 | 37 | 39 | 39 | 41 | 37 | 35 | 36 | 35 | 38 |
| 4 | 39 | 41 | 33 | 40 | 33 | 64 | 68 | 45 | 40 | 45 | 41 | 47 |
| 5 | 62 | 66 | 57 | 48 | 47 | 40 | 39 | 31 | 23 | 22 | 38 | 38 |
| 6 | +19 | +5 | -10 | -1 | +25 | +43 | +40 | +40 | -4 | -70 | -122 | -146 |
| | East | | | | | | | | | | | |
| 1 | 6 | 10 | 5 | 8 | 10 | 10 | 19 | 19 | 18 | 22 | 20 | 23 |
| 2 | 8 | 7 | 6 | 5 | 6 | 5 | 9 | 10 | 10 | 12 | 11 | 15 |
| 3 | 34 | 37 | 33 | 35 | 32 | 31 | 35 | 34 | 34 | 39 | 35 | 35 |
| 4 | 35 | 38 | 42 | 29 | 28 | 28 | 29 | 34 | 38 | 35 | 35 | 33 |
| 5 | 59 | 45 | 34 | 44 | 24 | 32 | 33 | 21 | 9 | 26 | 36 | 43 |
| 6 | +8 | +18 | +1 | +12 | +18 | +43 | +62 | +72 | +74 | +51 | +12 | -12 |
| | August North | | | | | | | | | | | |
| 1 | 9 | 13 | 15 | 13 | 13 | 18 | 19 | 20 | 16 | 12 | 12 | 14 |
| 2 | 8 | 14 | 16 | 13 | 13 | 15 | 19 | 17 | 11 | 8 | 10 | 11 |
| 3 | 35 | 37 | 42 | 37 | 35 | 39 | 37 | 41 | 37 | 35 | 36 | 38 |
| 4 | 42 | 51 | 42 | 42 | 38 | 59 | 48 | 63 | 42 | 45 | 45 | 44 |
| 5 | 57 | 59 | 35 | 49 | 51 | 26 | 40 | 23 | 30 | 28 | 27 | 55 |
| 6 | +25 | +5 | +17 | +1 | +23 | +50 | +77 | +43 | +4 | -87 | -159 | -190 |
| | East | | | | | | | | | | | |
| 1 | 9 | 12 | 12 | 9 | 12 | 12 | 12 | 21 | 18 | 17 | 17 | 21 |
| 2 | 8 | 12 | 9 | 9 | 6 | 8 | 6 | 12 | 9 | 14 | 10 | 13 |
| 3 | 33 | 35 | 35 | 34 | 35 | 34 | 35 | 34 | 36 | 35 | 35 | 38 |
| 4 | 34 | 46 | 38 | 38 | 23 | 28 | 28 | 32 | 28 | 38 | 41 | 35 |
| 5 | 60 | 46 | 42 | 37 | 39 | 33 | 33 | 34 | 25 | 20 | 22 | 39 |
| 6 | -21 | -9 | -4 | -9 | 0 | +4 | +54 | +79 | +99 | +72 | +30 | -11 |

| 12 | 13 | 14 | 15 | 16 | 17 | 18 | 19 | 20 | 21 | 22 | 23 | Averages |
|-----------|-----|-----|-----|-----|-----|-----|-----|-----|-----|-----|-----|----------|
| Component | | | | | | | | | | | | |
| 12 | 9 | 7 | 7 | 4 | 4 | 5 | 6 | 7 | 9 | 8 | 5 | 10,6 |
| 10 | 8 | 8 | 5 | 7 | 5 | 8 | 6 | 11 | 13 | 9 | 7 | 9,9 |
| 36 | 34 | 37 | 34 | 35 | 37 | 35 | 37 | 34 | 36 | 33 | 35 | 36 |
| 55 | 46 | 55 | 31 | 59 | 41 | 60 | 37 | 54 | 39 | 41 | 51 | 45,9 |
| 55 | 59 | 54 | 51 | 23 | 36 | 57 | 65 | 57 | 77 | 55 | 38 | 47,5 |
| -140 | -97 | -37 | +31 | +77 | +89 | +77 | +35 | +55 | +23 | +35 | +34 | |

| | | | | | | | | | | | | |
|-----------|-----|-----|-----|-----|-----|-----|-----|-----|----|----|----|------|
| Component | | | | | | | | | | | | |
| 19 | 18 | 16 | 13 | 10 | 8 | 10 | 3 | 8 | 7 | 8 | 5 | 12,2 |
| 11 | 12 | 10 | 9 | 10 | 9 | 12 | 8 | 10 | 7 | 8 | 6 | 9 |
| 35 | 30 | 33 | 37 | 35 | 34 | 37 | 36 | 31 | 34 | 32 | 34 | 34,2 |
| 38 | 48 | 47 | 32 | 44 | 35 | 43 | 39 | 42 | 31 | 35 | 38 | 36,5 |
| 52 | 48 | 42 | 57 | 42 | 50 | 78 | 74 | 77 | 65 | 51 | 39 | 45 |
| -17 | -28 | -38 | -49 | -54 | -47 | -56 | -47 | -20 | -8 | -2 | +7 | |

| | | | | | | | | | | | | |
|-----------|-----|----|-----|-----|-----|-----|-----|-----|-----|-----|-----|------|
| Component | | | | | | | | | | | | |
| 12 | 10 | 7 | 10 | 9 | 8 | 8 | 8 | 9 | 9 | 8 | 12 | 11,8 |
| 10 | 10 | 7 | 8 | 8 | 6 | 6 | 9 | 9 | 10 | 9 | 16 | 10,8 |
| 39 | 38 | 37 | 37 | 35 | 35 | 35 | 33 | 34 | 36 | 36 | 37 | 36,7 |
| 53 | 60 | 48 | 53 | 46 | 35 | 41 | 44 | 42 | 55 | 35 | 48 | 46,8 |
| 49 | 40 | 41 | 24 | 36 | 41 | 48 | 31 | 32 | 73 | 78 | 48 | 42,4 |
| -149 | -75 | +9 | +50 | +98 | +80 | +33 | +21 | +32 | +32 | +43 | +17 | |

| | | | | | | | | | | | | |
|-----------|-----|-----|-----|-----|-----|-----|-----|-----|----|-----|----|------|
| Component | | | | | | | | | | | | |
| 19 | 17 | 17 | 16 | 15 | 13 | 9 | 6 | 5 | 9 | 15 | 15 | 13,6 |
| 12 | 15 | 9 | 10 | 9 | 9 | 9 | 7 | 8 | 12 | 12 | 15 | 10 |
| 36 | 38 | 35 | 34 | 34 | 34 | 36 | 34 | 32 | 36 | 34 | 35 | 34,9 |
| 36 | 59 | 44 | 37 | 34 | 41 | 38 | 35 | 44 | 36 | 35 | 53 | 37,6 |
| 42 | 22 | 38 | 25 | 56 | 40 | 42 | 36 | 33 | 73 | 53 | 41 | 38,8 |
| -42 | -43 | -43 | -27 | -11 | -33 | -40 | -33 | -27 | -9 | +16 | +8 | |

| Hour Parameter | 0 | 1 | 2 | 3 | 4 | 5 | 6 | 7 | 8 | 9 | 10 | 11 |
|-------------------|-----------------|-----|-----|-----|-----|-----|-----|-----|-----|-----|------|------|
| | September North | | | | | | | | | | | |
| 1 | 12 | 10 | 12 | 14 | 14 | 14 | 20 | 21 | 22 | 18 | 20 | 20 |
| 2 | 13 | 10 | 16 | 15 | 15 | 16 | 20 | 22 | 22 | 17 | 18 | 17 |
| 3 | 36 | 35 | 35 | 39 | 35 | 43 | 42 | 49 | 50 | 40 | 53 | 42 |
| 4 | 41 | 45 | 34 | 33 | 41 | 44 | 60 | 52 | 46 | 62 | 65 | 79 |
| 5 | 89 | 69 | 99 | 94 | 63 | 58 | 25 | 37 | 46 | 61 | 59 | 71 |
| 6 | +12 | +3 | -6 | -4 | +5 | +20 | +63 | +76 | +45 | -54 | -136 | -180 |
| | East | | | | | | | | | | | |
| 1 | 14 | 10 | 13 | 15 | 12 | 16 | 20 | 25 | 29 | 27 | 34 | 37 |
| 2 | 11 | 7 | 11 | 11 | 6 | 10 | 15 | 17 | 11 | 15 | 21 | 16 |
| 3 | 32 | 34 | 35 | 34 | 33 | 39 | 39 | 40 | 43 | 37 | 45 | 37 |
| 4 | 35 | 40 | 33 | 35 | 35 | 39 | 25 | 37 | 47 | 50 | 60 | 47 |
| 5 | 91 | 58 | 54 | 65 | 49 | 35 | 44 | 32 | 26 | 39 | 28 | 54 |
| 6 | -11 | +16 | +22 | +27 | +30 | +23 | +38 | +64 | +87 | +63 | +26 | -2 |
| | October North | | | | | | | | | | | |
| 1 | 10 | 10 | 9 | 12 | 17 | 20 | 23 | 25 | 23 | 22 | 20 | 18 |
| 2 | 10 | 7 | 10 | 12 | 11 | 12 | 19 | 23 | 19 | 15 | 15 | 15 |
| 3 | 37 | 36 | 44 | 37 | 37 | 36 | 35 | 40 | 39 | 37 | 38 | 39 |
| 4 | 20 | 38 | 42 | 56 | 40 | 47 | 47 | 48 | 52 | 54 | 54 | 61 |
| 5 | 157 | 123 | 118 | 67 | 52 | 48 | 45 | 30 | 45 | 38 | 58 | 78 |
| 6 | -10 | -39 | -26 | +3 | -26 | -9 | +21 | +74 | +81 | +9 | -88 | -154 |
| | East | | | | | | | | | | | |
| 1 | 15 | 10 | 13 | 10 | 16 | 17 | 24 | 26 | 30 | 33 | 31 | 33 |
| 2 | 9 | 8 | 9 | 2 | 4 | 6 | 15 | 16 | 15 | 16 | 19 | 19 |
| 3 | 34 | 35 | 34 | 35 | 33 | 36 | 31 | 36 | 35 | 34 | 42 | 34 |
| 4 | 24 | 45 | 39 | 31 | 31 | 31 | 41 | 35 | 32 | 44 | 46 | 45 |
| 5 | 83 | 60 | 53 | 64 | 65 | 37 | 32 | 19 | 34 | 28 | 30 | 48 |
| 6 | +5 | +11 | -7 | +6 | -5 | +12 | +17 | +29 | +58 | +67 | +52 | +10 |

| 12 | 13 | 14 | 15 | 16 | 17 | 18 | 19 | 20 | 21 | 22 | 23 | Averages |
|-----------|-----|-----|-----|-----|-----|-----|-----|-----|-----|-----|-----|----------|
| Component | | | | | | | | | | | | |
| 19 | 16 | 13 | 13 | 8 | 10 | 10 | 13 | 12 | 14 | 13 | 10 | 14,5 |
| 19 | 17 | 13 | 12 | 5 | 10 | 14 | 14 | 12 | 14 | 14 | 12 | 14,9 |
| 43 | 37 | 40 | 42 | 31 | 35 | 37 | 40 | 39 | 33 | 34 | 37 | 39,4 |
| 57 | 63 | 52 | 53 | 45 | 41 | 38 | 43 | 45 | 35 | 54 | 40 | 48,6 |
| 72 | 56 | 65 | 44 | 66 | 56 | 77 | 86 | 96 | 122 | 94 | 132 | 72,3 |
| -140 | -68 | +8 | +66 | +72 | +46 | +30 | +33 | +46 | +28 | +28 | +6 | |
| Component | | | | | | | | | | | | |
| 35 | 35 | 31 | 30 | 23 | 14 | 7 | 11 | 11 | 19 | 17 | 14 | 20,8 |
| 20 | 18 | 17 | 17 | 12 | 10 | 7 | 11 | 10 | 14 | 13 | 12 | 12,9 |
| 39 | 38 | 38 | 37 | 35 | 36 | 37 | 37 | 35 | 35 | 34 | 32 | 36,7 |
| 37 | 39 | 55 | 33 | 49 | 43 | 38 | 43 | 50 | 40 | 49 | 34 | 41,2 |
| 45 | 49 | 40 | 55 | 35 | 46 | 59 | 85 | 84 | 103 | 73 | 102 | 56,3 |
| -26 | -50 | -37 | -19 | -13 | -43 | -54 | -48 | -32 | -33 | -5 | -23 | |
| Component | | | | | | | | | | | | |
| 19 | 15 | 17 | 12 | 11 | 15 | 10 | 10 | 8 | 11 | 12 | 14 | 15,1 |
| 19 | 12 | 18 | 8 | 11 | 15 | 9 | 9 | 7 | 10 | 9 | 9 | 12,6 |
| 43 | 40 | 39 | 35 | 35 | 39 | 36 | 35 | 35 | 33 | 35 | 36 | 37,3 |
| 68 | 57 | 56 | 52 | 49 | 40 | 49 | 40 | 33 | 43 | 53 | 49 | 47,8 |
| 55 | 69 | 58 | 57 | 62 | 66 | 74 | 82 | 103 | 97 | 67 | 86 | 72,3 |
| -135 | -62 | +40 | +55 | +68 | +23 | +50 | +46 | +39 | +26 | +17 | 0 | |
| Component | | | | | | | | | | | | |
| 32 | 29 | 27 | 23 | 17 | 16 | 17 | 12 | 11 | 16 | 12 | 18 | 20,3 |
| 19 | 14 | 17 | 12 | 9 | 9 | 11 | 7 | 8 | 11 | 11 | 13 | 11,6 |
| 37 | 37 | 38 | 34 | 34 | 36 | 35 | 37 | 35 | 37 | 36 | 37 | 35,5 |
| 55 | 42 | 33 | 43 | 48 | 44 | 32 | 48 | 32 | 51 | 35 | 30 | 39,0 |
| 30 | 44 | 60 | 42 | 56 | 59 | 78 | 56 | 76 | 66 | 92 | 121 | 55,6 |
| -16 | -32 | -24 | -29 | -27 | -24 | -20 | -11 | -16 | -17 | -22 | -19 | |

| Hour Parameter | 0 | 1 | 2 | 3 | 4 | 5 | 6 | 7 | 8 | 9 | 10 | 11 |
|-------------------|----------------|-----|-----|-----|-----|-----|-----|-----|-----|-----|-----|-----|
| | November North | | | | | | | | | | | |
| 1 | 10 | 13 | 8 | 8 | 10 | 9 | 14 | 23 | 22 | 17 | 13 | 14 |
| 2 | 9 | 13 | 7 | 7 | 7 | 5 | 11 | 17 | 15 | 10 | 9 | 11 |
| 3 | 37 | 36 | 36 | 37 | 39 | 38 | 37 | 36 | 38 | 37 | 36 | 37 |
| 4 | 31 | 45 | 45 | 52 | 29 | 49 | 44 | 43 | 56 | 43 | 53 | 52 |
| 5 | 58 | 70 | 88 | 64 | 64 | 50 | 38 | 37 | 31 | 48 | 58 | 64 |
| 6 | +8 | -15 | -34 | -29 | -29 | -17 | +7 | +32 | +60 | +17 | -50 | -85 |
| | East | | | | | | | | | | | |
| 1 | 11 | 10 | 8 | 10 | 10 | 15 | 17 | 23 | 18 | 16 | 15 | 17 |
| 2 | 8 | 9 | 5 | 4 | 5 | 7 | 8 | 11 | 13 | 10 | 10 | 9 |
| 3 | 31 | 34 | 34 | 32 | 35 | 35 | 34 | 37 | 34 | 32 | 37 | 34 |
| 4 | 28 | 28 | 28 | 34 | 26 | 35 | 27 | 31 | 28 | 32 | 42 | 36 |
| 5 | 56 | 53 | 51 | 60 | 38 | 39 | 41 | 31 | 41 | 41 | 31 | 34 |
| 6 | +8 | +8 | +11 | +1 | -7 | -11 | -15 | +6 | +44 | +63 | +53 | +24 |
| | December North | | | | | | | | | | | |
| 1 | 4 | 4 | 9 | 3 | 5 | 9 | 11 | 17 | 25 | 21 | 17 | 16 |
| 2 | 6 | 5 | 8 | 3 | 4 | 6 | 9 | 12 | 16 | 13 | 14 | 14 |
| 3 | 37 | 36 | 38 | 35 | 37 | 37 | 33 | 39 | 36 | 38 | 37 | 46 |
| 4 | 39 | 54 | 64 | 46 | 49 | 44 | 41 | 43 | 41 | 49 | 53 | 52 |
| 5 | 51 | 62 | 59 | 58 | 39 | 42 | 46 | 18 | 35 | 32 | 32 | 44 |
| 6 | 0 | -3 | -37 | -22 | -12 | -8 | -10 | 0 | +48 | +35 | +4 | -43 |
| | East | | | | | | | | | | | |
| 1 | 5 | 6 | 10 | 6 | 8 | 13 | 17 | 19 | 26 | 27 | 19 | 24 |
| 2 | 6 | 6 | 5 | 2 | 4 | 5 | 8 | 6 | 11 | 11 | 10 | 13 |
| 3 | 34 | 35 | 32 | 34 | 30 | 28 | 32 | 35 | 32 | 37 | 36 | 46 |
| 4 | 30 | 26 | 33 | 30 | 28 | 34 | 33 | 33 | 31 | 35 | 45 | 38 |
| 5 | 60 | 52 | 62 | 37 | 37 | 38 | 38 | 21 | 30 | 31 | 17 | 29 |
| 6 | +17 | +9 | +6 | -2 | +3 | -3 | -39 | -14 | +4 | +38 | +46 | +26 |

| 12 | 13 | 14 | 15 | 16 | 17 | 18 | 19 | 20 | 21 | 22 | 23 | Averages |
|-----------|-----|-----|-----|-----|-----|-----|-----|-----|-----|-----|-----|----------|
| Component | | | | | | | | | | | | |
| 16 | 12 | 14 | 9 | 8 | 8 | 7 | 8 | 10 | 9 | 5 | 8 | 11,5 |
| 11 | 8 | 11 | 10 | 7 | 6 | 5 | 7 | 9 | 9 | 4 | 7 | 8,9 |
| 35 | 37 | 38 | 35 | 35 | 35 | 35 | 37 | 35 | 37 | 34 | 35 | 36,3 |
| 47 | 43 | 32 | 49 | 55 | 34 | 45 | 54 | 41 | 64 | 49 | 51 | 46,1 |
| 67 | 52 | 55 | 34 | 44 | 65 | 46 | 73 | 82 | 58 | 95 | 86 | 59,4 |
| -80 | -14 | +11 | +26 | +26 | +13 | +22 | +37 | +39 | +37 | +23 | -6 | |
| Component | | | | | | | | | | | | |
| 22 | 18 | 22 | 19 | 16 | 11 | 10 | 10 | 12 | 10 | 9 | 10 | 14,1 |
| 14 | 12 | 12 | 12 | 10 | 5 | 5 | 8 | 7 | 8 | 6 | 9 | 8,6 |
| 30 | 34 | 31 | 34 | 33 | 37 | 35 | 34 | 33 | 35 | 33 | 34 | 33,8 |
| 39 | 37 | 35 | 37 | 49 | 32 | 39 | 41 | 40 | 36 | 43 | 35 | 34,8 |
| 43 | 47 | 50 | 64 | 36 | 58 | 53 | 48 | 103 | 60 | 76 | 92 | 51,9 |
| -9 | -13 | -12 | -10 | -27 | -29 | -22 | -23 | -26 | -4 | -20 | +8 | |
| Component | | | | | | | | | | | | |
| 20 | 16 | 15 | 9 | 9 | 5 | 7 | 10 | 8 | 8 | 7 | 8 | 10,9 |
| 15 | 13 | 10 | 6 | 9 | 7 | 7 | 8 | 7 | 9 | 8 | 8 | 9,0 |
| 37 | 37 | 33 | 37 | 34 | 37 | 38 | 35 | 37 | 33 | 37 | 30 | 36,4 |
| 65 | 35 | 39 | 34 | 41 | 37 | 38 | 44 | 47 | 42 | 67 | 51 | 46,4 |
| 48 | 30 | 55 | 55 | 37 | 57 | 94 | 116 | 93 | 74 | 63 | 92 | 55,5 |
| -46 | -21 | +1 | +4 | +9 | +21 | +22 | +19 | +10 | +45 | +4 | -14 | |
| Component | | | | | | | | | | | | |
| 29 | 29 | 26 | 23 | 16 | 31 | 9 | 10 | 10 | 6 | 12 | 9 | 15,4 |
| 13 | 11 | 11 | 12 | 4 | 5 | 6 | 5 | 7 | 7 | 8 | 8 | 7,6 |
| 30 | 28 | 33 | 34 | 34 | 35 | 37 | 35 | 35 | 35 | 34 | 31 | 33,8 |
| 30 | 35 | 34 | 22 | 27 | 39 | 42 | 60 | 34 | 43 | 49 | 51 | 35,9 |
| 43 | 33 | 33 | 45 | 57 | 42 | 80 | 73 | 58 | 78 | 70 | 88 | 48,0 |
| +15 | -2 | -7 | -35 | -21 | +4 | -9 | -10 | -10 | -11 | -6 | -4 | |

| Hour Parameter | 0 | 1 | 2 | 3 | 4 | 5 | 6 | 7 | 8 | 9 | 10 | 11 |
|-------------------|------------------|----|-----|----|----|-----|-----|-----|-----|-----|-----|------|
| | Year 1970. North | | | | | | | | | | | |
| 1. | 10 | 11 | 11 | 11 | 13 | 15 | 16 | 21 | 21 | 18 | 17 | 16 |
| 2. | 10 | 11 | 12 | 10 | 10 | 12 | 15 | 18 | 15 | 14 | 14 | 12 |
| 3. | 35 | 35 | 37 | 36 | 36 | 38 | 38 | 39 | 40 | 38 | 39 | 39 |
| 4. | 39 | 45 | 46 | 44 | 41 | 49 | 51 | 50 | 50 | 52 | 55 | 59 |
| 5. | 73 | 80 | 72 | 60 | 52 | 42 | 38 | 27 | 33 | 37 | 41 | 55 |
| 6. | +8 | -7 | -10 | -2 | 0 | +12 | +28 | +42 | +32 | -24 | -81 | -129 |
| | East | | | | | | | | | | | |
| 1. | 10 | 10 | 10 | 10 | 11 | 14 | 18 | 23 | 24 | 25 | 25 | 26 |
| 2. | 10 | 9 | 8 | 6 | 6 | 8 | 10 | 13 | 13 | 14 | 15 | 15 |
| 3. | 33 | 34 | 35 | 34 | 33 | 33 | 34 | 34 | 36 | 35 | 37 | 37 |
| 4. | 33 | 41 | 37 | 34 | 31 | 34 | 33 | 35 | 36 | 37 | 45 | 39 |
| 5. | 64 | 52 | 49 | 48 | 39 | 34 | 33 | 26 | 27 | 34 | 33 | 42 |
| 6. | +5 | +7 | +7 | +6 | +3 | +6 | +13 | +31 | +50 | +48 | +34 | +1 |
| | Quiet days North | | | | | | | | | | | |
| 1. | 7 | 11 | 11 | 8 | 12 | 13 | 16 | 18 | 17 | 14 | 13 | 13 |
| 2. | 6 | 10 | 10 | 6 | 8 | 7 | 10 | 13 | 11 | 9 | 9 | 8 |
| 3. | 35 | 33 | 35 | 34 | 34 | 35 | 33 | 34 | 36 | 36 | 35 | 36 |
| 4. | 30 | 42 | 33 | 35 | 33 | 37 | 36 | 39 | 38 | 38 | 39 | 46 |
| 5. | 37 | 32 | 31 | 25 | 30 | 24 | 27 | 15 | 17 | 25 | 28 | 28 |
| 6. | +5 | -3 | -6 | -1 | 0 | +26 | +34 | +48 | +46 | -7 | -81 | -130 |
| | East | | | | | | | | | | | |
| 1. | 6 | 8 | 8 | 7 | 8 | 10 | 14 | 20 | 19 | 17 | 17 | 17 |
| 2. | 8 | 8 | 7 | 4 | 4 | 6 | 6 | 8 | 10 | 9 | 9 | 8 |
| 3. | 31 | 33 | 33 | 32 | 32 | 31 | 31 | 33 | 31 | 31 | 36 | 33 |
| 4. | 20 | 26 | 25 | 28 | 24 | 27 | 24 | 29 | 29 | 27 | 30 | 27 |
| 5. | 39 | 32 | 29 | 25 | 28 | 24 | 24 | 16 | 15 | 27 | 18 | 28 |
| 6. | +7 | +1 | +6 | +2 | -3 | -4 | +7 | +26 | +45 | +49 | +35 | +7 |

| 12 | 13 | 14 | 15 | 16 | 17 | 18 | 19 | 20 | 21 | 22 | 23 | Averages |
|-----------|-----|-----|-----|-----|-----|-----|-----|-----|-----|-----|-----|----------|
| Component | | | | | | | | | | | | |
| 16 | 15 | 14 | 11 | 10 | 9 | 9 | 9 | 11 | 10 | 9 | 10 | 13,1 |
| 14 | 12 | 11 | 8 | 8 | 8 | 8 | 9 | 10 | 10 | 9 | 11 | 11,2 |
| 39 | 37 | 37 | 36 | 35 | 36 | 35 | 36 | 35 | 35 | 35 | 35 | 36,7 |
| 58 | 55 | 56 | 52 | 49 | 42 | 44 | 40 | 46 | 44 | 40 | 49 | 48,1 |
| 60 | 55 | 55 | 44 | 49 | 55 | 65 | 68 | 79 | 85 | 86 | 91 | 58,4 |
| -114 | -59 | +2 | +41 | +58 | +45 | +38 | +30 | +33 | +26 | +27 | +5 | |
| Component | | | | | | | | | | | | |
| 26 | 26 | 25 | 22 | 18 | 15 | 11 | 10 | 11 | 11 | 11 | 12 | 16,8 |
| 15 | 15 | 15 | 13 | 11 | 9 | 8 | 8 | 10 | 10 | 10 | 11 | 10,9 |
| 35 | 34 | 34 | 35 | 33 | 34 | 35 | 35 | 34 | 36 | 34 | 34 | 34,5 |
| 43 | 43 | 47 | 38 | 44 | 39 | 42 | 49 | 42 | 41 | 46 | 42 | 39,6 |
| 42 | 43 | 42 | 49 | 49 | 54 | 63 | 63 | 71 | 77 | 66 | 83 | 49,2 |
| -13 | -20 | -17 | -17 | -18 | -22 | -28 | -29 | -23 | -13 | -7 | -4 | |
| Component | | | | | | | | | | | | |
| 12 | 11 | 10 | 7 | 7 | 6 | 6 | 7 | 6 | 6 | 5 | 8 | 10,2 |
| 7 | 8 | 5 | 5 | 5 | 3 | 4 | 5 | 6 | 7 | 6 | 11 | 7,5 |
| 34 | 33 | 34 | 35 | 33 | 33 | 32 | 35 | 34 | 33 | 32 | 32 | 34,0 |
| 41 | 37 | 39 | 36 | 33 | 31 | 30 | 31 | 34 | 33 | 38 | 41 | 36,3 |
| 30 | 27 | 24 | 20 | 23 | 26 | 33 | 28 | 22 | 25 | 22 | 25 | 26,0 |
| -114 | -55 | -2 | +35 | +51 | +37 | +22 | +13 | +15 | +25 | +23 | +19 | |
| Component | | | | | | | | | | | | |
| 17 | 18 | 18 | 15 | 11 | 10 | 8 | 5 | 9 | 8 | 6 | 8 | 11,8 |
| 9 | 9 | 9 | 7 | 5 | 6 | 6 | 5 | 8 | 8 | 8 | 12 | 7,5 |
| 32 | 33 | 33 | 33 | 32 | 32 | 33 | 31 | 33 | 33 | 31 | 30 | 32,2 |
| 32 | 30 | 30 | 30 | 32 | 27 | 32 | 28 | 31 | 26 | 30 | 30 | 28,1 |
| 18 | 23 | 25 | 28 | 25 | 30 | 31 | 32 | 26 | 31 | 27 | 39 | 26,7 |
| -14 | -21 | -19 | -17 | -15 | -22 | -27 | -24 | -17 | -6 | +4 | +0 | |

OBSERVATORY REPORT NAGYCEK

| Hour Parameter | 0 | 1 | 2 | 3 | 4 | 5 | 6 | 7 | 8 | 9 | 10 | 11 |
|-------------------|-----|-----|------|-----|-----|-----|-----|-----|-----|----------------|-----|------|
| | | | | | | | | | | Disturbed days | | |
| 1. | 10 | 17 | 18 | 24 | 25 | 25 | 28 | 36 | 35 | 29 | 29 | 27 |
| 2. | 10 | 17 | 24 | 18 | 19 | 30 | 36 | 42 | 38 | 28 | 35 | 25 |
| 3. | 31 | 35 | 39 | 41 | 52 | 54 | 46 | 68 | 90 | 41 | 73 | 51 |
| 4. | 50 | 41 | 55 | 71 | 65 | 68 | 90 | 73 | 95 | 64 | 105 | 113 |
| 5. | 143 | 180 | 317 | 172 | 140 | 132 | 110 | 97 | 44 | 122 | 45 | 50 |
| 6. | +32 | -24 | -127 | -17 | -18 | -46 | +3 | +36 | +42 | +24 | -50 | -119 |
| | | | | | | | | | | East | | |
| 1. | 15 | 13 | 26 | 27 | 30 | 33 | 46 | 42 | 41 | 43 | 46 | 47 |
| 2. | 12 | 13 | 19 | 18 | 20 | 15 | 26 | 44 | 38 | 38 | 44 | 33 |
| 3. | 36 | 36 | 42 | 39 | 42 | 42 | 42 | 66 | 68 | 36 | 55 | 52 |
| 4. | 50 | 57 | 77 | 54 | 72 | 74 | 42 | 73 | 46 | 54 | 75 | 45 |
| 5. | 116 | 110 | 153 | 101 | 55 | 70 | 96 | 44 | 79 | 56 | 30 | 90 |
| 6. | +45 | -7 | +12 | +1 | +8 | +19 | +24 | +13 | +37 | +77 | +83 | -22 |

| 12 | 13 | 14 | 15 | 16 | 17 | 18 | 19 | 20 | 21 | 22 | 23 | Averages |
|-----------------|-----|-----|-----|-----|-----|-----|-----|-----|-----|-----|-----|----------|
| North Component | | | | | | | | | | | | |
| 26 | 28 | 28 | 22 | 22 | 21 | 20 | 19 | 17 | 18 | 13 | 15 | 23,0 |
| 27 | 24 | 27 | 25 | 22 | 22 | 18 | 18 | 17 | 15 | 12 | 17 | 23,5 |
| 44 | 43 | 45 | 44 | 41 | 39 | 41 | 44 | 45 | 36 | 34 | 35 | 46,3 |
| 52 | 84 | 75 | 81 | 82 | 82 | 98 | 51 | 70 | 73 | 60 | 70 | 73,6 |
| 189 | 151 | 142 | 114 | 158 | 142 | 163 | 334 | 204 | 177 | 182 | 190 | 154,0 |
| -91 | -14 | -8 | +90 | +86 | +24 | +82 | +48 | -26 | +15 | +67 | -11 | |
| Component | | | | | | | | | | | | |
| 45 | 44 | 50 | 35 | 30 | 34 | 28 | 29 | 17 | 24 | 15 | 24 | 32,6 |
| 33 | 27 | 31 | 24 | 26 | 19 | 16 | 19 | 13 | 15 | 12 | 17 | 23,8 |
| 46 | 46 | 28 | 41 | 39 | 37 | 41 | 39 | 37 | 36 | 41 | 31 | 42,4 |
| 53 | 64 | 68 | 46 | 70 | 39 | 83 | 117 | 56 | 36 | 69 | 61 | 61,7 |
| 102 | 124 | 123 | 160 | 161 | 153 | 165 | 181 | 190 | 215 | 153 | 176 | 121,7 |
| +19 | +16 | -8 | -7 | -44 | -47 | -68 | -60 | -21 | -20 | -38 | -15 | |

III.

Results of harmonical analysis of the daily variations

| | A1 | φ_1 | A2 | φ_2 | A3 | φ_3 | A4 | φ_4 | A5 | φ_5 | A6 | φ_6 |
|-----------------|----|-------------|----|-------------|----|-------------|----|-------------|----|-------------|----|-------------|
| North Component | | | | | | | | | | | | |
| January | 11 | 173 | 20 | 244 | 18 | 114 | 12 | 308 | 9 | 120 | 5 | 263 |
| February | 32 | 133 | 17 | 286 | 24 | 119 | 23 | 279 | 2 | 351 | 5 | 174 |
| March | 18 | 123 | 41 | 277 | 28 | 108 | 22 | 310 | 6 | 156 | 3 | 117 |
| April | 50 | 124 | 67 | 282 | 49 | 114 | 29 | 311 | 6 | 207 | 4 | 230 |
| May | 49 | 121 | 63 | 287 | 39 | 121 | 7 | 259 | 3 | 135 | 1 | 44 |
| June | 53 | 101 | 62 | 290 | 32 | 130 | 5 | 221 | 4 | 241 | 6 | 28 |
| July | 59 | 118 | 64 | 284 | 34 | 121 | 3 | 172 | 2 | 254 | 4 | 89 |
| August | 59 | 114 | 69 | 297 | 50 | 137 | 9 | 320 | 5 | 297 | 5 | 12 |
| September | 45 | 115 | 62 | 265 | 50 | 133 | 23 | 330 | 2 | 280 | 5 | 113 |
| October | 28 | 137 | 55 | 270 | 44 | 121 | 33 | 314 | 13 | 166 | 6 | 178 |
| November | 20 | 150 | 31 | 245 | 27 | 125 | 21 | 325 | 8 | 149 | 5 | 45 |
| December | 10 | 174 | 22 | 228 | 13 | 93 | 12 | 289 | 8 | 136 | 10 | 12 |
| Year | 34 | 123 | 45 | 279 | 33 | 122 | 15 | 307 | 3 | 164 | 1 | 63 |
| Q | 30 | 107 | 42 | 278 | 37 | 123 | 14 | 302 | 5 | 178 | 3 | 16 |
| D | 33 | 175 | 37 | 262 | 45 | 117 | 10 | 265 | 20 | 158 | 6 | 128 |
| East Component | | | | | | | | | | | | |
| January | 9 | 329 | 8 | 135 | 11 | 37 | 7 | 281 | 3 | 93 | 5 | 314 |
| February | 1 | 310 | 9 | 145 | 9 | 36 | 8 | 237 | 4 | 40 | 2 | 239 |
| March | 21 | 352 | 2 | 198 | 16 | 64 | 12 | 275 | 6 | 80 | 4 | 123 |
| April | 30 | 344 | 14 | 167 | 15 | 59 | 11 | 272 | 3 | 172 | 3 | 16 |
| May | 22 | 350 | 7 | 157 | 17 | 120 | 4 | 7 | 6 | 208 | 2 | 273 |
| June | 37 | 355 | 11 | 196 | 12 | 120 | 3 | 9 | 8 | 242 | 5 | 4 |
| July | 48 | 8 | 18 | 187 | 13 | 133 | 4 | 0 | 1 | 266 | 4 | 31 |
| August | 38 | 356 | 29 | 208 | 23 | 103 | 10 | 276 | 6 | 259 | 2 | 210 |
| September | 47 | 359 | 12 | 223 | 16 | 80 | 13 | 278 | 4 | 299 | 4 | 116 |
| October | 28 | 346 | 17 | 193 | 15 | 44 | 5 | 286 | 6 | 80 | 2 | 21 |
| November | 21 | 339 | 18 | 142 | 15 | 40 | 9 | 271 | 6 | 114 | 1 | 301 |
| December | 9 | 326 | 15 | 122 | 15 | 356 | 4 | 188 | 6 | 142 | 6 | 12 |
| Year | 25 | 353 | 10 | 176 | 11 | 71 | 6 | 279 | 1 | 151 | 1 | 7 |
| Q | 21 | 353 | 14 | 170 | 11 | 70 | 7 | 266 | 0 | 170 | 0 | 45 |
| D | 40 | 342 | 17 | 120 | 7 | 86 | 8 | 289 | 13 | 90 | 11 | 17 |

IV.

Special phenomena
(*magnetic and earth current data*)
SSC-s

| Month | Day | CET (GMT+1h) | Amplitude in | | Ex | Ey | Hx | Hy | End of Storm |
|-------|-----|-----------------|--------------|----------|----|----|----|----------|--------------|
| | | | E(mV/km) | H(gamma) | | | | | |
| 1. | 18. | 10.00 | 5,5 | 11 | + | + | + | - | 1.18. 24.00 |
| | 24. | 20.30 | 5,5 | 12 | + | + | + | -(si?) | 1.25. 3.00 |
| | 27. | 5.30 | 14,5 | 55 | - | + | + | + | 1.29. 2.00 |
| 3. | 19. | 12.45 | 8 | 35 | + | + | + | - | 3.20. 3.00 |
| 4. | 3. | 22.45 | 12,5 | 48 | + | + | + | -(b?) | 4.05. 0.00 |
| | 9. | 5.30 | 4,5 | 12 | + | + | + | - | 4.12. 4.00 |
| | 14. | 13.45 | 20 | 45 | + | + | + | - | 4.16. 17.00 |
| | 20. | 19.15 | 5,5 | 16 | + | + | + | - | 4.20. 23.00 |
| | 21. | 17.30 | 7 | 15 | + | + | + | - | 4.22. 5.00 |
| | 28. | 14.00 | 20 | 70 | + | + | + | - | 4.28. 19.00 |
| 5. | 15. | 16.30 | >7 | 15 | + | + | + | -(?) | no storm |
| | 17. | 7.30 | >9 | 32 | + | + | + | + | 5.18. 22.00 |
| | 29. | 19.00 | 4,5 | 12 | + | + | + | -(pt.b?) | 5.30. 3.00 |
| 6. | 13. | 14.30 | 5,5 | 14 | + | + | + | - | 6.13. 22.00 |
| | 22. | 10.45 | 3,5 | 10 | + | + | + | -(?) | no storm |
| | 23. | 00.00 | 4,5 | 13 | + | + | + | -(?) | no storm |
| 7. | 21. | 6.30 | 3,5 | 12 | + | + | + | -(?) | 7.22. 4.00 |
| 8. | 7. | 15.30 | 3,5 | 9 | + | + | + | - | 8.07. 24.00 |
| | 17. | 21.45 | 4,5 | 16 | + | + | + | - | 8.18. 5.00 |
| 9. | 4. | 17.45 | 7 | 18 | + | + | + | - | 9.05. 2.00 |
| 10. | 5. | 23.45 | 11,5 | 30 | + | + | + | - | 10.06. 20.00 |
| | 7. | 17.00 | 3,5 | 7 | + | + | + | -(?) | 10.08. 9.00 |
| | 8. | 18.00 | 7 | 28 | + | + | + | - | 10.09. 17.00 |
| 12. | 16. | 20.00 | 9 | 25 | + | + | + | - | 12.17. 10.00 |
| | 17. | 15.15 | 10 | 29 | + | + | + | - | 12.18. 4.00 |
| | 18. | 11.15 | 12,5 | 25 | + | + | + | -(?) | 12.18. 15.00 |
| | 19. | 7.45 | 8 | 6 | - | + | + | + | 12.19. 14.00 |

| | | <i>Bays</i> | | | | <i>Pt-s</i> | | | | | |
|-------|-----|-----------------|--------------|----------|----|-------------|----|----|----------|----|----|
| Month | Day | CET (GMT+1h) | Amplitude in | | Ex | Ey | Hx | Hy | E(mV/km) | Ex | Ey |
| | | | E(mV/km) | H(gamma) | | | | | | | |
| 1. | 1. | 2.00 | 3,5 | 25 | + | + | + | - | 2,5 | + | + |
| | | 18.30 | 3,5 | 25 | - | + | - | + | 2,5 | - | - |
| | 2. | 1.30 | | | | | | | 2 | + | + |
| | | 12.45 | | | | | | | 8 (pg) | | |
| | | 14.45 | 7 | 55 | - | - | - | + | | | |
| | 3. | 17.30 | 14,5 | 80 | - | + | + | + | tr | | |
| | | 19.15 | 17 | 105 | - | + | + | + | | | |
| | | 23.30 | 8 | 55 | + | + | + | - | tr | | |
| | 5. | 18.30 | 4,5 | 25 | - | - | - | + | tr | | |
| | 10. | 20.00 | 6 | 45 | - | + | + | + | 3,5 | - | + |
| | 11. | 16.15 | 4,5 | 35 | - | - | - | + | tr | | |
| | 12. | 0.15 | 6,5 | 22 | + | + | + | + | 2,5 | + | + |
| | 14. | 14.00 | 4,5 | 9 | - | - | - | + | | | |
| | 15. | 0.45 | 3,5 | 8 | - | - | - | + | | | |
| | | 22.00 | 5,5 | 20 | - | + | + | + | 2,5 | + | - |
| | 16. | 22.00 | 3,5 | 12 | - | - | - | + | 2,5 | - | - |
| | | 22.45 | 6,5 | 18 | - | + | + | + | 4,5 | - | + |
| | 17. | 21.15 | 4,5 | 18 | - | + | + | + | 3,5 | - | + |
| | 19. | 17.45 | 6,5 | 35 | + | + | + | + | tr | | |
| | | 20.45 | 6,5 | 45 | - | + | + | + | | | |
| | 20. | 10.00 | 7 | 50 | - | - | - | + | | | |
| | | 12.30 | | | | | | | (pg) | | |
| | | 18.00 | 8 | 35 | - | - | - | + | tr | | |
| | | 23.30 | 4,5 | 25 | + | + | + | - | 2 | + | + |
| | 22. | 22.00 | 5,5 | 35 | - | + | + | + | tr | | |
| | 23. | 2.45 | 6,5 | 20 | + | + | + | - | | | |
| | 24. | 21.15 | 9 | 45 | + | + | + | - | 2,5 | + | - |
| | 27. | 23.30 | 6,5 | 40 | + | + | + | - | tr | | |
| | 28. | 3.30 | 5,5 | 50 | + | + | + | - | tr | | |
| | | 16.45 | 12,5 | 85 | - | + | + | + | | | |
| | | 23.00 | 21,5 | 100 | + | + | + | - | | | |

| | | <i>Bays</i> | | | | <i>Pt-s</i> | | | | | |
|-------|-----|-----------------|--------------|----------|----|-------------|----|----------|----------|----|----|
| Month | Day | CET (GMT+1h) | Amplitude in | | Ex | Ey | Hx | Hy | E(mV/km) | Ex | Ey |
| | | | E(mV/km) | H(gamma) | | | | | | | |
| | 30. | 5.30 | 12,5 | 50 | + | + | + | - | | | |
| | | 20.45 | 9 | 70 | + | + | + | + | 2 | - | - |
| | 31. | 18.45 | 9 | 50 | - | + | + | + | | | |
| 2. | 1. | 16.15 | 12,5 | 70 | - | + | + | + | tr | | |
| | 2. | 19.15 | 7? | 30 | - | + | + | + | | | |
| | | 22.30 | 3,5 | 20 | + | + | + | - | 2 | + | + |
| | 3. | 1.15 | 3,5 | 14 | + | + | + | - | tr | | |
| | 6. | 1.15 | 3,5 | 14 | + | + | + | - | tr | | |
| | 7. | 22.45 | 3,5 | 18 | + | + | + | + | 3,5 | - | - |
| | 8. | 0.15 | 3,5 | 22 | + | + | + | - | 6,5 | + | + |
| | | 21.30 | 6,5 | 22 | + | + | + | - (SSC?) | | | |
| | 10. | 15.30 | 9 | 40 | - | - | - | + | tr | | |
| | | 21.15 | 6,5 | 45 | - | + | + | + | tr | | |
| | 15. | 2.00 | 7 | 30 | + | + | + | - | tr | | |
| | | 16.45 | 11 | 65 | - | - | - | + | | | |
| | | 18.45 | >18 | 95 | + | + | + | + | tr | | |
| | | 23.15 | 18 | 65 | + | + | + | - | | | |
| | 16. | 2.15 | 12,5 | 60 | + | + | + | - | | | |
| | 18. | 23.15 | 3,5 | 50 | 0 | + | + | 0 | tr | | |
| | 20. | 20.00 | 5,5 | 45 | + | + | + | - | tr | | |
| | 22. | 00.30 | 3,5 | 10 | + | + | + | 0 | 2,5 | + | + |
| | 23. | 18.30 | 6,5 | 22 | - | - | - | + | (si?) | | |
| | 24. | 22.45 | 16 | 70 | + | + | + | - | tr | | |
| | 25. | 12.00 | 11 | 40 | - | - | + | - | | | |
| | 26. | 3.45 | 18 | 70 | + | + | + | - | | | |
| | 27. | 1.00 | 9 | 35 | + | + | + | - | | | |
| | | 23.30 | 7 | 30 | + | + | + | + | tr | | |
| 3. | 1. | 1.00 | | | | | | | 2,5 | + | + |
| | 3. | 20.15 | 8 | 40 | - | + | + | + | tr | | |
| | 4. | 19.15 | 6,5 | 30 | + | + | + | + | tr | | |
| | 5. | 2.15 | 2,5 | 14 | + | + | + | - (si?) | tr | | |

| | | <i>Bays</i> | | | | <i>Pt-s</i> | | | | | |
|-------|-------|-----------------|--------------|----------|----|-------------|----|-----|----------|----|----|
| Month | Day | CET (GMT+1h) | Amplitude in | | Ex | Ey | Hx | Hy | E(mV/km) | Ex | Ey |
| | | | E(mV/km) | H(gamma) | | | | | | | |
| 3. | 6. | 21.00 | 2,5 | 10 | + | + | + | - | 2,5 | + | + |
| | | 23.15 | | | | | | | 2,5 | | |
| | 7. | 2.15 | | 14 | + | + | + | - | 2 | + | + |
| | 8. | 3.15 | 9 | 55 | + | + | + | - | 2 | + | + |
| 10. | | 2.00 | 5,5 | 25 | + | - | - | - | tr | | |
| | | 4.00 | 4,5 | 15 | - | - | + | - | | | |
| | | 14.45 | 6,5 | 40 | - | - | - | + | | | |
| | | 17.30 | 7 | 35 | - | - | - | + | tr | | |
| 11. | 11.15 | 5,5 | 18 | + | + | + | - | | | | |
| 12. | | 1.15 | | | | | | | 2 | + | + |
| | | 22.30 | 25 | 70 | + | + | + | - | | | |
| 13. | 18.30 | 16 | 120 | - | + | + | + | 2,5 | - | + | |
| 14. | | 19.30 | 14,5 | 60 | + | + | + | - | tr | | |
| | | 22.15 | 12,5 | 45 | + | + | + | - | | | |
| 15. | 0.45 | 9 | 60 | + | + | + | + | | | | |
| 16. | | 1.00 | 8 | 35 | + | + | + | - | | | |
| | | 21.00 | 4,5 | 30 | - | + | + | + | tr | | |
| | | 22.00 | 3,5 | 25 | - | + | + | + | | | |
| 17. | 0.30 | 7 | 35 | + | + | + | - | 2 | + | - | |
| | | 18.00 | 4,5 | 18 | - | - | - | + | tr | | |
| | | 21.15 | 3,5 | 18 | + | + | + | + | 2 | + | + |
| 18. | 21.15 | 5,5 | 18 | + | + | + | + | 2,5 | + | + | |
| 19. | 0.45 | 3,5 | 10 | + | + | + | - | 2 | + | + | |
| | | 22.30 | 11 | 65 | + | + | + | - | 2 | + | + |
| 20. | 0.15 | 9 | 40 | + | + | + | - | tr | | | |
| 21. | 23.30 | 3 | 7 | + | + | + | 0 | 3 | + | + | |
| 22. | 20.30 | | | | | | | 2,5 | + | + | |
| 24. | 20.30 | 8 | 55 | + | + | + | + | tr | | | |
| 25. | 0.00 | 4,5 | 30 | + | + | + | - | 2 | + | + | |
| | | 22.00 | | | | | | | 2,5 | + | + |
| 26. | 1.15 | 6,5 | 20 | + | - | - | - | 2 | + | + | |
| | | 22.30 | | | | | | | 2,5 | + | + |

| | | <i>Bays</i> | | | <i>Pt-s</i> | | | | | | |
|-------|-----|-----------------|--------------|----------|-------------|----|----|----|----------|----|----|
| Month | Day | CET (GMT+1h) | Amplitude in | | Ex | Ey | Hx | Hy | E(mV/km) | Ex | Ey |
| | | | E(mV/km) | H(gamma) | | | | | | | |
| 3. | 27. | 19.45 | 5.5 | 20 | + | + | + | + | tr | | |
| | 28. | 0.15 | 4.5 | 18 | + | + | + | — | 2,5 | + | + |
| | | 20.45 | | | | | | | 4,5 | — | — |
| | 30. | 3.45 | | | | | | | 2,5 | + | — |
| | | 19.45 | 7 | 25 | — | + | + | + | 2.5 | — | + |
| | | 22.15 | 8 | 40 | — | + | + | + | 2.5 | + | + |
| | 31. | 18.15 | 10 | 60 | — | + | + | + | tr | | |
| | | 20.15 | 11 | 50 | + | + | — | + | | | |
| 4. | 3. | 0.45 | | | | | | | 2.5 | + | — |
| | | 1.45 | 6.5 | 35 | + | + | + | — | 2 | + | — |
| | | 19.15 | 4.5 | 20 | — | + | — | + | tr | | |
| | | 20.30 | 7 | 30 | — | + | + | + | 3.5 | + | + |
| | 4. | 7.15 | | | | | | | 8 (pg) | | |
| | | 17.30 | 7 | 50 | + | — | — | + | tr | | |
| | | 18.45 | 11 | 40 | — | — | — | 0 | | | |
| | | 23.15 | 12,5 | 40 | + | + | + | — | | | |
| | 5. | 0.00 | 4,5 | 22 | + | + | + | — | 2 | + | + |
| | | 17.00 | 6,5 | 30 | — | — | — | + | tr | | |
| | | 20.00 | 9 | 65 | + | + | + | + | | | |
| | | 23.30 | 4,5 | 25 | + | + | + | — | 2,5 | — | + |
| | 7. | 23.00 | 2,5 | 10 | + | + | + | + | 2,5 | + | + |
| | 8. | 0.30 | | | | | | | 2 | + | + |
| | 9. | 13.00 | 16 | 85 | + | + | — | + | | | |
| | | 19.00 | 21,5 | 115 | — | — | — | + | | | |
| | 10. | 19.15 | 9 | 45 | + | + | + | — | | | |
| | | 22.15 | 6,5 | 55 | — | — | + | + | | | |
| | 11. | 20.45 | 8 | 35 | — | + | + | + | 2,5 | + | + |
| | 12. | 19.15 | 4,5 | 30 | + | + | + | + | 2 | — | + |
| | 14. | 0.15 | | | | | | | 2,5 | + | — |
| | | 1.15 | 8 | 28 | + | — | — | — | 2,5 | — | — |
| | | 23.45 | 27 | 145 | + | + | + | + | tr | | |
| | 17. | 23.00 | 6,5 | 22 | + | + | + | + | 2,5 | + | + |
| | | 23.45 | 6,5 | 30 | + | + | + | — | 2,5 | + | + |

| | | <i>Bays</i> | | | | <i>Pt-s</i> | | | | | |
|-------|-------|-----------------|--------------|----------|----|-------------|----|-----|----------|----|----|
| Month | Day | CET (GMT+1h) | Amplitude in | | Ex | Ey | Hx | Hy | E(mV/km) | Ex | Ey |
| | | | E(mV/km) | H(gamma) | | | | | | | |
| 4. | 18. | 23.00 | 4,5 | 35 | — | + | + | + | 2 | — | + |
| | 19. | 12.00 | | | | | | | (pg) | | |
| | 21. | 14.30 | 7 | 18 | + | + | + | — | | | |
| | | 23.30 | 14,5 | 70 | + | + | + | — | tr | | |
| | 22. | 21.00 | 11 | 40 | — | + | + | + | 2,5 | + | + |
| | 23. | 10.30 | 6,5 | 22 | + | + | + | — | (ssc) | | |
| | | 20.15 | 5,5 | 25 | — | + | + | + | 3,6 | + | + |
| | | 21.30 | 11 | 35 | — | + | + | + | 2,5 | + | + |
| | 26. | 15.15 | 4,5 | 13 | + | + | — | + | 2,5 | + | + |
| | 28. | 0.00 | | | | | | | 2,5 | + | + |
| | 29. | 1.45 | 8 | | — | — | | | | | |
| | | 2.30 | 8 | | + | + | | | | | |
| | 5. | 2. | 1.00 | 11 | 55 | + | + | + | — | tr | |
| 3. | | 22.15 | | | | | | | 2,5 | + | + |
| 5. | | 2.00 | | | | | | | 2,5 | + | + |
| | | 21.15 | 7 | 35 | + | + | + | + | | | |
| 6. | | 22.30 | 11 | 60 | + | + | + | + | | | |
| 10. | | 21.00 | 3,5 | 13 | + | — | + | + | 2 | + | + |
| 11. | | 21.30 | | | | | | | 2 | + | + |
| 14. | | 4.00 | | | | | | | 3,5 | + | — |
| | | 23.15 | 5,5 | 35 | + | + | + | — | 3,5 | + | + |
| 17. | | 2.15 | 10 | 45 | + | + | + | — | tr | | |
| | | 19.30 | >13 | 95 | + | + | + | — | | | |
| | | 20.15 | 20 | 105 | + | + | + | — | | | |
| | | 2.15 | >26 | 125 | + | + | + | — | tr | | |
| 18. | 17.45 | 9 | 55 | — | + | + | + | tr | | | |
| | 20.30 | 6,5 | 55 | — | + | + | + | tr | | | |
| | 22.45 | 3,5 | 30 | + | + | + | + | 3,5 | + | + | |
| 20. | 0.45 | 3,5 | 10 | + | + | + | — | 2 | + | + | |
| 22. | 2.15 | 5,5 | 18 | + | + | + | — | 3,5 | + | + | |
| | 1.30 | 5,5 | 45 | + | + | + | — | 3,5 | — | — | |
| 23. | 21.00 | 8 | 30 | — | + | — | + | tr | | | |

| | | <i>Bays</i> | | | <i>Pt-s</i> | | | | | | |
|-------|-----|-----------------|--------------|-----------|-------------|----|----|--------|----------|----|----|
| Month | Day | CET (GMT+1h) | Amplitude in | | Ex | Ey | Hx | Hy | E(mV/km) | Ex | Ey |
| | | | E(mV/km) | H(gamma) | | | | | | | |
| 5. | 25. | 1.15 | | | | | | | 2,5 | + | + |
| | 28. | 0.00 | | | | | | | 2,5 | + | + |
| | | 20.00 | 3,5 | 15 | + | + | + | + | 3,5 | + | + |
| | 29. | 0.45 | 3,5 | 15 | + | + | + | - | 2,5 | - | + |
| | 30. | 1.15 | 8 | 22 | - | - | - | + | | | |
| | | 21.30 | 5,5 | 40 | + | + | + | - | 4,5 | + | + |
| 6. | 2. | 20.45 | 6,5 | 65 | + | + | + | - | | | |
| | 5. | 23.00 | | | | | | | 3,5 | + | + |
| | 7. | 23.00 | | | | | | | 3,5 | + | + |
| | 8. | 0.00 | 4,5 | 12 | + | + | + | - | 4,5 | + | + |
| | | 20.30 | | | | | | | 2 | - | - |
| | | 21.00 | 2,5 | 12 | + | + | + | + | 2,5 | + | + |
| | 9. | 1.00 | | | | | | | 2 | + | + |
| | 12. | 20.15 | | | | | | | 2 | + | + |
| | | 21.30 | | | | | | | 2,5 | + | + |
| | 15. | 21.45 | | | | | | | 4,5 | + | - |
| | | 22.00 | | | | | | | 2,5 | - | + |
| | | 23.00 | 3,5 | 8 | + | + | + | + | 2,5 | + | + |
| | 18. | 22.45 | 3,5 | 15 | + | + | + | - | 3,5 | + | + |
| | 22. | 4.00 | 2,5 | 8 | + | + | + | +(pg?) | 2,5 | + | + |
| | | 16.30 | | | | | | | 3,5 (pg) | | |
| | 23. | 9.45 | 5,5 | 15 | + | + | + | - | | | |
| | | 17.45 | 5,5 | 22 (ssc?) | + | + | + | - | | | |
| | 29. | 0.15 | 4,5 | 15 | + | + | + | - | 2 | + | + |
| | | 18.30 | | | | | | | 2,5 | + | + |
| 7. | 1. | 6.00 | | | | | | | (pg) | | |
| | 2. | 14.30 | 5,5 | 14 | + | + | + | - | | | |
| | 3. | 0.00 | 5,5 | 25 | + | + | + | - | 2 | + | + |
| | 4. | 1.15 | 7 | 30 | + | - | - | - | tr | | |
| | | 22.00 | 3,5 | 20 | - | + | + | - | tr | | |
| | 5. | 19.15 | 3,5 | 16 (si?) | + | + | + | - | tr | | |
| | | 21.15 | 7 | 25 | + | + | + | - | 2,5 | + | + |

| | | <i>Bays</i> | | | <i>Pt-s</i> | | | | | | | |
|-------|-------|-----------------|--------------|----------|-------------|----|----|----|----------|-----|----|---|
| Month | Day | CET (GMT+1h) | Amplitude in | | Ex | Ey | Hx | Hy | E(mV/km) | Ex | Ey | |
| | | | E(mV/km) | H(gamma) | | | | | | | | |
| 7. | 6. | 1.30 | 5.5 | 25 | + | + | + | - | tr | | | |
| | | 19.30 | 7 | 25 (si?) | - | - | - | + | | | | |
| | | 22.00 | | | | | | | 2.5 | + | + | |
| | | 8. | 18.30 | 4.5 | 20 (ssc?) | + | + | + | - | tr | | |
| | | 9. | 2.00 | 7 | 35 | + | + | + | - | tr | | |
| | | 10. | 1.15 | 4.5 | 18 | - | - | - | + | | | |
| | 21.15 | | | | | | | | 3.5 | - | + | |
| | | 11. | 18.15 | 4.5 | 18 | - | - | - | + | | | |
| | | 12. | 11.30 | 3.5 | 12 | + | + | + | - | | | |
| | | 15. | 13.30 | 7 | 25 | + | + | + | - | | | |
| | | 20. | 0.00 | 2 | 10 | + | + | + | 0 | tr | | |
| | 15.15 | | 3.5 | 14 | - | - | - | + | | | | |
| | | 21. | 0.15 | | | | | | | 2 | + | + |
| | | 22. | 21.00 | 4.5 | 15 | + | + | + | - | | | |
| | | 24. | 0.30 | 5.5 | 35 | + | + | + | - | 2 | + | + |
| | 26. | 20.00 | 14.5 | 75 | - | - | - | + | tr | | | |
| 23.45 | | 11 | 50 | - | + | + | + | tr | | | | |
| | 27. | 12.15 | 7 | 30 | + | + | + | - | | | | |
| | 28. | 22.30 | | | | | | | 2 | - | - | |
| | 30. | 0.00 | 9 | 45 | + | + | + | - | tr | | | |
| | 31. | 17.15 | 3.5 | 7 | + | + | + | - | | | | |
| 8. | 1. | 21.00 | 3.5 | 25 | - | + | + | + | 2.5 | + | + | |
| | | 22.00 | | | | | | | 2.5 | + | + | |
| | | 2. | 15.30 | 3.5 | 10 (si?) | + | + | + | - | | | |
| | | 3. | 21.15 | | | | | | 7 | - | + | |
| | | 5. | 1.30 | 7 | 35 | + | + | + | - | 5.5 | + | + |
| | 22.00 | | | | | | | | 2 | + | + | |
| | | 6. | 23.00 | | | | | | 2.5 | + | + | |
| | | 8. | 22.15 | 3.5 | 22 | - | + | + | + | 2.5 | + | + |
| | | 9. | 18.00 | >9 | 28 | - | + | + | + | | | |
| | | 10. | 3.00 | 6.5 | 28 | + | + | + | - | 2 | + | + |

| | | <i>Bays</i> | | | <i>Pt-s</i> | | | | | | |
|-------|-----|-----------------|--------------|----------|-------------|----|----|----|----------|----|----|
| Month | Day | CET (GMT+1h) | Amplitude in | | Ex | Ey | Hx | Hy | E(mV/km) | Ex | Ey |
| | | | E(mV/km) | H(gamma) | | | | | | | |
| 8. | 11. | 0.15 | 5.5 | 22 | + | + | + | + | tr | | |
| | 12. | 13.45 | 7 | 32 | - | - | - | + | | | |
| | 13. | 23.45 | | | | | | | 4.5 | + | + |
| | 14. | 23.15 | | | | | | | 4.5 | + | + |
| | 16. | 4.45 | 6.5 | 35 | + | + | + | - | tr | | |
| | 18. | 16.15 | 11 | 30 | + | + | + | - | | | |
| | | 23.45 | | | | | | | 4.5 | - | + |
| | 19. | 23.00 | | | | | | | 3.5 | + | + |
| | 20. | 23.00 | 2.5 | 12 | + | + | + | + | 2 | + | + |
| | 21. | 20.45 | 4.5 | 15 | + | + | + | - | 2 | + | + |
| | 23. | 1.30 | 9 | 60 | + | + | + | - | tr | | |
| | 26. | 21.15 | 6.5 | 35 | - | + | + | + | 2 | - | + |
| | 27. | 20.30 | | | | | | | 3.5 | + | + |
| | 28. | 16.30 | 5.5 | 30 | - | - | - | + | | | |
| | 29. | 1.45 | 4.5 | 18 | + | + | + | - | 3.5 | + | + |
| | | 22.15 | | | | | | | 3.5 | + | + |
| | 30. | 1.00 | 5.5 | 25 | + | + | + | - | 2.5 | + | + |
| | | 17.30 | 3.5 | 13 | + | + | + | - | | | |
| | | 21.45 | | | | | | | 2.5 | + | + |
| | 31. | 0.00 | 11 | 28 | + | + | + | - | | | |
| | | 2.00 | 5.5 | 50 | + | + | + | - | | | |
| | | 21.00 | 14.5 | 75 | + | + | + | + | tr | | |
| | | 22.00 | 12.5 | 45 | + | + | 0 | + | tr | | |
| 9. | 1. | 1.00 | 9 | 45 | + | + | + | - | | | |
| | 4. | 20.15 | 8 | 20 | + | + | + | - | | | |
| | 5. | 0.15 | 6.5 | 40 | + | + | + | - | tr | | |
| | 7. | 22.30 | 8 | 35 | + | + | + | - | | | |
| | 9. | 14.30 | 6.5 | 25 | + | + | + | - | | | |
| | | 16.45 | 7 | 32 | - | - | - | + | | | |
| | 10. | 23.15 | 3.5 | 9 | + | + | + | - | 2.5 | + | + |
| | 12. | 23.00 | 4.5 | 8 | + | + | + | + | 3.5 | + | + |
| | 13. | 3.00 | 9 | 65 | + | - | + | - | 7 | + | - |
| | | 23.45 | | | | | | | 2.5 | + | + |

| | | <i>Bays</i> | | | | <i>Pt-s</i> | | | | | | | |
|-------|-----|-----------------|--------------|----------|----|-------------|----|----|----------|----|----|----|---|
| Month | Day | CET (GMT+1h) | Amplitude in | | Ex | Ey | Hx | Hy | E(mV/km) | Ex | Ey | | |
| | | | E(mV/km) | H(gamma) | | | | | | | | | |
| 9. | 16. | 1.30 | 4,5 | 12 | + | + | + | - | 2 | + | + | | |
| | | 3.30 | | | | | | | 2,5 | | | + | - |
| | | 23.45 | | | | | | | 7 | | | 40 | + |
| | 18. | 12.00 | 7 | 50 | - | - | - | + | | | | | |
| | | 22.30 | 3,5 | 18 | - | + | + | + | 2 | + | - | | |
| | 20. | 19.45 | 9 | 55 | - | + | + | + | tr | | | | |
| | 21. | 21.00 | 3,5 | 14 | + | + | + | - | 2,5 | + | + | | |
| | | 24. | 20.45 | | | | | | 3,5 | + | + | | |
| | | 21.15 | 8 | 45 | - | + | + | + | | | | | |
| | 26. | 22.45 | >18 | 100 | + | + | + | + | tr | | | | |
| | 27. | 18.15 | 5,5 | 60 | + | + | + | + | tr | | | | |
| | 28. | 20.15 | | | | | | | 4,5 | - | + | | |
| | 29. | 2.00 | 5,5 | 15 | + | + | + | - | 2,5 | + | + | | |
| | 30. | 18.45 | 12,5 | 55 | + | + | + | - | | | | | |
| 10. | 1. | 15.30 | 9 | 30 | - | - | - | + | | | | | |
| | | 22.30 | 6,5 | 22 | + | + | + | - | tr | | | | |
| | | 23.15 | 8 | 40 | + | + | + | - | tr | | | | |
| | 2. | 18.30 | 6,5 | 35 | - | + | + | + | | | | | |
| | | 23.00 | 7 | 45 | + | + | + | + | tr | | | | |
| | 3. | 2.00 | 9 | 70 | + | + | + | - | | | | | |
| | | 18.15 | 10 | 40 | - | + | + | + | tr | | | | |
| | 4. | 0.30 | 4,5 | 30 | - | + | + | + | tr | | | | |
| | 5. | 2.00 | 4,5 | 35 | + | + | + | - | tr | | | | |
| | 6. | 17.30 | 7 | 60 | + | - | - | - | tr | | | | |
| | 7. | 21.30 | 13,5 | 60 | - | - | + | + | tr | | | | |
| | 8. | 4.00 | 9 | 45 | + | + | + | - | | | | | |
| | 10. | 0.00 | 7 | 35 | + | + | + | - | tr | | | | |
| | 15. | 0.15 | 6,5 | 40 | + | + | + | + | tr | | | | |
| | 16. | 19.15 | 4,5 | 20 | - | + | + | + | tr | | | | |
| | 17. | 22.00 | 2,5 | 10 | + | + | + | - | 2,5 | + | + | | |
| | 21. | 19.15 | 3,5 | 20 | - | + | + | + | 2,5 | + | + | | |
| | | 23.00 | 4,5 | 22 | + | + | + | + | 2 | + | + | | |

| | | <i>Bays</i> | | | | <i>Pt-s</i> | | | | | |
|-------|-------|-----------------|--------------|----------|----|-------------|----|----|----------|----|----|
| Month | Day | CET (GMT+1h) | Amplitude in | | Ex | Ey | Hx | Hy | E(mV/km) | Ex | Ey |
| | | | E(mV/km) | H(gamma) | | | | | | | |
| 10. | 24. | 13.30 | 5.5 | 50 | 0 | - | - | - | | | |
| | 25. | 0.45 | 3.5 | 25 | + | + | + | - | tr | | |
| | 26. | 23.30 | 3.5 | 20 | + | + | + | - | 2.5 | + | + |
| | 27. | 23.00 | | | | | | | 2.5 | + | + |
| | 28. | 20.15 | 7 | 50 | - | - | - | + | | | |
| | 29. | 0.15 | 12.5 | 65 | - | + | + | - | tr | | |
| | | 17.15 | 8 | 40 | + | + | + | + | tr | | |
| | | 20.00 | 11 | 55 | - | + | + | - | tr | | |
| | | 22.00 | 9 | 45 | - | + | + | + | tr | | |
| 11. | 1. | 1.00 | 7 | 22 | + | + | + | - | 2.5 | + | + |
| | 2. | 19.30 | 2.5 | 15 | + | + | + | 0 | 2 | + | + |
| | 4. | 1.15 | 4.5 | 12 | + | + | + | - | 3.5 | + | + |
| | 7. | 0.00 | | | | | | | 2.5 | + | + |
| | 8. | 1.00 | | | | | | | 2.5 | + | + |
| | | 20.00 | 8 | 30 | - | + | + | + | | | |
| | | 23.45 | 4.5 | 22 | + | + | + | - | 2 | + | + |
| | 10. | 2.00 | | | | | | | 2 | + | + |
| | 11. | 20.15 | 8 | 45 | + | + | + | - | 2 | + | + |
| | 12. | 21.00 | 4.5 | 12 | + | + | + | - | 3.5 | + | + |
| | 14. | 23.30 | 3.5 | 10 | + | + | + | - | 2.5 | + | + |
| | 16. | 22.30 | | | | | | | 2.5 | + | + |
| | 18. | 3.00 | 3.5 | 18 | + | - | + | - | 2.5 | + | + |
| | 20. | 18.45 | 3.5 | 18 | - | + | - | + | 3.5 | - | + |
| | | 0.30 | 7 | 45 | - | + | + | + | | | |
| | | 21.45 | 14.5 | 85 | + | + | + | - | | | |
| | 23. | 19.00 | 11 | 85 | - | - | - | + | tr | | |
| | | 22.00 | 9 | 65 | + | + | + | + | tr | | |
| 25. | 4.00 | | | | | | | | (pg) | | |
| | 23.00 | 8 | 32 | + | + | + | + | | | | |
| 26. | 19.15 | 10 | 32 | - | + | + | + | 2 | - | + | |
| 27. | 21.00 | 3.5 | 14 | - | + | + | + | | | | |
| 28. | 20.15 | 5.5 | 32 | - | + | + | + | 2 | - | + | |

| | | <i>Bays</i> | | | <i>Pt-s</i> | | | | | | |
|-------|-----|-----------------|--------------|----------|-------------|----|----|----|----------|----|----|
| Month | Day | CET (GMT+1h) | Amplitude in | | Ex | Ey | Hx | Hy | E(mV/km) | Ex | Ey |
| | | | E(mV/km) | H(gamma) | | | | | | | |
| 11. | 29. | 19.45 | 4,5 | 28 | - | + | + | + | tr | | |
| | 30. | 1.15 | 3.5 | 12 | + | + | + | - | tr | | |
| | | 22.15 | 2.5 | 18 | - | + | + | + | 1 | + | + |
| 12. | 1. | 23.15 | 4.5 | 10 | + | + | + | - | | | |
| | 2. | 16.00 | 4.5 | 22 | - | - | - | + | | | |
| | 3. | 18.30 | 12.5 | 60 | - | - | - | + | tr | | |
| | | 20.00 | 12.5 | 50 | + | + | + | - | tr | | |
| | 4. | 2.00 | 3.5 | 13 | + | + | + | - | 2.5 | + | + |
| | | 22.00 | 6.5 | 25 | + | + | + | + | 2.5 | + | + |
| | 6. | 21.15 | 3.5 | 8 | + | - | + | + | tr | | |
| | 8. | 1.45 | 3.5 | 14 | + | + | + | - | 2 | + | + |
| | | 13.45 | | | | | | | 3.5 | + | + |
| 12. | 12. | 23.00 | 9 | 35 | - | + | + | + | 2.5 | - | + |
| | 13. | 19.45 | 5.5 | 30 | - | - | + | + | | | |
| | | 22.30 | 10 | 35 | + | + | + | + | | | |
| | 16. | 23.15 | 8 | 40 | - | + | + | + | tr | | |
| | 17. | 2.00 | 12.5 | 55 | + | + | + | + | tr | | |
| | 21. | 20.15 | 7 | 60 | - | + | - | + | | | |
| | 23. | 20.00 | 12 | 45 | - | + | + | - | tr | | |
| | 24. | 20.45 | 3,5 | 14 | - | + | + | + | 2 | - | - |
| | 25. | | | | | | | | 2 | + | + |
| | 26. | 0.00 | 3,5 | 30 | + | + | + | + | 3,5 | + | + |
| | 28. | 22.30 | 3,5 | 8 | - | - | + | + | 2 | - | - |
| | 29. | 2.00 | 3,5 | 12 | - | + | + | + | 2 | + | + |
| | 30. | 0.15 | 10 | 45 | - | + | + | + | tr | | |
| | | 21.00 | 5.5 | 25 | - | + | + | + | 2 | - | + |
| | 31. | 19.15 | 5,5 | 16 | - | + | + | + | tr | | |
| | | 23.30 | 7 | 28 | - | + | + | + | tr | | |

Further pt-traces (earth currents)

| Month | Day | CET | Month | Day | CET | Month | Day | CET |
|-------|-----|-------|-------|-----|-------|-------|-----|-------|
| 1. | 1. | 19.30 | 3. | 2. | 14.45 | 3. | | 19.15 |
| | | 20.00 | | | 20.15 | | | 20.30 |
| | 4. | 23.45 | | 3. | 2.15 | 29. | | 1.30 |
| | 5. | 1.30 | | 4. | 1.00 | | | 2.30 |
| | 8. | 18.45 | | 6. | 2.00 | | | 13.00 |
| | 9. | 14.45 | | | 20.15 | 30. | | 0.30 |
| | | 18.30 | | 7. | 17.00 | | | 23.15 |
| | 11. | 23.45 | | | 19.45 | 31. | | 0.00 |
| | 12. | 1.15 | | | 20.00 | | | 1.00 |
| | 13. | 0.15 | | | 20.15 | | | 3.45 |
| | | 1.15 | | | 20.45 | 4. | 1. | 2.45 |
| | 16. | 23.45 | | | 22.15 | | 3. | 20.15 |
| | 17. | 20.45 | | 8. | 14.45 | | 4. | 0.15 |
| | 18. | 0.30 | | 9. | 0.15 | | 6. | 17.30 |
| | | 0.45 | | 11. | 4.45 | | 11. | 22.30 |
| | 21. | 22.30 | | 13. | 21.30 | | | 23.15 |
| | | 23.30 | | 14. | 0.00 | | 12. | 23.30 |
| | 22. | 0.00 | | 16. | 20.30 | | 17. | 0.30 |
| | 28. | 2.45 | | | 20.45 | | | 1.30 |
| | 30. | 23.45 | | 17. | 21.45 | | 18. | 22.30 |
| 2. | 2. | 22.00 | | | 22.15 | | 19. | 0.15 |
| | 3. | 0.30 | | 19. | 21.15 | | | 1.30 |
| | 5. | 1.30 | | 20. | 22.30 | | | 2.15 |
| | 8. | 23.30 | | 21. | 20.45 | | | 22.15 |
| | | 23.45 | | | 22.15 | | | 22.30 |
| | 10. | 2.15 | | 22. | 0.30 | | | 22.45 |
| | 11. | 0.00 | | | 16.00 | | | 23.30 |
| | 12. | 21.00 | | | 20.00 | | 22. | 21.45 |
| | 13. | 1.15 | | | 21.00 | | 25. | 17.15 |
| | 14. | 20.15 | | 23. | 20.15 | | 26. | 19.00 |
| | 16. | 21.00 | | 24. | 21.45 | | | 19.30 |
| | 17. | 21.15 | | 25. | 19.45 | | | 20.00 |
| | 18. | 0.00 | | | 21.30 | | | 22.45 |
| | 19. | 23.15 | | | 23.15 | | | 23.15 |
| | 21. | 21.15 | | 26. | 23.30 | | 27. | 0.30 |
| | | 21.45 | | 27. | 2.15 | | | 21.00 |
| | | 23.30 | | | 3.45 | | 5. | 2.00 |
| | 22. | 0.00 | | | 10.15 | | 2. | 20.30 |
| | 23. | 2.45 | | | 23.30 | | | 21.15 |
| | 24. | 0.45 | | 28. | 0.30 | | | 23.30 |
| | | 22.15 | | | 17.15 | | 3. | 1.00 |
| | 25. | 21.30 | | | 18.00 | | | 15.45 |
| 3. | 1. | 2.00 | | | 18.45 | | | 21.45 |

| Month | Day | CET | Month | Day | CET | Month | Day | CET |
|-------|-----|-------|-------|-----|-------|-------|-----|-------|
| 5. | 4. | 0.30 | 6. | 3. | 22.30 | 7. | 9. | 0.45 |
| | | 1.30 | | | 23.15 | | | 1.30 |
| | | 2.15 | | | 23.30 | | | 21.00 |
| | | 2.30 | | 5. | 18.30 | | 10. | 20.45 |
| | | 2.45 | | | 22.45 | | 11. | 19.30 |
| | 5. | 2.30 | | | 23.30 | | 14. | 20.15 |
| | | 20.30 | | | 23.45 | | 15. | 19.15 |
| | 6. | 1.30 | | 8. | 0.45 | | | 22.30 |
| | | 1.45 | | 9. | 20.45 | | 16. | 1.30 |
| | | 3.00 | | 11. | 16.15 | | 17. | 0.30 |
| | | 3.15 | | | 17.15 | | | 1.30 |
| | | 19.45 | | | 22.15 | | | 2.30 |
| | | 20.30 | | 13. | 3.45 | | | 18.15 |
| | 8. | 23.30 | | | 8.15 | | 18. | 4.15 |
| | | 0.30 | | 15. | 20.45 | | 19. | 23.45 |
| | 9. | 0.45 | | 16. | 10.45 | | 20. | 16.45 |
| | | 3.30 | | 18. | 23.15 | | | 17.00 |
| | | 20.00 | | 19. | 0.30 | | | 17.30 |
| | 10. | 2.30 | | 20. | 0.15 | | | 17.45 |
| | | 2.45 | | | 20.15 | | 21. | 1.45 |
| | | 3.30 | | 21. | 12.00 | | | 20.45 |
| | | 20.15 | | | 22.30 | | 28. | 20.45 |
| | 11. | 1.30 | | | 23.00 | | 29. | 21.45 |
| | | 2.15 | | | 23.30 | | 30. | 20.00 |
| | | 19.30 | | 22. | 2.30 | 8. | 2. | 21.30 |
| | | 21.00 | | 24. | 21.15 | | 3. | 1.45 |
| | 14. | 21.15 | | 26. | 20.45 | | 4. | 20.00 |
| | 16. | 19.30 | | | 23.00 | | | 20.30 |
| | 21. | 1.45 | | 27. | 1.15 | | 5. | 22.45 |
| | 22. | 3.45 | | 28. | 23.00 | | 8. | 21.45 |
| | 24. | 16.30 | | | 23.30 | | 9. | 2.15 |
| | | 19.45 | | 7. | 1.45 | | | 21.45 |
| | | 20.15 | | | 22.00 | | 10. | 16.30 |
| | 25. | 3.45 | | 2. | 21.30 | | | 17.15 |
| | 26. | 0.45 | | | 22.00 | | 11. | 2.00 |
| | | 1.00 | | 3. | 21.15 | | | 22.15 |
| | | 4.15 | | 5. | 1.30 | | | 23.15 |
| | | 16.30 | | | 21.30 | | | 23.30 |
| | | 16.45 | | 6. | 21.30 | | 12. | 2.45 |
| | | 22.30 | | 7. | 22.45 | | 13. | 0.30 |
| | | 23.00 | | | 23.15 | | | 1.15 |
| | 29. | 1.30 | | 8. | 13.15 | | | 23.45 |
| | | 19.00 | | | 19.15 | | | |
| | 30. | 22.00 | | | 22.45 | | | |
| | | | | | 23.15 | | | |

| Month | Day | CET | Month | Day | CET | Month | Day | CET |
|-------|-------|-------|-------|-----|-------|-------|-----|-------|
| 8. | 15. | 0.30 | 9. | 12. | 2.15 | 10. | 14. | 1.30 |
| | | 1.30 | | | 2.45 | | 15. | 23.15 |
| | | 4.15 | | | 23.30 | | 16. | 1.15 |
| | | 22.30 | | 13. | 22.45 | | | 21.00 |
| | | 23.00 | | | 23.45 | | 17. | 21.30 |
| | | 23.00 | | 14. | 11.00 | | | 22.45 |
| 16. | 17.30 | | | | 18.30 | | 18. | 18.45 |
| | 2.45 | | | | 19.15 | | 19. | 1.45 |
| | 3.15 | | | | 23.00 | | | 20.30 |
| | 16.15 | | | | 23.15 | | 20. | 18.45 |
| 19. | 1.30 | | | | 23.30 | | | 19.00 |
| | 2.00 | | | 15. | 2.15 | | 24. | 19.30 |
| | 2.15 | | | 16. | 1.00 | | 26. | 22.45 |
| 20. | 0.00 | | | 17. | 20.30 | | 27. | 3.15 |
| | 0.30 | | | 18. | 22.15 | | | 20.00 |
| 22. | 23.15 | | | 19. | 22.00 | | | 22.00 |
| | 23.30 | | | 21. | 20.00 | | | 23.00 |
| 23. | 20.30 | | | 22. | 2.30 | | 30. | 20.30 |
| 24. | 4.45 | | | | 21.15 | | | 21.00 |
| | 18.30 | | | | 22.00 | | 31. | 19.00 |
| 26. | 0.15 | | | 25. | 21.45 | | | 23.30 |
| | 1.45 | | | 27. | 21.30 | 11. | 1. | 18.45 |
| | 19.45 | | | | 22.15 | | 2. | 15.30 |
| 27. | 2.30 | | | 28. | 22.45 | | 4. | 22.45 |
| | 20.45 | | | 29. | 0.30 | | 8. | 21.30 |
| | 23.00 | | | | 18.45 | | 10. | 1.30 |
| | 23.30 | | 10. | 4. | 0.15 | | | 7.15 |
| | 23.45 | | | | 1.30 | | 14. | 0.30 |
| | 1.45 | | | | 2.00 | | 15. | 0.00 |
| 29. | 1.45 | | | | 22.45 | | | 0.30 |
| 30. | 20.15 | | | 5. | 1.45 | | | 1.00 |
| 9. | 1. | 17.30 | | | 20.30 | | 16. | 23.15 |
| | | 18.45 | | | 21.45 | | 18. | 0.30 |
| | 2. | 21.45 | | | 20.30 | | | 2.15 |
| | 3. | 2.45 | | 8. | 21.15 | 12. | 5. | 23.30 |
| | | 3.30 | | | 21.15 | | 7. | 16.15 |
| | | 20.00 | | 9. | 21.45 | | 8. | 1.30 |
| | | 21.00 | | | 20.30 | | | 2.30 |
| | 4. | 21.45 | | 10. | 21.45 | | 9. | 22.30 |
| | 5. | 20.45 | | | 22.15 | | | 23.45 |
| | 7. | 22.00 | | | 22.45 | | 11. | 1.30 |
| 10. | 0.30 | | | | 23.30 | | 21. | 23.00 |
| | 18.45 | | | | 23.15 | | 25. | 2.15 |
| 11. | 3.00 | | | | 23.45 | | 26. | 21.00 |
| | 3.30 | | | 11. | 23.45 | | | 21.45 |
| 12. | 1.30 | | | 12. | 23.00 | | | 22.45 |
| | 2.00 | | | | 0.15 | | | |

| Month | Day | (GMT+1 h) | Amplitude in | | Ex | Ey | Hx | Hy |
|-------|-----|-----------|--------------|----------|----|----|----|-------|
| | | | E(mV/km) | H(gamma) | | | | |
| 8. | 7. | 11.15 | 3.5 | 8 | — | — | — | + (?) |
| | 8. | 16.45 | 2.5 | 7 | — | — | — | + |
| | 11. | 7.30 | 6.5 | 9 | — | — | — | + |
| | 21. | 10.30 | 3.5 | 8 | — | — | — | + |
| | 23. | 4.30 | 5.5 | 8,5 | + | + | — | + |
| | | 5.45 | 9 | 10 | — | — | — | + |
| | 29. | 13.15 | 8 | 22 | + | + | + | — |
| | 31. | 11.30 | 11 | 18 | — | — | — | + |
| 9. | 9. | 12.30 | 6.5 | 14 | + | + | + | — |
| | 13. | 6.30 | 9 | 18 | + | + | — | — (?) |
| | 14. | 16.45 | 3.5 | 10 | + | + | + | — |
| | 17. | 10.45 | 6.5 | 11 | + | + | + | — |
| 10. | 11. | 13.15 | 6.5 | 14 | + | + | + | — |
| | 15. | 11.30 | 8 | 14 | + | + | + | — |
| | 28. | 22.30 | 5.5 | 11 | — | — | — | + |

„Needles”

| Month | Day | CET (GMT+1 h) | Amplitude in E(mV/km) | Ex | Ey |
|-------|-----|------------------|--------------------------|----|----|
| 1. | 25. | 18.30 | 5,5 | + | — |
| 3. | 11. | 3.45 | 2,5 | — | — |
| 4. | 19. | 19.30 | 2,5 | — | — |
| | 22. | 4.00 | 2 | + | — |
| | 29. | 10.15 | 5,5 | + | + |
| 5. | 8. | 5.45 | 5,5 | — | — |
| | 14. | 14.30 | 5,5 | — | — |
| | 30. | 8.45 | 2,5 | + | + |
| | | 12.00 | 7 | — | — |
| | | 13.00 | 7 | — | — |
| 6. | 7. | 18.15 | 2 | 0 | + |
| | 10. | 18.15 | 2 | + | — |
| | 14. | 15.30 | 2,5 | + | + |
| | 28. | 9.45 | 2,5 | — | — |
| 7. | 14. | 1.45 | 7 | + | — |
| | 29. | 17.30 | 11 | + | + |
| | 30. | 10.30 | 2 | — | — |
| 8. | 22. | 8.45 | 2,5 | — | — |
| | 23. | 10.30 | 2,5 | 0 | — |
| 10. | 20. | 19.15 | 3,5 | — | + |
| 11. | 19. | 8.30 | 2,5 | — | — |
| | 22. | 5.45 | 2,5 | + | + |
| | 25. | 7.15 | 7 | — | — |
| 12. | 9. | 12.00 | 15,5 | + | + |

v.

Results of rapid-run records (for explanations see pp. 6 and 64)

JAN-FEBR 1971

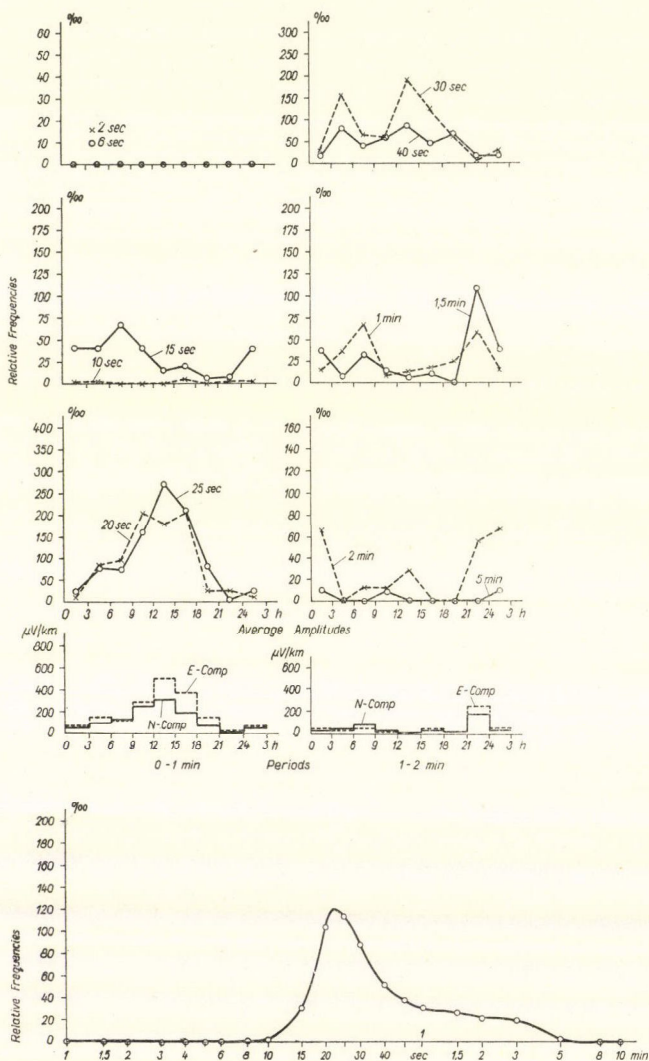


Fig. 1a.

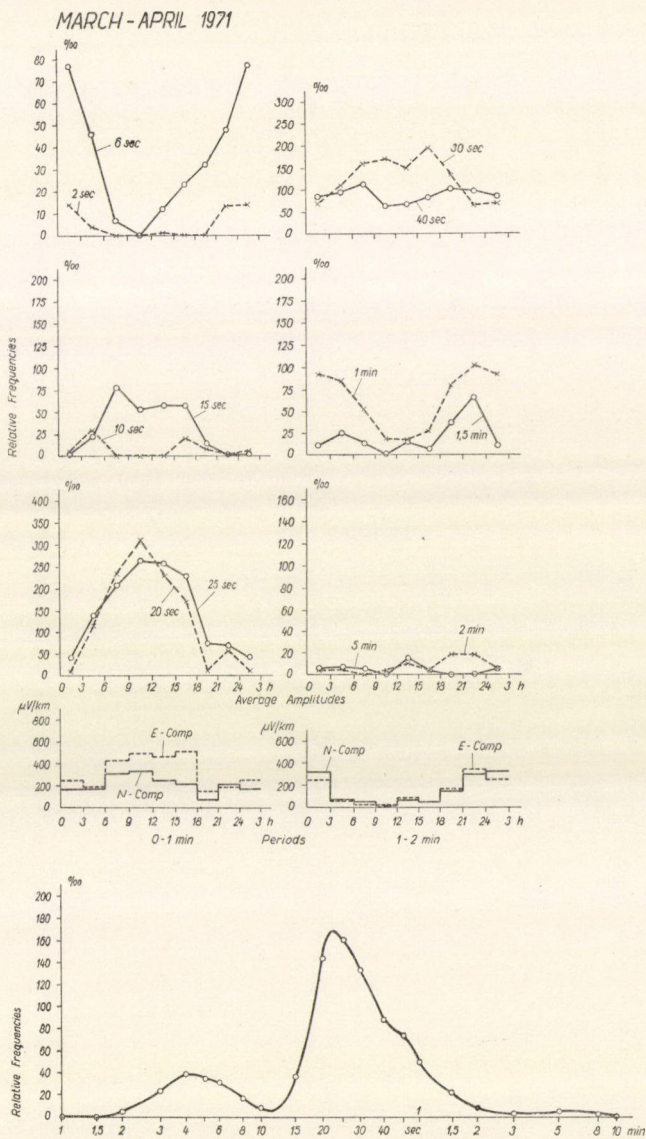


Fig. 1b.

MAY-JUNE 1971

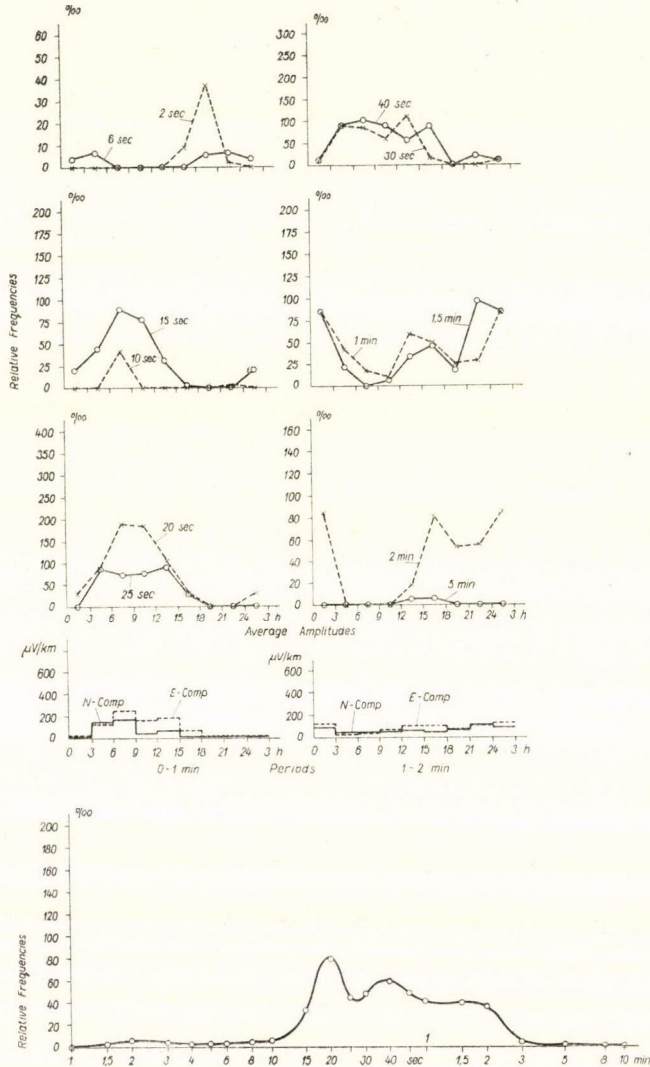


Fig. 1c.

JULY-AUG 1971

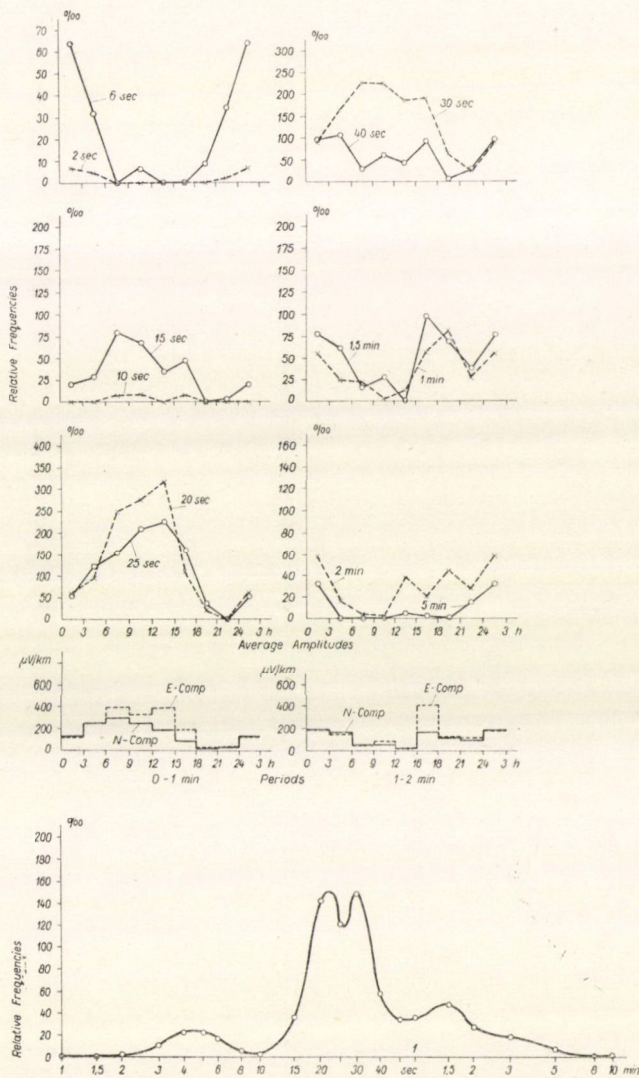


Fig. 1d.

SEPT-OCT 1971

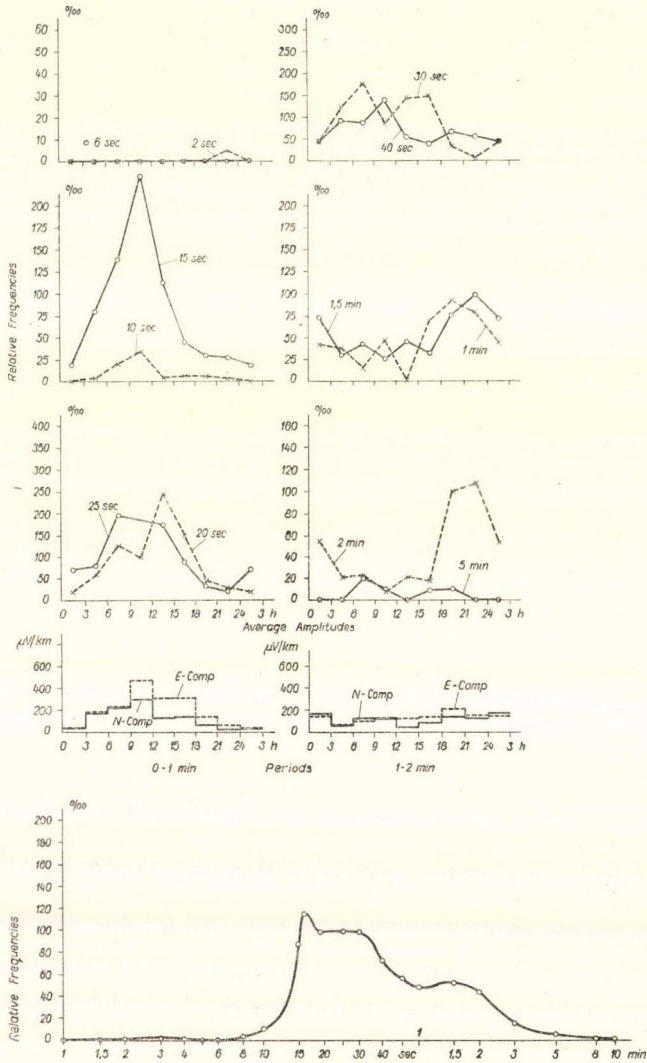


Fig. 1e.

NOV-DEC 1971

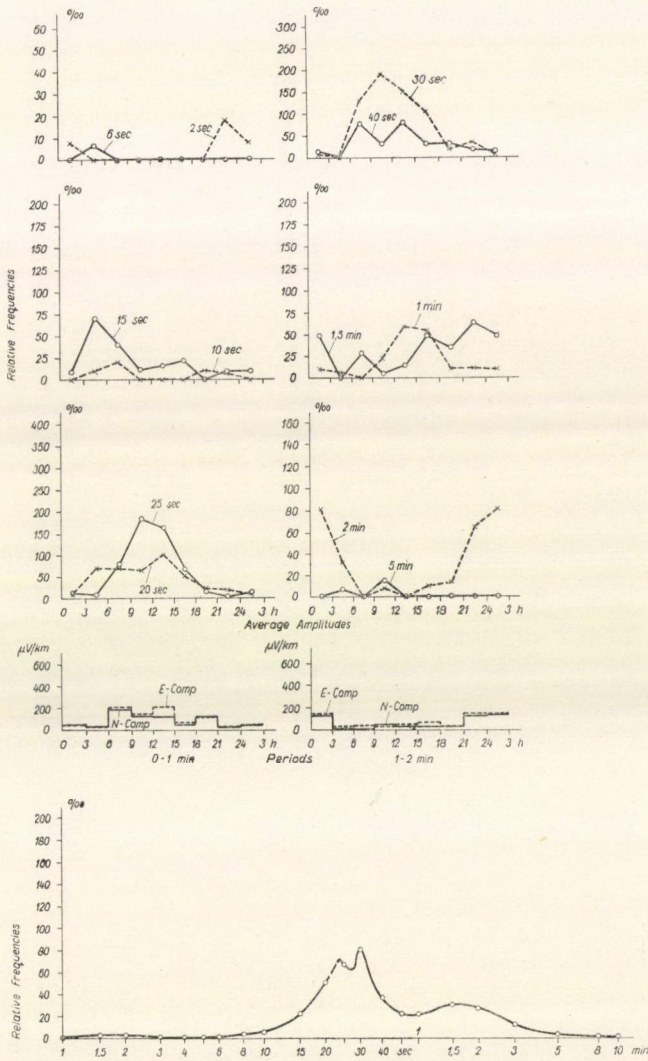


Fig. 1f.

YEARLY AVERAGE 1971

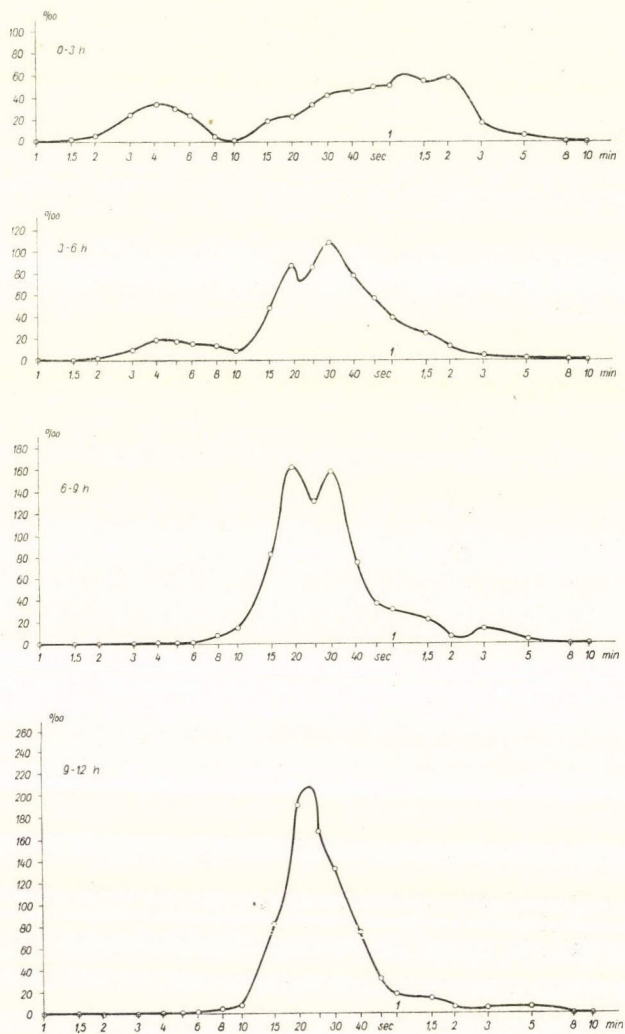


Fig. 1g.

YEARLY AVERAGE 1971

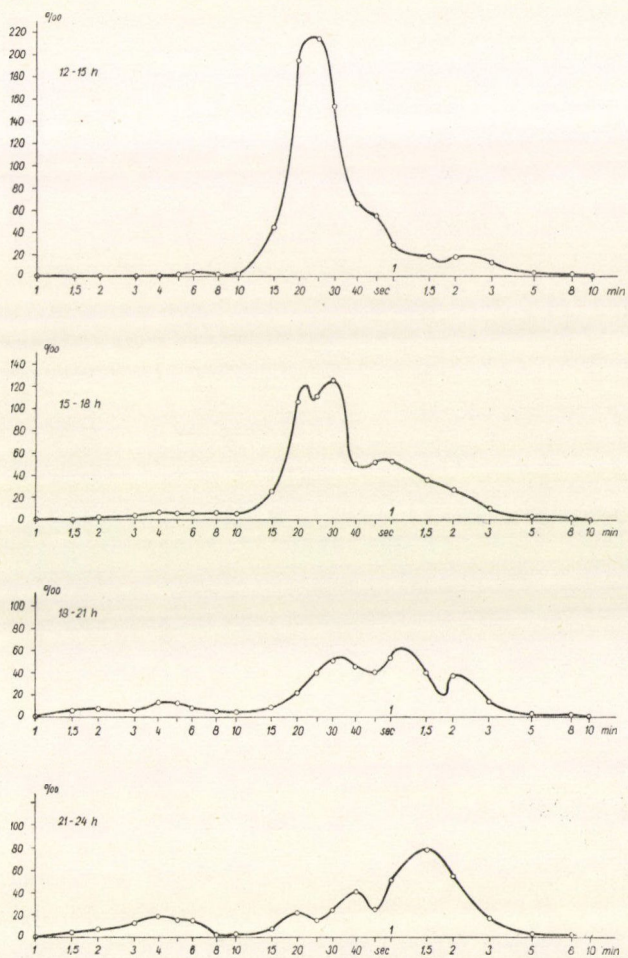


Fig. 19.

YEARLY MEAN 1971

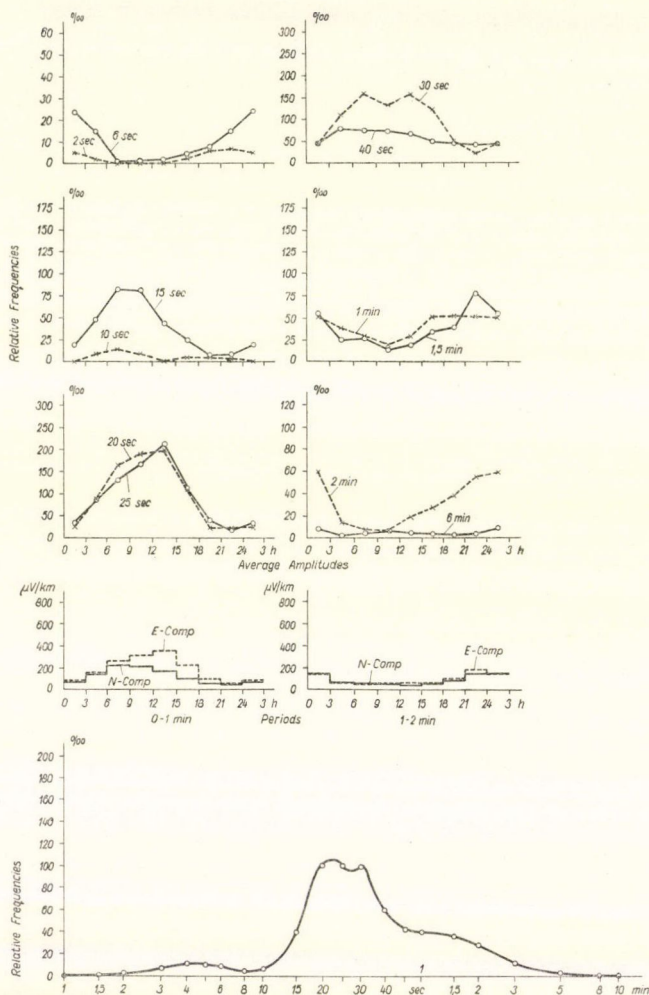


Fig. 1h.

Results of rapid-run records for the year 1971. The daily variations of the relative average occurrence frequencies of some selected pulsation periods are represented on the top of the figures 1a—1f in two-month intervals, and of figure 1h in the whole year; at the middle of these figures the daily variations of the amplitudes in the bands 0—1 and 1—2 min are drawn, at the bottom the approximate spectra for the same intervals. For the whole year, the spectra for each 3 hour interval of the day is given at fig. 1g.

VI.

Micropulsation indices for the years 1966—1971.

Activity indices
(P1 to P12)

| Day | January | February | March |
|-----|----------------|----------------|----------------|
| 1. | 111445411411 | 111343541431 | 215433442121 |
| 2. | 313554312441 | 511343422441 | 111432343341 |
| 3. | 111144542111 | 311353121431 | 514445111342 |
| 4. | +21155322421 | 113555111311 | 531454232311 |
| 5. | 111121454221 | 435445314231 | 511121154411 |
| 6. | 114333212321 | 111135322111 | 531134331311 |
| 7. | 212444413521 | 111121253311 | 511323211541 |
| 8. | 112355311411 | 111113553221 | 511124441121 |
| 9. | 111454422211 | 112222431531 | 511122244151 |
| 10. | 111455311111 | 112522323531 | 511452414121 |
| 11. | 112235534211 G | 312343125332 | 211312345221 |
| 12. | 112124553521 G | 111123315441 | 211344532112 |
| 13. | 312235531421 G | 111144522331 | 111133234133 |
| 14. | 511453431351 | 111111354311 | 155421232121 |
| 15. | 111355331351 | 313224544442 G | 511344343111 G |
| 16. | 111113423131 | 111354334531 G | 511245331211 G |
| 17. | 111122314451 | 411342353421 G | 52134444211 G |
| 18. | 111122411553 | 111233422411 | 111144141111 |
| 19. | 111144211131 | 511352113551 | 113455211211 |
| 20. | 512443314523 | | 111354322112 |
| 21. | 412553312123 | 111123352111 | 111123531113 |
| 22. | 325523423125 | 111454322311 | 552432153112 |
| 23. | 111245512211 | 511554211121 | 523232322132 G |
| 24. | 112255512111 | 112555231111 | 545121521111 |
| 25. | 311145531311 | 311454141211 | 525531411255 |
| 26. | 311345512312 | 511134352111 | 155543411155 |
| 27. | 111123454111 | 521144332231 | 132453431113 |
| 28. | 111531544213 | 121233152221 | 125555231451 |
| 29. | 111455114111 | | 115445511111 G |
| 30. | 412442221112 | | 111243441111 |
| 31. | 111111433351 | | 112221451321 |

the micropulsations

Year 1966

| April | May | June |
|----------------|----------------|----------------|
| 113533352141 | 111133244312 | |
| 115511251111 | 112332425421 | |
| 113344542111 | 111111554321 | |
| 112543243111 | 111124235311 | |
| 111543512111 | 111111155221 | |
| 131454411121 | 112212552331 | |
| 111145511211 | 111111155511 | |
| 113434253111 | 111122135511 | |
| 111344153111 | 113521243321 | |
| 111122242531 | 111211323411 | |
| 111112552111 | 112533223441 | 111211124551 |
| 111122244531 G | 111453113431 | 111122444352 |
| 541321134551 G | 111122341112 | 111123344351 |
| 113321115211 G | 111111131111 | 311111314551 G |
| 111124521111 | 111111112121 | 421111245251 G |
| 111134541351 | 111111124551 | 433222143552 G |
| 111144322421 | 551243113541 G | 112211153521 |
| 111111154121 | 321124435421 G | 111122532351 |
| 111111154232 | 131113552431 G | 111552111455 |
| 111132225321 | | 111111442541 |
| 111112335411 | | 111111452551 |
| 113552213411 | | 114311344341 |
| 111454313122 | | 113421112555 |
| 111111155411 | | 114511125455 |
| 111111245411 | | 114543224541 |
| 111111155311 | 355432223355 G | 111543235511 |
| 111111452221 | 111111251155 | |
| 111122543242 | 111111253332 | |
| 111133533421 | 111111154421 | |
| 111431125411 | 111111214351 | |
| | 115532143351 | |

Activity indices
(P1 to P12)

| Day | July | August | September |
|-----|----------------|----------------|----------------|
| 1. | | | |
| 2. | | 111111135451 | |
| 3. | 111123422551 | 111424214331 | |
| 4. | 113533433351 | 111334215511 | |
| 5. | 113555411211 | 111322153431 | |
| 6. | 111133255441 | 111111235521 | |
| 7. | 111111145551 | 111112435421 | |
| 8. | 113521125551 | 111422234541 | |
| 9. | 115524442114 | 111321145421 | |
| 10. | 125433442111 | 112211245512 | |
| 11. | 111135551111 | 112521355411 | |
| 12. | 553123543112 G | 111444234113 | |
| 13. | 511111255541 G | 113522144211 | 111112344551 G |
| 14. | 512221145541 G | 111424253111 | 522234432421 G |
| 15. | 111221145444 | | 414542224111 G |
| 16. | 111555211422 | 112211345331 G | |
| 17. | 115524214311 | 511111253321 G | |
| 18. | 111334344431 | 531111125353 G | |
| 19. | 111123253311 | | |
| 20. | 111534333331 | | |
| 21. | 111445514211 | | |
| 22. | 111111145521 | | 121234313111 G |
| 23. | 111113553231 | | |
| 24. | 111111553331 | | |
| 25. | | | |
| 26. | 331112455432 G | | |
| 27. | 334422112452 G | | |
| 28. | 432112455552 G | | |
| 29. | 121134325322 G | | |
| 30. | 111453222451 G | | |
| 31. | | | |

the micropulsations

Year 1966

| October | November | December |
|----------------|----------------|--------------|
| | | 11155511311 |
| | | 111133115441 |
| | 111133552111 | 115545522455 |
| | 111335515511 | |
| | 511422555411 | |
| | 111111425531 | 111112543421 |
| | 111134543221 | 111112455441 |
| | 111135344422 | 111133334441 |
| | 111455221541 | 511125313441 |
| 511111455221 G | 111155315531 | |
| 511243232341 G | 111145312451 | |
| 511234443441 G | 111143141551 | 11133235455 |
| | 111124545411 | 444433134455 |
| 521122322134 G | 111112433241 G | 331554133453 |
| | 111113221231 G | 111145444112 |
| | 512531113431 G | 113322255521 |
| | 111111135555 | 111455222341 |
| | 111155335521 | 111135542321 |
| | 111554112411 | 111145514431 |
| | 111455243111 | 112335335421 |
| | 111435533111 | 111555211121 |
| | 111124543251 | 111155321321 |
| | 111234125451 | 111213455111 |
| | 111311342352 | 111555312111 |
| | 111121155131 | 113555433231 |
| | 111111234551 | 115555112212 |
| | 111554123322 | 111334353131 |
| | 411545224441 | 111125543321 |
| | 111543115433 | 111122355111 |

Activity indices
(P1 to P12)

| Day | January | February | March |
|-----|----------------|----------------|----------------|
| 1. | 111434543242 | 111125521111 | 111133551311 |
| 2. | | 111112334551 | 111145411541 |
| 3. | | 111113452351 | 111145134433 |
| 4. | | 111145413552 | 111155112341 |
| 5. | | 413145334241 | |
| 6. | | 111122544541 | |
| 7. | | 25543444455 | |
| 8. | | 445533212552 | |
| 9. | | 11111455321 | |
| 10. | | 111123551221 | |
| 11. | 111534554231 | 511345521241 | |
| 12. | 111111345441 | 111145542431 | 111111125551 |
| 13. | 122444422254 | | 111332134541 |
| 14. | 441312124551 | 511113343121 | 121155214431 G |
| 15. | 111113544331 | 111111133511 G | 111111134521 G |
| 16. | 511122443451 | 554311144355 G | 311111245431 G |
| 17. | 511124243421 G | 111443453111 G | 111145533441 |
| 18. | 111433423531 G | 111111551131 | 111344115541 |
| 19. | 311112353331 G | 111333252121 | 231554114211 |
| 20. | 411134144521 | 111244343311 | 111255232112 |
| 21. | 111111455541 | 111145215231 | 111333435321 |
| 22. | 511135143231 | 511355312242 | 111111245341 |
| 23. | 111355514441 | 511354232111 | 111112423241 |
| 24. | 111112345441 | 111345512111 | 111145442231 |
| 25. | 111123442451 | 115454111211 | 111134124552 |
| 26. | 111112544142 | 111155521111 | 111113244251 |
| 27. | 111132542441 | 111123552111 | 113344122541 |
| 28. | 111145314231 | 111122552121 | 111134553331 |
| 29. | 111145414541 | | 111113534341 |
| 30. | 111111155241 | | 111122533521 |
| 31. | | | 111112542341 |

the micropulsations

Year 1967

| April | May | June |
|----------------|----------------|----------------|
| 111122244541 | 113122115533 | |
| 115124344311 | 155533113541 | 111123135531 |
| 111135511331 | 155312223553 | 122111453341 |
| 115155123443 | 112511155331 | 111431115411 |
| 111155222141 | 111155224411 | |
| 111154114441 | | 543451111235 G |
| 111345315441 | | |
| 111125115321 | | 111532411111 |
| 111114345521 | 331355321111 G | |
| 111122245541 | 121355333531 G | 121521234211 |
| 111113554531 G | 452355123311 G | 111333125531 |
| 341122245421 G | 112454213321 | 111135541311 |
| 331111255541 G | 112442125511 | 223443345521 G |
| 111353113551 | 221521115311 | 554353224531 G |
| 111223243242 | 111111154431 | 542353233411 G |
| 111442123551 | 113422135531 | 111144142541 |
| 121155123211 | 121455112421 | 111444531331 |
| 111143115551 | 111143213311 | |
| 111455114311 | 111133122541 | 111144344111 |
| | 111111155251 | 111522124521 |
| | 111133253541 | |
| 111133125551 | 111532432141 | 111212235451 |
| 155542213541 | 112344115251 | 111111115551 |
| | 114443224433 | 111111125351 |
| | 145432212434 | |
| 111111155111 | | 111435541341 |
| | 135532222245 | 115522125321 |
| | 455411122351 | 113553212511 |
| | | 113521145222 |

Activity indices
 (P1 to P12)

| Day | July | August | September |
|-----|----------------|----------------|----------------|
| 1. | 113511145211 | 111111243554 | 113524523241 |
| 2. | 111411155231 | 111111142131 | 111445421321 |
| 3. | 111111134331 | 111121144551 | 111144252421 |
| 4. | 111311232221 | 111111144551 | 111122453321 |
| 5. | 111133135521 | 111443324211 | 111111254121 |
| 6. | 221111125421 | 111155453331 | 111111135551 |
| 7. | 111532143311 | 111322244241 | 111122154431 |
| 8. | 111112445211 | 113422235421 | 111422133541 |
| 9. | 111111125541 | 111421211111 | 111155324331 |
| 10. | 111111155351 | 111131135341 | 111334235311 |
| 11. | 224544111341 | 123522311313 | 111122345251 |
| 12. | | 112411155311 | |
| 13. | 111111215531 | 111122455221 | |
| 14. | 111532223511 | 111144442211 | |
| 15. | 111111155111 | 121343245421 G | |
| 16. | | 343433445542 G | |
| 17. | | 434552112424 G | |
| 18. | 112542211233 G | 115553332211 | |
| 19. | 121113555541 G | 122544531221 | 342223445444 G |
| 20. | 111134534542 G | 111432433311 | 245532124454 G |
| 21. | 111132314541 | 111135555412 G | 554433244242 G |
| 22. | 111111145451 | 111144254211 | |
| 23. | 221322444321 | 111113442521 | |
| 24. | 115531433121 | 331135324432 G | 111124453311 |
| 25. | 132132253211 | 111131242531 | 111135541221 |
| 26. | 112454133311 | 111553225221 | 131122252541 |
| 27. | 111121254451 | 231355225111 | 111111154411 |
| 28. | 133442422152 | 111144452121 | |
| 29. | 115544322441 | 111333253221 | 121555341111 |
| 30. | 131111115451 | 121132254311 | 231124552111 |
| 31. | 111111132241 | 111122415311 | |

the micropulsations

Year 1967

| October | November | December |
|----------------|----------------|----------------|
| 111122553111 | 111122155451 | 114533135211 |
| 111123152111 | 112211145421 | 221134144121 |
| | 112555133211 | 111123253211 |
| | 111355221411 | 111154153221 |
| 111144352211 | 111135444111 | 111541252111 |
| | 111135444211 | 111554321111 |
| 111112145441 | 111155531111 | 113555211111 |
| 111454252111 | 115554231121 | 113555311111 |
| 125555223211 | 111355212211 | |
| 113543252112 | 111144453111 | |
| 111355411111 | 113554341111 | |
| 111355441111 | 111554211111 | 111111134231 G |
| 111155533441 | | 311134542211 G |
| 112455431111 | 111454224211 G | 111121455411 G |
| 111455431121 | 311125553211 G | 511135425321 |
| 111155433411 G | 111455322213 G | 111432233251 |
| 321355325311 G | 111112551221 | 111111434541 |
| 311255422322 G | 111122554211 | 155423124332 |
| 311124555311 G | 111135551121 | 113334452111 |
| | 111122253311 | 114355224231 |
| 111112454221 | 111122254451 | 135145232232 |
| 111122255315 | 111444313321 | 112355431111 |
| 111234434322 | 111455241331 | 111145541111 |
| 111123443411 | 112333435411 | 111111153121 |
| 111122155221 | 111111453421 | 111111254111 |
| 111122354341 | 111111155213 | 111111354431 |
| 111111244541 | 111112445431 | 111112442421 |
| 111245233225 | 111111245541 | |
| 115534423355 | 115545241221 | |
| 131323344242 | 112554232311 | |
| 111145442231 | | |

Activity indices
 (P1 to P12)

| Day | January | February | March |
|-----|----------------|----------------|----------------|
| 1. | | 111344132411 | 111443142111 |
| 2. | 115411233141 | 111134115521 | 111144523111 |
| 3. | 111342114511 | 111124144321 | 111434324421 |
| 4. | 111111242431 | 115522115541 | 112233235321 |
| 5. | 111331125411 | 111111144311 | 112531135531 |
| 6. | 215444113421 | 111111135511 | 111333344111 |
| 7. | 111112533121 | 111111235331 | 111312544411 |
| 8. | 111111144311 | 111345112421 | 113321145411 |
| 9. | 111111145211 | 111111135511 | 111111245311 |
| 10. | 111113232411 | 222235123433 | 111355322111 |
| 11. | 113313224411 | 235111135553 | |
| 12. | 111311115553 | 111333114231 | 344444213311 G |
| 13. | | 133354422132 G | 112345313421 G |
| 14. | | 544552111132 G | 554432113434 G |
| 15. | | 145534433143 G | 113553111113 |
| 16. | 533332224442 G | 111344123221 | 111354142111 |
| 17. | 134552111332 G | 111454113121 | 111245531111 |
| 18. | 322355332111 G | 111551112121 | 111354223111 |
| 19. | 111155113211 | | 111554223232 |
| 20. | 111355111441 | | 111324434212 |
| 21. | 111234134211 | 111145431111 | 111321344211 |
| 22. | 111144133311 | 111344421111 | 111323345311 |
| 23. | 111144134121 | 111324441111 | 112331254324 |
| 24. | 111145223311 | 111112541111 | 111453212211 |
| 25. | 111122135511 | 121111352131 | 111223334111 |
| 26. | 111111135554 | 111312442311 | 111123532111 |
| 27. | 111444112422 | 133122234431 | 111145431111 |
| 28. | 111111145411 | 115531111111 | 111155222111 |
| 29. | | | 111112542121 |
| 30. | | | 111343122342 |
| 31. | 111145132111 | | 111555211111 |

the micropulsations

Year 1968.

| April | May | June |
|----------------|----------------|----------------|
| 111135511121 | 111321453112 | 111453231124 |
| 111111254331 | 123552211112 | 111352224122 |
| 111111453221 | 124543222142 | 111542112122 |
| 111123534311 | 111341441321 | 111333144313 |
| 143533224445 | 111121351231 | 111121254321 |
| 125553112155 | 111321341131 | 111111453111 |
| 111554234411 | 114532225555 | 113443221141 |
| 112333342341 | | 115553111232 |
| 111111214341 | 354111252311 | 112553311211 |
| 111123433141 | 133542112132 | |
| 111134332113 | 115541112254 | 355411123241 G |
| 111443321231 | 111354311221 | 15411124433 G |
| 112554111141 | 112552211144 | 155232341111 G |
| 112245212131 | 131454443112 G | 125522333244 |
| 111554212455 | 143455443433 G | 113532231112 |
| 342553232212 G | 143355114211 G | 124532222111 |
| 131133113111 G | 111122253131 | 113532221131 |
| 121122422211 G | 112552112122 | 111122431132 |
| 111111355441 | 114551124121 | 111111551111 |
| 111111155111 | 111554211121 | 111132251111 |
| | 114345122122 | 111122531111 |
| 111122323441 | 255311442111 | 111322531141 |
| 121154211331 | 111145421111 | 11132333121 |
| | 123212454311 | 111111252231 |
| 111213521121 | 111123334111 | 111111252111 |
| | 111111155111 | |
| 131551111111 | 111211254122 | |
| 111122533121 | 111121454341 | 121321332431 |
| 111123521113 | 122353221221 | 111343224221 |
| | 111353232421 | 121111245321 |
| | 111432333331 | |

Activity indices
(P1 to P12)

| Day | July | August | September |
|-----|----------------|----------------|----------------|
| 1. | 111422443111 | 133422455542 | 111455323322 |
| 2. | 111333521122 | 113323355551 | 112555445421 |
| 3. | 112442212333 | 125454445455 | 115554212313 |
| 4. | 111233341111 | 112445552231 | 122555324332 |
| 5. | 111122442111 | 121543355452 | 111544434323 |
| 6. | 113333332331 | 115544212212 | 122444443434 |
| 7. | 111531242121 | 122555433322 | 114553234445 |
| 8. | 111111154222 | 111544443431 | 332331554422 |
| 9. | 111111343322 | 112455435321 | 115332442345 |
| 10. | 112542114455 | 111123555431 | 112444434421 |
| 11. | 111531222121 | 111234544111 | 113455313421 |
| 12. | 111111552111 | 111344444432 | 113455322222 |
| 13. | 122111234343 | 132355521215 G | 113543222124 |
| 14. | | 111122353211 | 113445512113 |
| 15. | 133333244332 | 543355345311 G | 111323554422 |
| 16. | 123235555313 G | 115555411112 | 111355511133 |
| 17. | 121112555311 G | 115554331121 | 111113552111 G |
| 18. | 143133423311 G | 111555321132 | 111123432211 G |
| 19. | 153234533441 | 115544543112 | 521133112211 G |
| 20. | 112422532311 | 111345432232 | |
| 21. | 233322354443 | 111222555321 | |
| 22. | 114555312222 | 111234345542 | |
| 23. | 122345432222 | 112223455322 | |
| 24. | 112111255542 | 113433335442 | 111134454311 |
| 25. | 111343355454 | 111111355541 | 111111255441 |
| 26. | 223455424441 | 111122554342 | 111124355431 |
| 27. | 111445433212 | 111112555531 | 111222355551 |
| 28. | 121311554422 | 112222455541 | 111312355552 |
| 29. | 111135544322 | 111211455441 | 221234455441 |
| 30. | 112234543441 | 111111455551 | 111234454321 |
| 31. | 122222434541 | 122333345552 | |

the micropulsations

Year 1968.

| October | November | December |
|----------------|----------------|----------------|
| 115544432333 | 155533224555 | 122231511531 |
| 112222444491 | 222433554455 | 113455412253 |
| 112433431213 | 255543413555 | 142455213455 |
| 111211455541 | 132345232344 | 243555412455 |
| 111111255521 | 111211552331 | 115555211153 |
| 111442135552 | 111123552345 | 112345521432 |
| 112531245551 | 142345411353 | 112222554413 |
| 111244554331 | 111233323453 | 324423422554 |
| 111112454221 | 112445424342 | 113322435544 |
| 112334542121 | 111111534542 | 135325513443 |
| 114445531244 | 111111244452 | 112245512435 |
| 555554111355 | 411122442211 G | 111345511553 |
| 252334344245 | 111344234431 G | 111235541552 |
| 351235531141 | 111355443411 G | 111112551412 |
| 111255453211 G | 111242214552 | 111332324554 |
| 233332321221 G | 114423322555 | 111323312354 |
| 321355432213 G | 111211112555 | 111112323212 G |
| 331145512441 | 111112234542 | |
| 531355311421 | 111111442453 | 111225511551 |
| 211335521125 | 135421112555 | 111435552231 |
| 111111553341 | 111111113555 | |
| 111111134451 | 111122241551 | 111555511244 |
| 111122135451 | 112325512322 | 111455521233 |
| 211145114555 | 111232212455 | |
| 111455323552 | 111445212355 | |
| 115333214554 | 111345225541 | |
| 331455213542 | 111323515552 | 111321111355 |
| 212334322453 | 111124534544 | 111125523551 |
| 155531111555 | 111245323451 | 111335534452 |
| 111555211145 | 111111451451 | 111134511355 |
| 555411115555 | | |

Activity indices
(P1 to P12)

| Day | January | February | March |
|-----|----------------|----------------|----------------|
| 1. | | 111112524541 | 143112345212 |
| 2. | 111111134311 | 154115525441 | 111113455111 |
| 3. | 111123441241 | 255323532344 | 111111455531 |
| 4. | 111111131353 | 113432132445 | 241111135551 |
| 5. | 111111455541 | 232432255222 | 111453111254 |
| 6. | 111111155551 | 212335532311 | 231135522531 |
| 7. | 113312244551 | 111224534421 | 351235225511 |
| 8. | 111235521111 | 511234335411 | 431125533331 |
| 9. | 111112455311 | 111113554111 | 111134344321 |
| 10. | 111112453311 | 111124534311 | 111155322111 |
| 11. | 111113451251 | 155311112454 G | 151133334531 |
| 12. | 111155314521 | 321111121121 G | 154212334111 |
| 13. | 111111355111 | 112234433111 G | 111113552111 |
| 14. | 111354214521 G | 113211455111 | 121355311111 |
| 15. | 112452113211 G | 111354121311 | 221235523111 |
| 16. | 112245534111 G | 112354342111 | 123235333412 |
| 17. | 111445423111 | 111111355211 | 155524314341 |
| 18. | 111245523111 | 111111454421 | 131145421111 G |
| 19. | 111433552211 | 111234432332 | 142135532113 G |
| 20. | 111245433111 | 112355111231 | 154322112442 G |
| 21. | 111113355511 | 211135542111 | 143135533111 |
| 22. | 111212355411 | 111112535521 | 251115544311 |
| 23. | 111223233411 | 311255311552 | 155334333211 |
| 24. | 111232245331 | 111255511231 | 555312125451 |
| 25. | 115523233211 | 111112334541 | 124322115543 |
| 26. | 113345422211 | 113224322353 | 141235512212 |
| 27. | 111125535411 | 145323232233 | 132225411211 |
| 28. | 111114554111 | 135335422421 | 132135411111 |
| 29. | 111111454411 | | 133355111542 |
| 30. | 112223532331 | | 151115522311 |
| 31. | 111113334551 | | 152135454111 |

the micropulsations
Year 1969.

| April | May | June |
|----------------|----------------|----------------|
| 124135521111 | 121112543111 | 111145212321 |
| 154352111111 | 134433214331 | 111213225551 |
| 151134313112 | 111234432113 | 111112333541 |
| 151114544211 | 131254213211 | 111133313531 |
| 151114523111 | 142324524211 | 111243322531 |
| 152143443111 | 132224421111 | 111143224541 |
| 151223224311 | 131232134311 | 133531113511 |
| 131125423111 | 132354114551 | 115323213531 |
| 152123124212 | 141353112411 | 111342115511 |
| 111255212531 | 133355111111 | 122444111213 |
| 122353211211 | 111134332531 | 121442112244 |
| 133145411112 | 111155112411 | 155324422422 |
| 155444113112 | 143245123354 G | 122235312521 |
| 151454122111 | 353353222122 G | 122543113125 |
| 124443323222 G | 453221135553 G | 112353112441 |
| 112454211111 G | 111224332322 | 111112311111 |
| 132355311143 G | 145323522331 | 243255322211 G |
| 131144211111 | 155521113312 | 111115543331 G |
| 131134325211 | 111552113312 | 111113432341 G |
| 152143414411 | 132333112432 | 111121132541 |
| 142332314432 | 144223335422 | 121111144441 |
| 154532113231 | 121134331123 | 111111155431 |
| 121554211111 | 112555311113 | 111211114552 |
| 131553111121 | 112335422313 | 121211113221 |
| 133454111321 | 132112442211 | 111211113151 |
| 132124513421 | 111133224522 | 111134213321 |
| 142245212414 | 111123442241 | 111111332311 |
| 135322211255 | 111121114551 | 111112232111 |
| 141134223454 | 111112225551 | 111111111121 |
| 142344123343 | 111431115531 | 111111444411 |
| | 111334112541 | |

Activity indices
(P1 to P12)

| Day | July | August | September |
|-----|----------------|----------------|----------------|
| 1. | 122322112313 | | 111111354311 |
| 2. | 111111124212 | | |
| 3. | 111111135551 | | |
| 4. | 111111245541 | | |
| 5. | 111111122453 | | 111155511131 |
| 6. | 111111121153 | | 121343112311 |
| 7. | 111233111155 | | 141233335311 |
| 8. | 111112331142 | | 553223334312 |
| 9. | 111234321321 | | 312232213231 G |
| 10. | | 111211111155 | 111121233211 G |
| 11. | 111111124441 | 114323212321 | 131133431211 G |
| 12. | 111333113411 | 111113533321 | 111111553311 |
| 13. | 115542212112 | 111323134411 | 111111455421 |
| 14. | 111111344151 | 111111125541 | 341111135552 |
| 15. | 111112555411 G | | 451123341341 |
| 16. | 131221114331 G | 111231124411 | 111112444332 |
| 17. | 111113553211 G | 111521115111 | 125343114412 |
| 18. | 113321114513 | 111423325511 | 114455332113 |
| 19. | 111111145551 | 122235533311 | 111255424312 |
| 20. | 111111125553 | 111112435231 | 121125534411 |
| 21. | 112311112451 | 111133224551 | 111112555511 |
| 22. | | 112543233421 | 111111544351 |
| 23. | 111112135421 | 111532124421 | 451134354121 |
| 24. | 111111333311 | 331112455552 G | 111355411121 |
| 25. | 111111433351 | 533322145555 G | 111235523411 |
| 26. | 113311112555 | 542112553542 G | 111112553321 |
| 27. | 155331114241 | 111112255411 | 121114443541 |
| 28. | | 111112335112 | 355323114355 |
| 29. | | 111123422323 | 455122223134 |
| 30. | | 111111233551 | 254312435332 |
| 31. | | | |

the micropulsations

Year 1969.

| October | November | December |
|----------------|----------------|----------------|
| 122335533111 | 111111245451 | 111211355321 |
| 153223433131 | 111123112452 | 111111155111 |
| 121112553112 | 112135314311 | 111111552111 |
| 111111554111 | 111111455321 | 411221114553 |
| 111114552111 | 111115453111 | 112452113244 |
| 111134534111 | 111111255521 | 211225521111 |
| 111112453111 | 111112223552 | 111112433411 |
| 111113554311 | 112112125551 | 111113542211 |
| 211111555211 | 124345211254 | |
| 444354212125 | 131335433312 | |
| 111235554113 | 112333443113 | |
| 111114522311 | 123222553111 | |
| 111113432121 | 111123432331 | 111111132541 |
| 411123442111 G | 111111154321 | 111131352251 |
| 111111454221 G | 111111155351 | 511123421211 |
| 511111112331 G | 111111252352 | 113343114311 G |
| 321242211531 | 111111232114 | 112113334411 G |
| 111553112212 | 111113521421 G | 111114323211 G |
| 111245134451 | 111125321311 G | 111155111131 |
| 221155412511 | 111125313311 G | 111135511211 |
| 121453222341 | 111111132453 | |
| 111114443341 | 111224215452 | |
| 111113554312 | 111323222551 | 111223124551 |
| 222213542122 | 111112323551 | 111223222111 |
| 111115511132 | 111133231341 | 111124511312 |
| 111113354352 | 111212523441 | 211223333311 |
| 111112555441 | 111323325445 | 111111551121 |
| 111124523531 | 112112454342 | 111111155312 |
| 111114452311 | 121215533311 | 311111153111 |
| 111111155241 | 132215435432 | 111211153351 |
| 111112232551 | | 111111354211 |

Activity indices
(P1 to P12)

| Day | January | February | March |
|-----|----------------|----------------|----------------|
| 1. | 511133113343 | 111111234433 | 113332211241 |
| 2. | 335513312231 | 312343111231 | 231224221112 |
| 3. | 111122534112 | 311235212131 | 131115323211 |
| 4. | 111111454422 | 311124323452 | 231124434211 |
| 5. | 111122235422 | 213111452121 | 255332114222 |
| 6. | 111114511111 | 111111155311 | 351144112132 |
| 7. | 111125111521 | 111111155551 | 351123432133 |
| 8. | 511133222441 | 111111113552 | 555322123321 |
| 9. | 112123134411 | 111112344331 G | 541133421152 |
| 10. | 111111155421 | 111114211132 G | 111113531111 G |
| 11. | 111111135512 | 111125311111 G | 111111111121 G |
| 12. | 111123422211 | 111114411332 G | 122222431122 G |
| 13. | 111211135541 G | 111124111145 | 111123323312 |
| 14. | 111114553211 G | 112113111153 | 211123531231 |
| 15. | 411123445542 G | 111111533452 | 221113533342 |
| 16. | 133111112151 | 111113331351 | 111111234151 |
| 17. | 151113422321 | 231113321451 | 121233111152 |
| 18. | | 111125322111 | 121125311312 |
| 19. | | 111124454211 | |
| 20. | | 111111552241 | 111111123541 |
| 21. | | 111112233431 | 111111243421 |
| 22. | 111113234331 | 111111254252 | 111112542152 |
| 23. | 111124532221 | 111111112143 | 111115511343 |
| 24. | 123111123554 | 422214112155 | 111112312152 |
| 25. | 111111155531 | 111222114442 | 111113111132 |
| 26. | 111111135551 | 111111112552 | 112112111155 |
| 27. | 111111132552 | 111111112452 | 145322112155 |
| 28. | 411113123341 | 441125322311 | 152333125311 |
| 29. | 221333112453 | | 151135113122 |
| 30. | 311123111252 | | 141234124111 |
| 31. | 111112544311 | | 145323212155 |

the micropulsations

Year 1970.

| April | May | June |
|----------------|----------------|----------------|
| 11111113555 | 122354111111 | 134323114551 |
| 111114553114 | 111345112111 | 124255212111 |
| 111322112224 | 232144321111 | 151113521151 |
| 131235321511 | 114243111121 | 141111543321 |
| 115531111135 | 113235111431 | 131111453422 |
| 113323124142 | 131111114553 | 111112135122 |
| 111125532112 | 112123135431 | 121121112455 |
| 131123424312 | 111121113551 | 155353112121 |
| 111334131154 | 111111353531 | 131223112441 |
| 121122111255 | 111111145421 | 111112325421 |
| 111113111151 | 111111145551 | 131112212521 |
| 121134131151 | 353411113451 G | 131112453531 |
| 131123411321 | 242234542311 G | 122232123222 |
| 231122343211 G | 142443123221 G | 141112124322 |
| 142112433431 G | 132134122311 | 141334212121 |
| 352235214413 G | 121222312441 | 111124312331 |
| 151115522111 | 111352112122 | 445421113441 G |
| 131235412111 | 131333311111 | 554332125322 G |
| 151221113232 | 122334111421 | 151213323253 |
| 134323111142 | 131332113552 | 153211135541 |
| 153211114422 | 132132122541 | 155311111251 |
| 153132111113 | 131123113221 | 132323224111 |
| 141332113211 | 121112124331 | 111111132121 |
| 142421111321 | 131322211231 | 132112111351 |
| 151422111141 | 151112125521 | 122111113551 |
| 141232111321 | 121112343131 | 133211125551 |
| 141112352321 | 253321113453 | 143421122212 |
| 131122212421 | 151311113511 | 142111145541 |
| 131111134551 | 111125112113 | 121111352511 |
| 132341112311 | 131133112321 | 111122322111 |
| | 111124323111 | |

Activity indices
(P1 to P12)

| Day | July | August | September |
|-----|----------------|----------------|----------------|
| 1. | 122232111242 | 121322135511 | 132531111131 |
| 2. | 111331113131 | 131232111113 | 132531122111 |
| 3. | 133221322331 | 111342111151 | 231332232111 |
| 4. | 253235221112 | 121122222452 | 131552111111 |
| 5. | 134442112111 | 111111244441 | 121112335311 |
| 6. | 125421111332 | 131332311352 | 111232233121 |
| 7. | 111111125552 | 245511112331 | 122224324311 |
| 8. | 152111114551 | 123511114132 | 111334211211 |
| 9. | 155211211142 | 111332223112 | 131325211111 |
| 10. | 133521114231 | 111234421112 | 131111333111 |
| 11. | 132522222111 | 121222323112 | 111111121134 |
| 12. | 155532112113 | 141221354111 | 311224432114 |
| 13. | 111353121111 | 131123533111 | 155331124533 |
| 14. | 111242323421 | 121113523211 | 353322322113 G |
| 15. | 131222554331 G | 131121112421 | 531254443112 G |
| 16. | 331222443411 G | 131243221221 | 321125542111 G |
| 17. | 141211112322 | 555521322554 | 531144222111 G |
| 18. | 131111231452 | 552352243211 G | |
| 19. | 121111145551 | 531333221111 G | 441145114111 |
| 20. | 133112435511 | 111233222211 G | 231245222111 |
| 21. | 145442113121 | 111111223141 | 251135223111 |
| 22. | 122453212111 | 121121111451 | 131112455111 |
| 23. | 141552112112 | 312212212311 | 131113353111 |
| 24. | 153331112411 | 111112245551 | 131123424321 |
| 25. | 155211222155 | 111111113552 | 221213322341 |
| 26. | 153211332351 | 142311135421 | 112124435411 |
| 27. | 132112355122 | 151223322111 | 351134124123 |
| 28. | 131123532121 | 111342111222 | 331345212111 |
| 29. | 255211124554 | 111213325311 | 111354211311 |
| 30. | 131122231152 | 121213313411 | 113223212151 |
| 31. | 152111124452 | 131331114311 | |

the micropulsations

Year 1970.

| October | November | December |
|----------------|----------------|----------------|
| 131143113511 | 111111355121 | 111111133341 |
| 141453114211 | 111113222144 | 111111322151 |
| 141354113111 | 122112112551 | 111124421431 |
| 441325532141 | 122112432511 | 111323433311 |
| 111235514111 | 111123213241 | 112222213452 |
| 211113534311 | 132323212551 | |
| 111112542311 | 455311222351 | |
| 111111223541 | 111113531132 | |
| 111111221351 | 111113533212 | 111125552111 |
| 121211112351 | 111125413412 | 111113333532 |
| 152212114451 | 122235322111 | 111111235422 |
| 332233223211 G | 121213532111 | 111111212351 |
| 212353121221 G | 111112442551 | 111123422332 |
| 122112555211 G | 112225553211 | 345411114554 G |
| 111111155311 G | 111111532211 | 253111135532 G |
| 132123221332 G | 122333343222 | 111111131211 G |
| 153211114455 | 112132223211 G | 111111322211 G |
| 252232113352 | 134123344433 G | 111111132322 G |
| 221122212331 | 154322112222 G | 111233112352 |
| 112111144421 | 111121111111 G | 111122114455 |
| 111111225221 | 155211112452 | 111111421341 |
| 143111125551 | 121222113452 | 111112112552 |
| 151112223253 | 124112111151 | 111125411121 |
| 131223422122 | 112431113133 | 111112122351 |
| 111122335111 | 112553113111 | 111111232441 |
| 111122124341 | 111123523322 | 111111332251 |
| 111133323421 | 111223223321 | 111211115543 |
| 121323114342 | 111123233531 | 311333222332 |
| 241245113211 | 111111253214 | 114512254111 |
| 131125211122 | 111111444531 | 111245321111 |
| 111113422121 | | 111135211111 |

Activity indices
(P1 to P12)

| Day | January | February | March |
|-----|----------------|----------------|----------------|
| 1. | 111145111541 | 113444411124 | 111114321435 |
| 2. | 111254212315 | 111111354113 | 111111551432 |
| 3. | 121345531114 | 111235422211 | 112343324412 |
| 4. | 113355431113 | 111121252232 | 131321244343 |
| 5. | 111155521223 | 111134211444 | 211124441212 |
| 6. | 111122444431 | 111112413254 | 111111443543 |
| 7. | 111111243541 | 111134323521 | 111111124532 |
| 8. | 111111145521 | 111255334313 | 211133112354 |
| 9. | 111122245342 | 113542112211 G | 111352112232 |
| 10. | 111122431352 | 112124522331 G | 212432213445 |
| 11. | 111143212521 G | 111122232211 G | 111133212535 |
| 12. | 111111354311 G | 111343113424 | 141234211255 |
| 13. | 111342112131 G | 111112541112 | 255521211145 |
| 14. | 111111111151 G | 221153222345 | 422541122122 |
| 15. | 111111125554 | 234455212211 | 443334543133 |
| 16. | 121144311332 | 411454432313 | 321355434211 G |
| 17. | 112333322341 | 112523433325 | 332322233111 G |
| 18. | 114134311534 | 111224342315 | 211245255111 G |
| 19. | 111135432113 | 112135432243 | 551331233245 |
| 20. | 111352112245 | 111115543334 | 432134312245 |
| 21. | 111132333233 | 111111221453 | 111112421441 |
| 22. | 112234231113 | 111112341322 | 111111454341 |
| 23. | 111121113452 | 422142123525 | 111421111455 |
| 24. | 111144341532 | 512235112245 | 521453112335 |
| 25. | 121111423423 | 555442113225 | 221245323335 |
| 26. | 111122531115 | 332133323235 | 141433213434 |
| 27. | 151353211445 | 111135422225 | 311322224342 |
| 28. | 254421123252 | 111142311135 | 111311345521 |
| 29. | 141442122354 | | 111111144331 |
| 30. | 122552111115 | | 211112332352 |
| 31. | 112454311215 | | 452531124223 |

the micropulsations

Year 1971.

| April | May | June |
|----------------|----------------|----------------|
| 111235432213 | 221332212455 | 335555334242 |
| 124425532235 | 235143112421 | 155554223322 |
| 323421255412 | 131352423313 | 245555322245 |
| 545532221355 | 551143241115 | 422555442145 |
| 115533242125 | 152454333112 | 112322455533 |
| 145444551115 | 355454222132 | 112223554312 |
| 244543542333 | 353552331125 | 111112555432 |
| 153422454543 | 135355431111 | 242312455532 |
| 545531333524 | 254422352121 | 111323555541 |
| 155554421133 | 542112325421 G | 124332123455 |
| 255434441133 | 232111455311 G | 112111125555 |
| 131123554211 | 111322345211 G | 111312454532 |
| 321122554211 G | 111111211551 G | 122111345553 |
| 553432234432 G | 151321122555 | 123111134542 |
| 453453122313 G | 252331113344 | 322221113421 G |
| 555433332111 | 124453111215 | 112211134441 G |
| 332554533225 | 355421121235 | 312541111121 G |
| 235554441115 | 551441112131 | 411121125332 |
| 235531455323 | 112554542215 | 211111451132 |
| 125412332235 | 111455543422 | 121111132354 |
| 252432112555 | 133554213355 | 111111233444 |
| 255433233421 | 212214552542 | 211111132453 |
| 225543342231 | 313555434214 | 112211221255 |
| 112235424522 | 125555533111 | 331111121555 |
| 111123443522 | 125545445424 | 232111125545 |
| 241332244551 | 132432454232 | 215443233225 |
| 125433444551 | 122225542311 | 111111254134 |
| 125541124445 | 111123555552 | 211311122455 |
| 125542121345 | 122455245533 | 355542114225 |
| 225545421155 | 155543324445 | 122134341125 |
| | 111335555211 | |

Activity indices
(P1 to P12)

| Day | July | August | September |
|-----|----------------|----------------|----------------|
| 1. | 113452132315 | 111324344254 | 111224415312 |
| 2. | 152343422225 | 1255211135555 | 111311344411 |
| 3. | 121132333443 | 112324554312 | 111111135551 |
| 4. | 121123433224 | 113543334333 | 121111154232 |
| 5. | 121132433323 | 125555223322 | 325532112132 |
| 6. | 112432123235 | 111125532431 | 111543111242 |
| 7. | 111321321444 | 213224433355 | 211552124213 |
| 8. | 122111242531 | 212321255553 | 113411352111 |
| 9. | 211332113511 | 214544134334 | 111333421222 |
| 10. | 111111255422 | 112554344433 | 113433153111 |
| 11. | 221111222552 | 113545553215 | 114221113552 |
| 12. | 111211222445 | 124444453113 | 112434311322 |
| 13. | 112411111355 | 113234555112 | 132321224553 |
| 14. | 111442112355 | 111111455221 | 424421245532 G |
| 15. | 111434423434 | 111323555531 | 214532245542 G |
| 16. | 111123454451 | 112343335341 | 113433445541 G |
| 17. | 111113555521 | 111344223334 G | 112433445323 |
| 18. | 114542433552 | 433343212443 G | 531324444345 |
| 19. | 312552134322 | 111125525521 G | 212552232112 |
| 20. | 111225415431 G | 111123432342 | 113543443234 |
| 21. | 454331434341 G | 211111114554 | 113325545211 |
| 22. | 351211111221 G | 121231114432 | 111124554211 |
| 23. | 122532331555 | 414441143122 | 111111455312 |
| 24. | 213434512245 | 111123235311 | 221122244545 |
| 25. | 111113552251 | 121134433222 | 553213355445 |
| 26. | 111114552221 | 121321145331 | 432555334211 |
| 27. | 111542253434 | 112222423511 | 551555223125 |
| 28. | 111135534232 | 111422311335 | 112455551113 |
| 29. | 121113555422 | 111411111355 | 111335553213 |
| 30. | 211442235343 | 211343111511 | 523542333235 |
| 31. | 114432235355 | 155411332125 | |

the micropulsations

Year 1971.

| October | November | December | |
|--------------|--------------|--------------|---|
| 33255521224 | 112114435321 | 111155421213 | |
| 112553322114 | 111111254221 | 511154211121 | |
| 211345522113 | 111121232321 | | |
| 413324443331 | 111252212532 | | |
| 111124553112 | 111122312352 | 111121254235 | |
| 113553111335 | 111134331233 | 111111345512 | |
| 211322335552 | 111145111531 | 111111144542 | |
| 321335243535 | | 112224411442 | |
| 215535432132 | 111111155111 | | |
| 113422555212 | 111332124312 | 111132314431 | |
| 111322455422 | | 111332111453 | |
| 111124555313 | | | |
| 212553433125 | 111134542111 | 213111111111 | G |
| 121555234222 | 111111552311 | 111113522111 | G |
| 113335543212 | 112222211421 | 111255421111 | G |
| 113314555211 | 111111222311 | 411124444541 | G |
| 112211355533 | 111111112221 | | G |
| 411112445521 | 121221113551 | | G |
| 111111251331 | 112321114453 | | G |
| 122122411131 | 111424312353 | 111343543222 | |
| 111111112451 | 112431125553 | | |
| 111111114441 | | | |
| 314532213452 | | | |
| 114541124523 | | 312443344521 | |
| 111111555431 | | 111345443441 | |
| 111115555311 | | | |
| 111223444551 | 112445442123 | 111111133352 | |
| 213312113552 | 112345542112 | 111322555323 | |
| 115444314125 | 112323555311 | | |
| 111335553213 | 522214553311 | | |
| 111112455531 | | | |